

DCF national correspondents

Els Torreele, Jørgen Dalskov, Elo Rasmann, Heikki Lehtinen, Camille Dross, Christoph Stransky, Leonie O'Dowd, Didzis Ustups, Jolanta Cesiulienė, Inge Janssen, Irek Wojcik, Emilia Batista, Maria del Pilar Vara del Rio, Anna Hasslow, Matthew Elliott.

ICES ACOM members and observers

Els Torreele, Morten Vinther, Robert Aps, Alain Biseau, Christopher Zimmermann, Gudmundur Thordarson, Didzis Ustups, Nils Hintzen, Jan Horbowy, Fatima Borges, Francisco Velasco, Massimiliano Cardinale, Pieter-Jan Schön, Petur Steingrund, Jesper Boje, Joanne Morgan, Kiersten Curti, Bjarte Bogstad, Ciaran Kelly, Jari Raitaniemi, Linas Lozys, Yuri Kovalev.

Director of The Russian Research Institute of Fisheries and Oceanography

Kirill V. Kolonchin

Our Ref: H.4/ACB/AC/av

21 February 2020

Subject: Data call for selected ICES stocks of Atlantic salmon (*Salmon salar*) in the North Atlantic

Dear Reader,

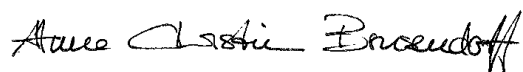
Please find enclosed a document describing the rationale, scope and technical details of the data call to support ICES advice on fishing opportunities for Atlantic salmon in the North Atlantic, excluding the Baltic Sea.

For countries which are also EU members this data call is under Regulations (EU) No 2017/1004 and (EU) No 1380/2013.

For questions about the content of the data call, please contact: Advice@ices.dk.

For questions on data submission, please contact: data.call@ices.dk.

Sincerely,



Anne Christine Brusendorff
General Secretary

CC: Emma Hatfield (Secretary of NASCO); Martha Robertson (Chair of WGNAS); Alan Walker (WGNAS member), DG-MARE(EC); O.A. Bulatov (VNIRO delegate to ICES).



ICES
CIEM

International Council for
the Exploration of the Sea
Conseil International pour
l'Exploration de la Mer

H. C. Andersens Boulevard 44-46,
1553 Copenhagen V, Denmark

+45 33 38 67 00
info@ices.dk | www.ices.dk

Table of Contents

1. Scope of the Data call.....	2
2. Rationale.....	2
3. Legal framework.....	2
4. Deadlines.....	3
5. Data to report.....	3
5.1 Geographic and temporal scope.....	3
5.2 Data types.....	4
5.2.1. Commercial catches.....	4
5.2.2. Recreational fisheries catches and landings.....	5
5.2.3. Information on changes to harvest rates.....	5
5.2.4. Production of farmed and ranched salmon.....	5
6. Data submission.....	5
7. Contact information.....	5
Appendix 1. Glossary.....	6
<u>Annex 1. Specification of data submission.....</u>	6

Data call: Data submission for selected ICES stocks of Atlantic salmon (Salmon salar) in the North Atlantic

1. Scope of the Data call

ICES Member Countries are requested to provide the following for Atlantic salmon (*Salmo salar*) in the North Atlantic, FAO areas 21 and 27 excluding the Baltic Sea:

- data on all 2019 Atlantic salmon catches and landings by country by all fisheries, including commercial fisheries and recreational fisheries (including catches and fish released back alive from recreational catch-and-release sea and river fisheries), and estimates of unreported catch; and
- data on the production of farmed and sea-ranched Atlantic salmon in 2019.

Special terminology and codes used in this data call are described in the glossary in Appendix 1 and Annex 1.

All countries having catch data on Atlantic salmon in these areas should submit data.

2. Rationale

The data requested will be used by ICES, e.g. by the Working Group on North Atlantic Salmon (WGNAS), in the provision of ICES advice to relevant management authorities on fishing opportunities for salmon in the North Atlantic.

3. Legal framework

The legal framework for the data call is as follows:

- Article 15 of the NASCO Convention, with reference to obligations of Parties to provide to the Council the available catch statistics, other statistics, and any other available scientific information that the Council requires for the purposes of the Convention.
- Generically, all the governments and intergovernmental commissions requesting and receiving advice from ICES have signed international agreements under UNCLOS 1995* Fish Stocks agreement article 5 and 6 to incorporate fisheries impacts on other components of marine ecosystems and WSSD 2002 article 30 to implement an ecosystem approach in relation to oceans policy including fisheries. These agreements include an obligation to collect and share data on, inter alia, vessel position (UNCLOS FSA art 5) and to support assessment of the impacts of fisheries on non-target species and the environment (UNCLOS FSA art 6).
- Specifically, ICES has a standing request from the European Commission to advise and inform on the impacts of fisheries on the marine environment. Currently it provides advice on the impact of fishing on birds and mammals. It is required to expand this advice to the impact on benthic habitats.

- For EU Member States this data call is under the DCF Regulation ((EC) No 2017/1004 and Commission Decision 2016/1251/EU), and in particular, Article 17(3) of Regulation (EC) No 2017/1004 which states “..requests made by end-users of scientific data in order to serve as a basis for advice to fisheries management, Member States shall ensure that relevant detailed and aggregated data are updated and made available to the relevant end-users of scientific data within the deadlines set in the request,..”
- For non-EU states with fisheries operating in the North Atlantic, there is a requirement to make fisheries data available to support fisheries management under OSPAR, HELCOM, and UNCLOS.
- This data call also follows the principles of personal data protection as referred to in paragraph (9) of the preamble in Regulation (EU) 2017/1004 and repealing Council Regulation (EC) No 199/2008.

4. Deadlines

ICES requests that the data be delivered by the 23rd March 2020, ahead of the working group on North Atlantic Salmon (WGNAS) meeting.

5. Data to report

5.1 Geographic and temporal scope

The geographical scope reflects all Atlantic salmon catches in the North Atlantic, FAO areas 21 and 27, excluding the Baltic Sea. ICES Atlantic salmon stocks covered by this data call are described in Table 5.1.1.

Table 5.1.1. ICES stocks covered by this data call.

ICES stock code	FAO code	ICES stock description
sal.nac.all	SAL	Salmon (<i>Salmo salar</i>) from North America
sal.neac.all	SAL	Salmon (<i>Salmo salar</i>) in Northeast Atlantic and Arctic Ocean
sal.wgc.all	SAL	Salmon (<i>Salmo salar</i>) in Subarea 14 and NAFO division 1 (east and west of Greenland)

Data are requested to be submitted by NASCO Commission Area (Table 5.1.2 and Figure 5.1.1).

Table 5.1.2. NASCO Commission Areas for data submission.

Commission	Acronym	Description
North American	NAC	The maritime waters within areas of fisheries jurisdiction of coastal States off the east coast of North America.
West Greenland	WGC	The maritime waters within the area of fisheries jurisdiction off the coast of West Greenland west of a line drawn along 44°W longitude

		south to 59°N latitude, thence due east to 42°W longitude and thence due south.
North East Atlantic	NEAC	The maritime waters east of the line referred to in the West Greenland Commission (above).

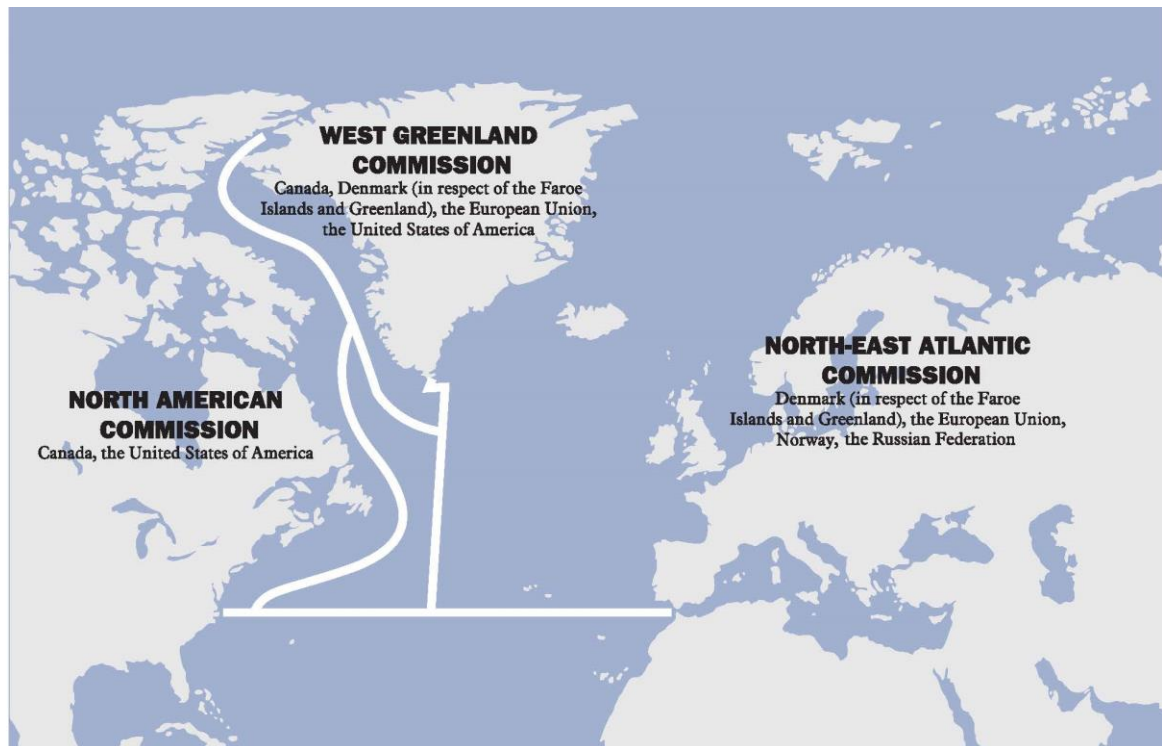


Figure 5.1.1. NASCO Commission Areas for data submission.

Data on catches and landings should be reported by Commission, Country, Major Stock Unit (see Table 5.1.3), Minor Stock Unit, and Year (see Appendix 1 and Annex 1 for all definitions and codes and Figure 5.1.1 and Table 5.1.1 for descriptions of the Commission areas).

Data should be reported for 2019.

Data should be marked as provisional, where necessary.

When reporting data on salmon caught in rivers, provide the name of the river. This information will be used to develop an accepted list of salmon rivers to be used in future data calls.

5.2 Data types

5.2.1. Commercial catches

- Commercial catch (in numbers and kg) by Commission, Country, Major Stock Unit, Minor Stock Unit, sea age/size class, (sea winters or small vs large salmon), catch location (coastal, estuarine, riverine) and whether reported or unreported.
- Fish released back alive (in number) by Commission, Country, Major Stock Unit, Minor Stock Unit.

5.2.2. Recreational fisheries catches and landings

- Recreational landings (in number and kg) by Commission Area, Country, Major Stock Unit, Minor Stock Unit, sea age/size class (sea winters or small vs large salmon), catch location (coastal, estuarine, riverine), and for reported and unreported catches.
- Fish released alive (in number) by Commission, Country, Major Stock Unit, Minor Stock Unit.

5.2.3. Information on changes to harvest rates

- Report amounts (in number of individuals and by weight (tonnes)) by Country.

5.2.4. Production of farmed and ranched salmon

- Report amounts (in number of individuals and by weight (tonnes)) by Country.

6. Data submission

Data should be submitted to data.call@ices.dk as a CSV file following the format described in Annex 1. The template contains descriptions of terms and lists of codes.

Files for data.call@ices.dk should be submitted in as few e-mails as possible. The file name must include working group, country, and data type references as specified below.

Both email subject and file name must include year, working group, stock code, country: "2000DC_expert group_ICES stock code_country".

For example, email subject and file name for 2019 data submitted by France in 2020 for Atlantic salmon from North America would be: 2020_WGNAS_sal.nac.all_FR.

See Table 5.1.1 for a description of all ICES stock codes used in this data call.

7. Contact information

For support concerning the data call please contact: WGNAS chair Martha Robertson (martha.robertson@dfo-mpo.gc.ca) and WGNAS member Alan Walker (alan.walker@cefas.co.uk)

For support concerning any data call issues, please contact the Advisory Department (Advice@ices.dk).

For support concerning other data issues, please contact: data.call@ices.dk

Appendix 1. Glossary

1SW (*One-Sea-Winter*). Maiden adult salmon that has spent one winter at sea.

2SW (*Two-Sea-Winter*). Maiden adult salmon that has spent two winters at sea.

MSW (*Multi-Sea-Winter*). A MSW salmon is an adult salmon that has spent two or more winters at sea and may be a repeat spawner.

Catch-and-release fisheries Catch and release is a practice within recreational fishing intended as a technique of conservation. After capture, the fish are unhooked and returned to the water before experiencing serious exhaustion or injury.

NAC (*North American Commission*). The North American Atlantic Commission of NASCO or the North American Commission area of NASCO.

WGC (*West Greenland Commission*). The West Greenland Commission of NASCO or the West Greenland Commission area of NASCO.

NEAC (*North Eastern Atlantic Commission*). North-East Atlantic Commission of NASCO or the North-East Atlantic Commission area of NASCO.

NEAC – N (*North Eastern Atlantic Commission- northern area*). The northern portion of the North-East Atlantic Commission area of NASCO.

NEAC – S (*North Eastern Atlantic Commission – southern area*). The southern portion of the North-East Atlantic Commission area of NASCO.

NASCO (*North Atlantic Salmon Conservation Organisation*). An international organisation, established by an inter-governmental convention in 1984. The objective of NASCO is to conserve, re-store, enhance and rationally manage Atlantic salmon through international cooperation taking account of the best available scientific information.

Annex 1. Specification of data submission

(See attached Excel file, WGNAS2020DC_Annex 1)