

Stock Annex: Sandeel (*Ammodytes marinus*) in the North Sea area 3 (SA3)

Stock-specific documentation of standard assessment procedures used by ICES.

Stock:	Sandeel (<i>Ammodytes</i> spp.) in divisions 4.a and 4.b and Subdivision 20, Sandeel Area 3r (Skagerrak and Kattegat, northern and central North Sea)
Working group:	Herring Assessment Working Group
Created:	
Authors:	Espen Johnsen/ Lotte Worsøe Clausen/ Mikael van Deurs/ Anna Rindorf
Main modifications:	Stock annex revised following WKSAND 2016; all sections were revised. Section C revised following IBPSandeel 2020.
Last updated:	February 2020
Last updated by:	HAWG Sandeel

A. General

A.1. Stock definition

Stock identity

The area boundaries developed for WKSAN 2010 were based on the Christensen *et al.* (2008) bio-physical model of larval transport. During the 2016 benchmark process an alternative hydrodynamic model; HBM-ERGOM (Christensen *et al.*, 2008) was used in the bio-physical model to re-assess the divisions. This new model was used to consider the 2010 divisions as well as alternative area-divisions decided upon during the WKSand data preparation workshop held in Copenhagen in June 2016 (Figure A.1.1) and a proposal made with the industry during the benchmark in November 2016.

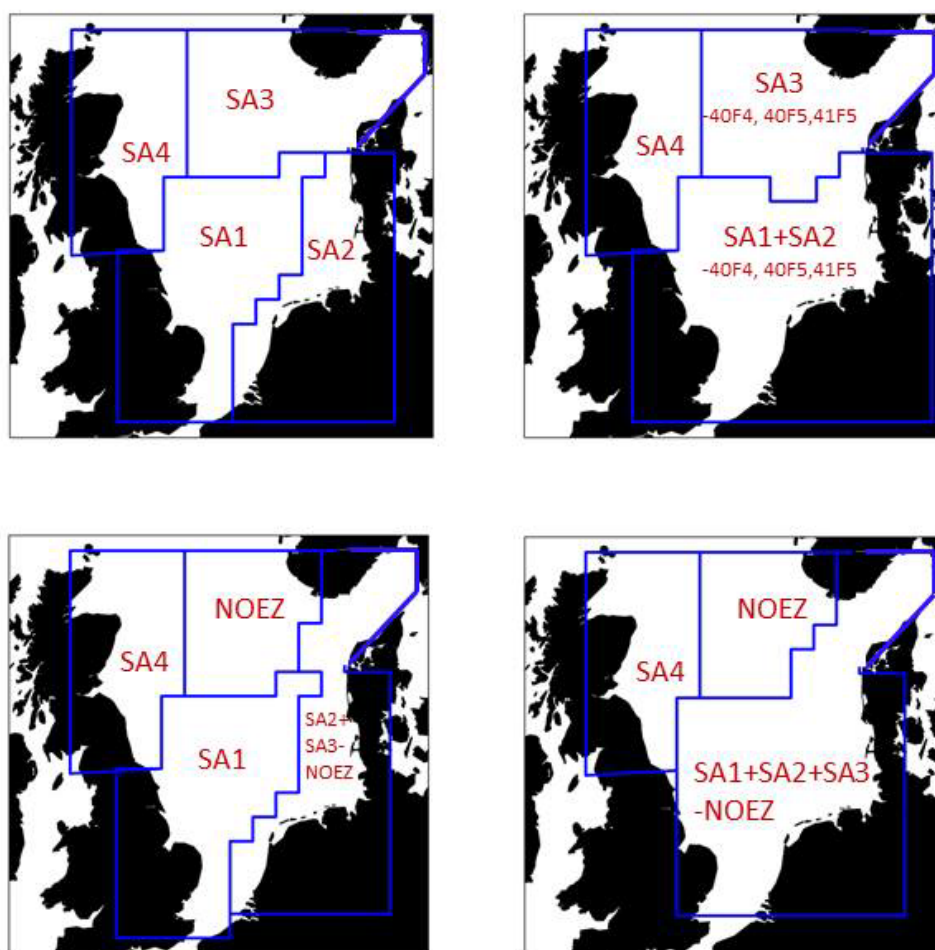


Figure A.1.1. Alternative area-divisions decided upon during the WKSAND data preparation workshop held in Copenhagen in June 2016.

An updated run of the bio-physical model (Figure. A.1.2) supports SA4 as it is today. Also the main part of SA1 (Dogger Bank) is relatively isolated from the rest of the North Sea. SA2 is also proposed as a discrete area, although inclusion of the EU part of SA3 and exclusion of the fishing grounds near the coast of Holland is suggested. With respect to the central fishing grounds (i.e. north-eastern parts of SA 1) it is less clear how they fit into the larger picture. Figures A.1.3 – A.1.6 illustrate how the Dogger bank (western part of SA1) is relatively self-sustained (i.e. high degree of retention), whereas the central parts show a much more unclear retention pattern, with larvae potentially arriving from as far away as the fishing grounds off the coast of Holland.

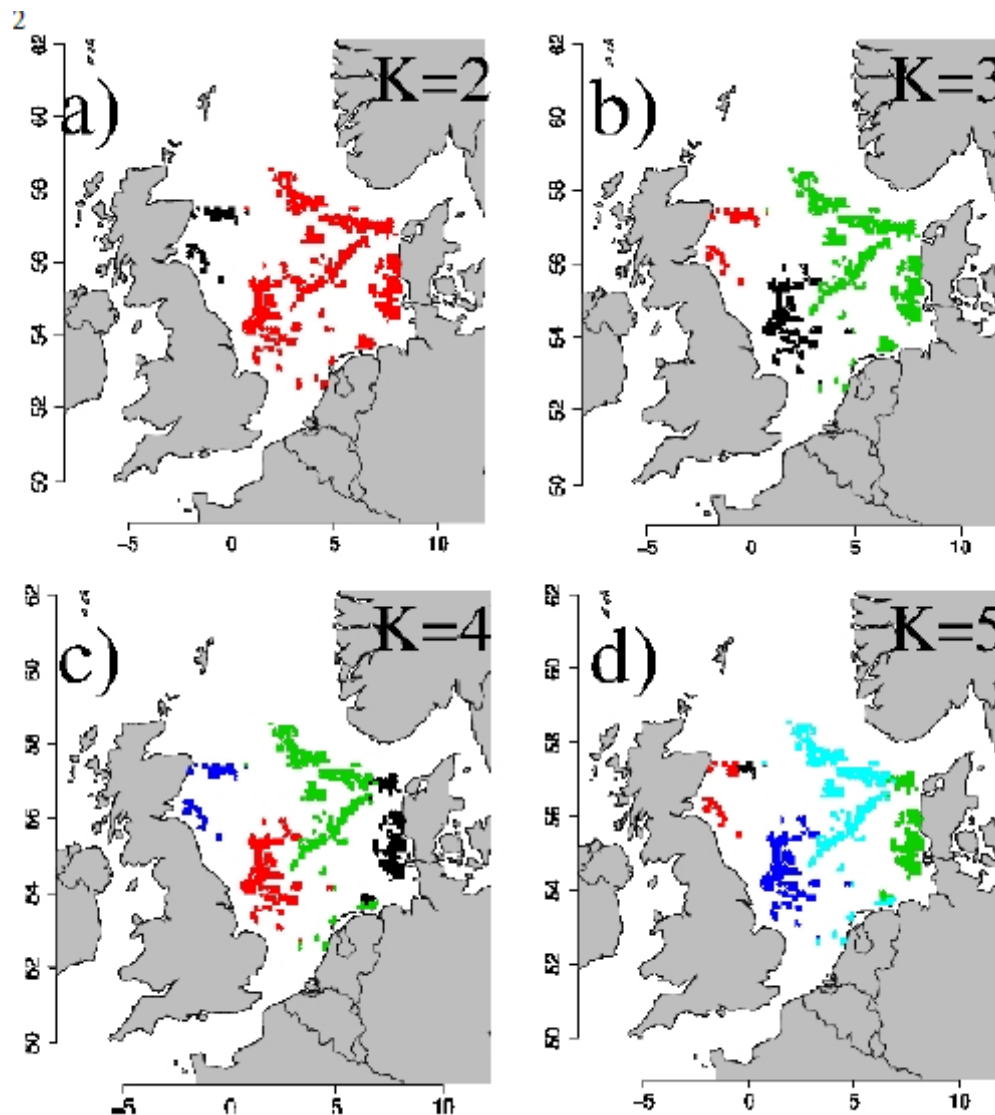


Figure A.1.2. Sandeel areas proposed by the bio-physical model. Example of an updated run of the bio-physical model (longer data time-series as input to the oceanographic forcing of the larval drift patterns, although not updated all the way to 2015). The results from four different cluster scenarios are shown (2 clusters, 3 clusters, 4 clusters, and 5 clusters).

As with all earlier biophysical models, the new model run supported the 2010 boundaries proposed for SA4. The main part of SA1 (Dogger Bank) was also found to be relatively isolated from the rest of the North Sea. The origin of larvae recruiting to the central fishing grounds (i.e. north-eastern parts of SA 1) were predicted to be more widespread with larvae potentially arriving from as far away as the fishing grounds off the coast of Holland in SA 2 in for example 2008 (Figure A.1.3). Output from this model was used to consider retention and export in a new proposal for area boundaries discussed during the WKSand 2016 benchmark (WKSand 2016 report).

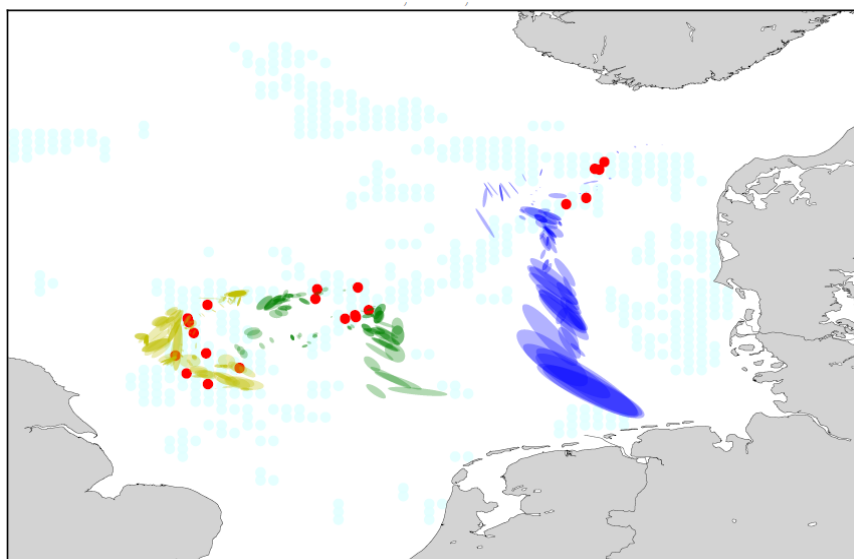


Figure A.1.3. Larvae back tracking. Larvae ($n = 378$) sampled in 2006, 2008, and 2009 were aged (based on otoliths) and back tracked to their origins. Red dots represent where larvae were sampled. The ellipse area represents standard deviation of the Gaussian representation of possible latitude and longitude hatch position. For each ellipse the area represents approximately 70% of the probable hatch position and is centered at the position with highest probability (Kristian Ege Nielsen).

The matrix of transport probabilities between sandeel habitat units (longitude \times latitude = 0.167×0.1 degrees) within old and new sandeel assessment areas (SA) was analysed. The time series of both the old and the new SA divisions show relatively high retention with occasional larger outflow of larvae, were especially a flush out of 80% with the old SA2 in 2008 highlights the more variable hydrodynamics of the smaller old area compared to the larger new SA2 using the new divisions (combining old SA2+ SA3 in EU EEZ areas). There is an apparent slight change of average transport between SAs due to the introduction of new SA divisions, however none of these changes were significant (paired t-test). Assuming passive particle drift of sandeel larvae the new SA divisions appears to provide a long term spatially stable retention of the drifting sandeel larvae within areas.

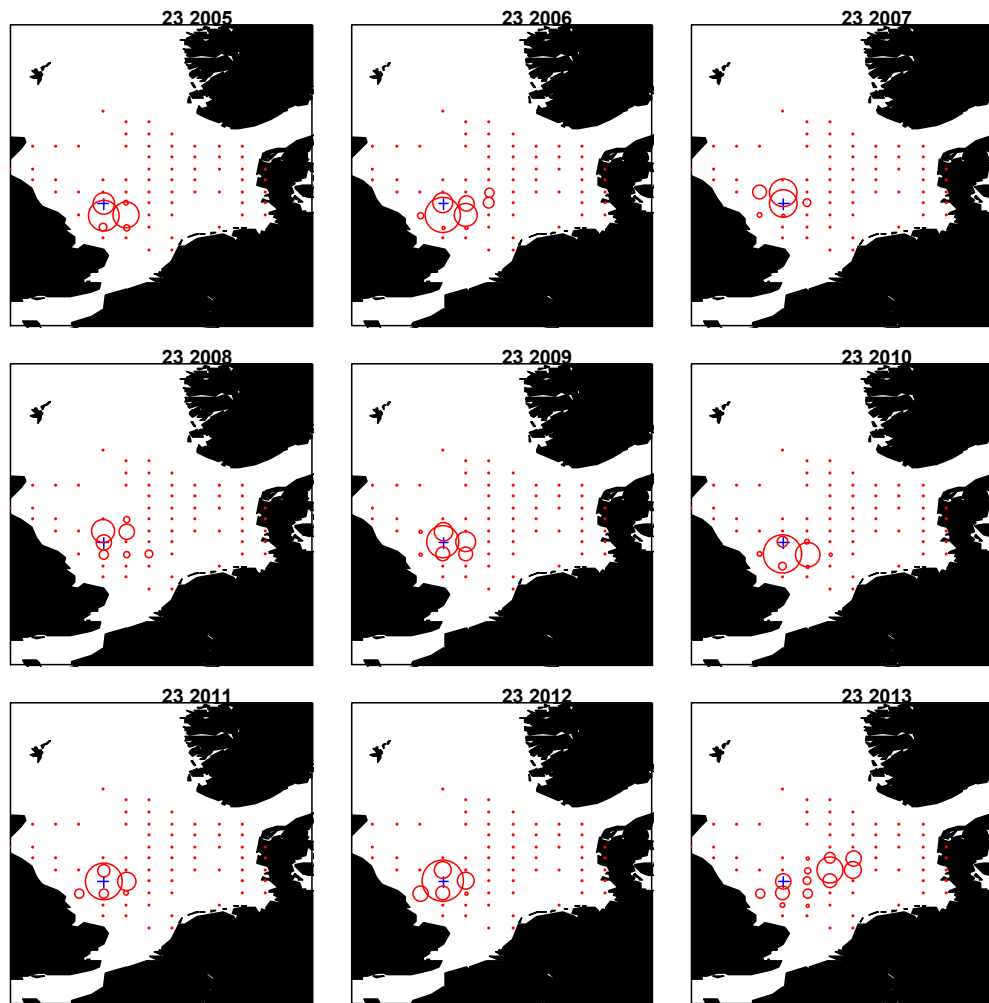


Figure A.1.4. Where does the selected square (marked with a blue cross) recruit to according to drift simulations? Bubbles indicate the relative importance of a given location as receiver of sandeel larvae. Note that the distribution of the mother population has not been taken into account. The plots are made from a connectivity matrix produced by the bio-physical model applied in Figure A.1.2.

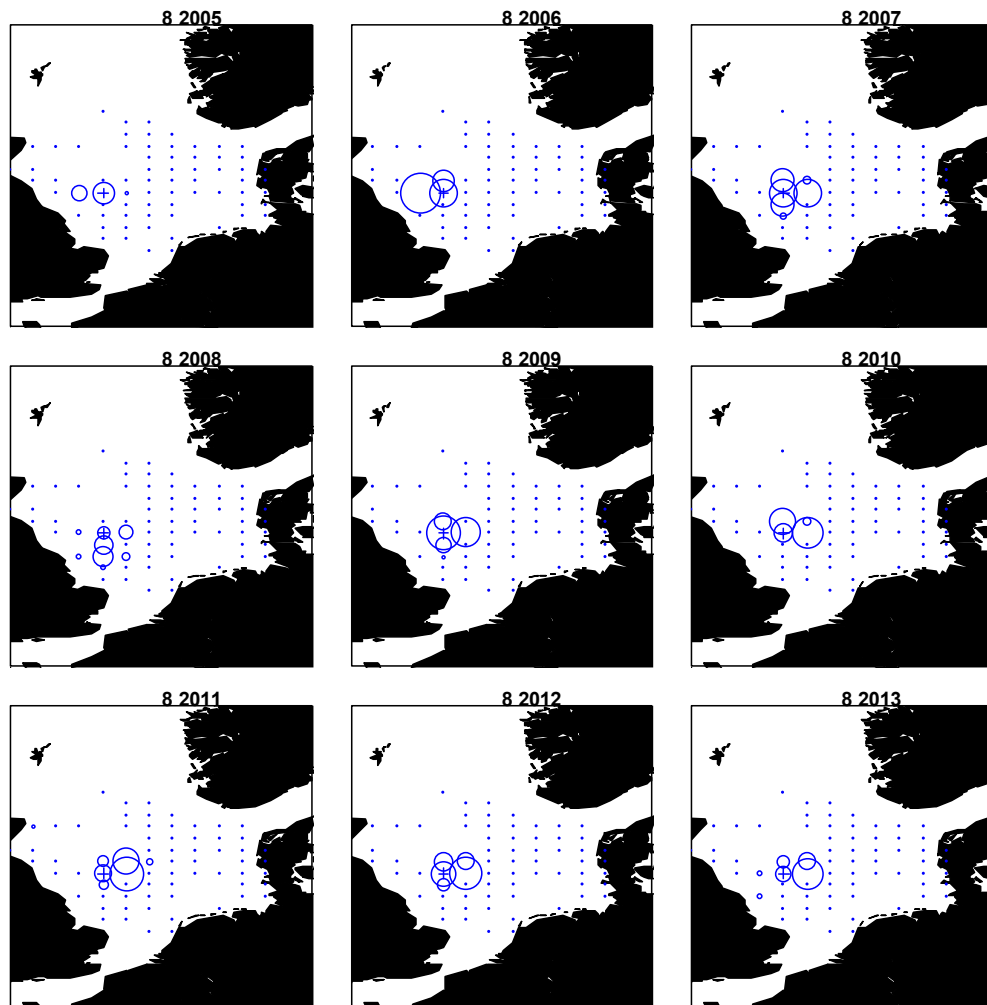


Figure A.1.5. Where does the selected square (marked with a blue cross) receive recruits from according to drift simulations? Bubbles indicate the relative importance of a given location as receiver of sandeel larvae. Note that the distribution of the mother population has not been taken into account. The plots are made from a connectivity matrix produced by the bio-physical model applied in Figure A.1.3.

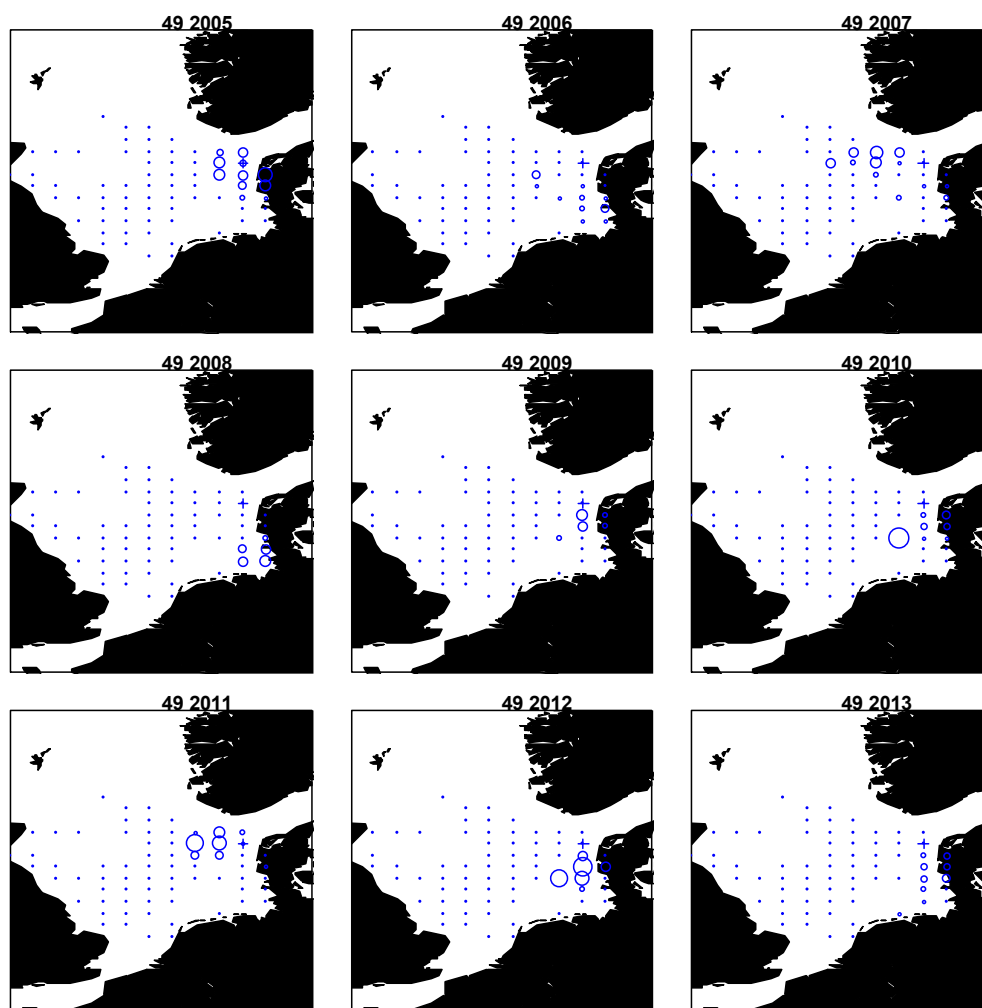


Figure A.1.6. Where does the selected square (marked with a blue cross) receive recruits from according to drift simulations? Bubbles indicate the relative importance of a given location as receiver of sandeel larvae. Note that the distribution of the mother population has not been taken into account. The plots are made from a connectivity matrix produced by the bio-physical model applied in Figure A.1.3.

Otolith microchemistry can provide a useful natural tag for studying dispersal and connectivity in regions where significant spatial differences can be detected. Gibb *et al.* (2017) investigated the natal origin of *A. marinus* in the North West North Sea and West of Scotland using an unsupervised clustering analysis of the near core region of *A. marinus* otoliths. Their analysis provided support for the proposed segregation between the Northern Isles (SA7) and SA4, predicted by an earlier biophysical model (Proctor *et al.*, 1998). Using a similar approach Wright *et al.* (WD to WKSand 2016) examined variation in otolith microchemistry at grounds in SA1, 3, and 4. Clustering indicated that there were differences in juvenile otolith chemistry among sandeel assessment areas. A linear mixed model comparison of larval and recently settled otolith chemistry found differences among sandeel assessment areas but not between life stages, suggesting that larvae tended to remain within the areas they eventually settled. The largest difference in otolith chemistry was between SA4 and SA3 grounds but there were also significant differences between the otolith chemistry of SA1 grounds and the other areas. The results of the study were therefore consistent with previous biophysical model evidence for limited connectivity between the north west North Sea

(SA4), the central North Sea (SA1) and the north east North Sea (SA3) (Proctor *et al.*, 1998; Christenssen *et al.*, 2008) and the new model runs.

A.1.1 Comparison of stock trends

High consistency in stock trends in terms of numbers at age among the sandeel assessment regions would not support the need for separate assessment areas. External consistency among sandeel assessment areas was considered using both commercial CPUE and dredge survey data. The external consistency between CPUE in different areas was analysed during WKSAND 2016 (WD_SurveyIndex) [External consistency between CPUE at age in different areas]. No sandeel assessment area was found to be significantly correlated with the Firth of Forth (SA4). High correlations ($r^2 > 0.5$) were found between recruitment in SA1 and 2 and between recruitment in the Norwegian and EU components of SA3. Moderate correlations ($r^2 > 0.25 < 0.5$) were found between recruitment in SA1 and the EU and Norwegian component of SA3. The same pattern in significant correlations was also found for CPUE at age 2.

External consistency among and within sandeel assessment areas was examined using dredge survey indices calculated using the new method for the calculation indices. The recruitment dynamics were very different between the 2010 stock areas, although the 2009 recruitment signal was evident in all areas except for SA3. A closer look at SA3 (made by dividing SA3 into an EU and Norwegian economic zone) revealed that the recruitment signal in 2006 was driven by an increase in the EU component and the one in 2013 was driven by an increase in the Norwegian component. Further details of this analysis are given in WKSand 2016 WD_SurveyIndex. Taking the two analyses together, there is generally a low level of concordance among sandeel assessment areas although recruitment in SA1 and 2 appears correlated.

A.1.2 Demographic comparisons among stock assessment areas

As stocks are expected to reflect groups with different growth and mortality parameters we would expect that the proposed sandeel stocks should differ with respect to age and size composition. Since WKSAN 2010, further studies have examined the geographical variation in size and age composition. Rindorf *et al.* (2016) confirmed the regional variation in size at age suggested by earlier studies (Bergstad *et al.*, 2001; Boulcott *et al.*, 2007). They also found a 4 fold variation in weight at age across the North Sea with size at age being higher on the warmer, deeper central and north eastern fishing grounds and lowest in SA4.

A.1.3 Final stock definition based on WKSAND 2016

With off-set in the above research the WKSAND decided to re-draw the sandeel areas of the North Sea (Figure A.1.3). The new SA3 consist of the ICES rectangles of the Norwegian part of old area 3. Obviously, other approaches may be used as well in the evaluation of proposed area divisions. One could be to look at recruitment dynamics within and between areas; see the working documents: "Co-variation between areas in dredge survey indices" and "External consistency between CPUE in different areas", and in the end any area division that does not support a robust stock assessment model is irrelevant. Elaborate description of the approaches that constituted the scientific/biological basis for the final area-division can be found in the WKSAND2016 report and supplementary working documents to that report.

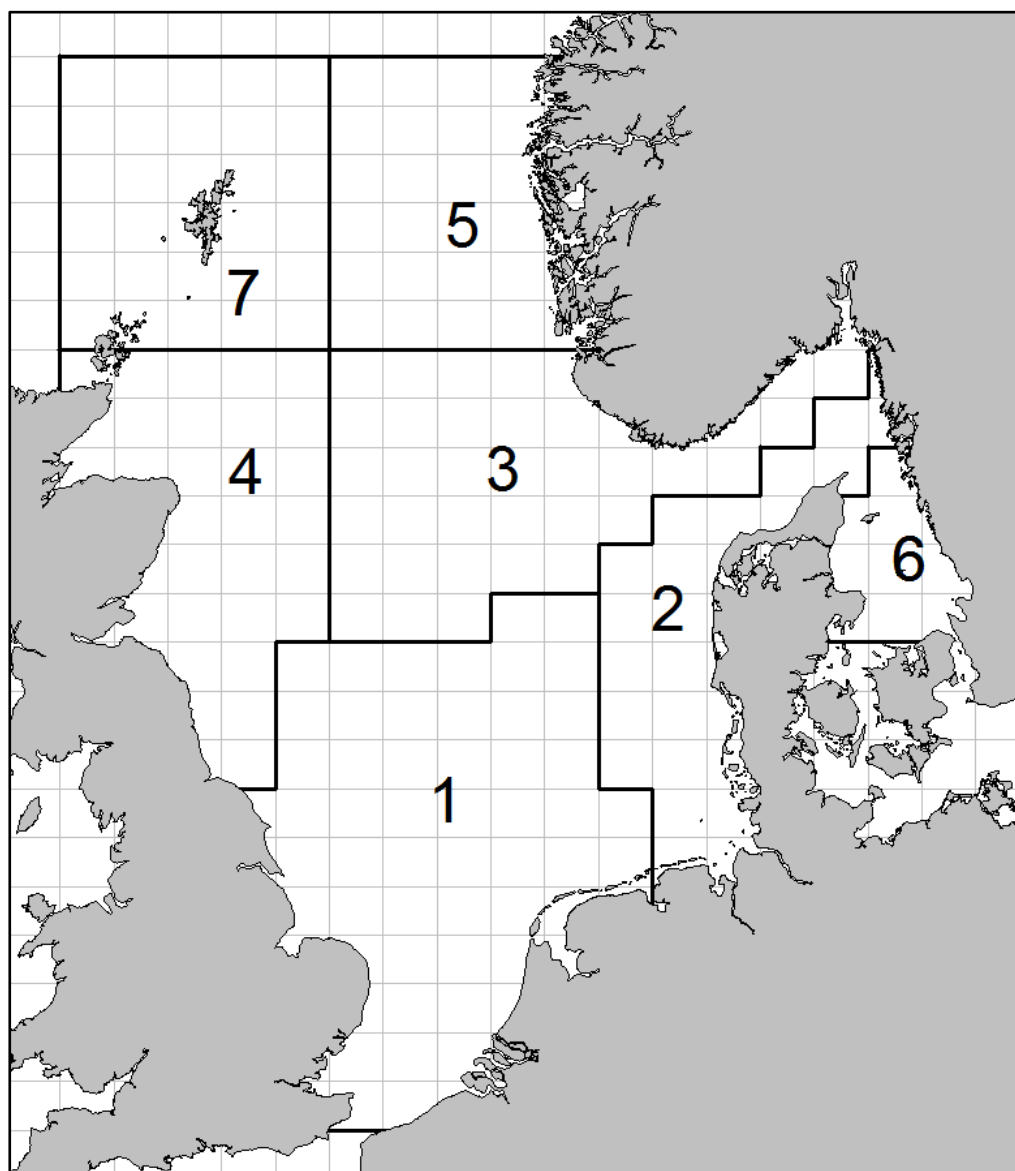


Figure A.1.3. Sandeel areas established at WKSAND 2016.

A.2 Fishery

Most of the sandeel catch consists of the lesser sandeel *Ammodytes marinus*, although small quantities of other *Ammodytoidei* spp. are caught as well. There is little bycatch of protected species (ICES WGNSSK 2004).

General description

Denmark, Norway, Sweden, UK, and Germany participate in the sandeel fishery, where Denmark is the main contributor to the sandeel landings. Up to 2002 Denmark in average contributed 73% of the total landings and after 2002, 73%.

The fishery is highly seasonal. The geographical distribution of the sandeel fishery varies seasonally and annually, taking place mostly in the spring and summer. In the third quarter of the year the distribution of catches generally changes from a dominance of the west Dogger Bank area back to the more easterly fishing grounds.

The sandeel fishery developed during the 1970s, and landings peaked in 1999 with 1.2 million tonnes. There was a significant shift in landings in 2003. The average landings of the period 1994 to 2002 was 880 000 tonnes whereas the average landings of the period 2003 to 2016 was 300 000 tonnes.

The size distribution of the Danish fleet has changed through time, with a clear tendency towards fewer and larger vessels (ICES, 2007). From 2000 there was a decline in the sandeel fishery and many Danish fishing vessels were scrapped and the quotas sold. In 2004 an introduced ITQ led to a concentration of the fishery quotas and building of larger vessels. The investment and thereby the improvement of the vessels lead to building of large trawlers, at sizes which made it possible to use even bigger trawls and codends. During the last ten years, the number of Danish vessels participating in the North Sea sandeel fishery has been stable with around 100 active vessels.

The same tendency was seen for the Norwegian vessels fishing sandeel until 2005. In 2006 only six Norwegian vessels were allowed to participate in an experimental sandeel fishery in the Norwegian EEZ compared to 53 in 2002. In 2008, 42 vessels participated in the sandeel fishery, and 29 vessels participated in 2015. From 2002 to 2014 the average GRT per trip in the Norwegian fleet increased from 269 to 1150 t.

The rapid changes of the structure of the fleet that have occurred in recent years may introduce more uncertainty in the assessment, as the fishing pattern and efficiency of the current fleet may differ from the previous fleet and the participation of fewer vessels has limited the spatial coverage of the fishery.

Fishery management regulations

Technical measures for the sandeel fishery include a minimum percentage of the target species at 95% for meshes <16 mm, or a minimum of 90% target species and maximum 5% of the mixture of cod, haddock, and saithe for 16 to 31 mm meshes.

The fishery is regulated by a TAC by area (since 2011). Since 2005, Danish vessels have not been allowed to fish sandeel before 31 March.

National regulations of the fishery took place in the Norwegian zone due to the poor stock situation (1) reduced fishing season from 1 March – 31 October to 1 April – 23 June from 2005, (2) a limited exploratory fishery in 2006 for only six vessels, (3) a fishery closure before the quota was taken in 2008 and (4) a total prohibition of sandeel fishing in 2009. Since 2010 a national management of sandeel has been in place in Norwegian water.

The Norwegian spatial management of sandeel in the North Sea

The landings on several of historical important sandeel fishing grounds in NEEZ showed a dramatic decline from the late 1990s, and where commercial depleted for many years. Details about the stock development can be found in ICES (2010), but with the aim of rebuilding the commercial depleted areas a spatial management plan was tested in 2010 and fully implemented in 2011. In 2014, and again in 2017, the plan was slightly changed, but the principles of the management plan are the same.

Annual advices based on the Norwegian management plan are listed in Tabel A.2.1

Management plan and advice process

- The areas with known sandeel fishing grounds are divided into 5 areas (Figure A.2.3) based on the differences in population developments, differences in recruitment and size at age.
- An area is closed for fishery unless the abundance of sandeel is relatively high in the area (absolute biomass age ≥ 1 estimated from the acoustic survey). There is no strict definition of “high abundance”, but no area has been open with biomass estimate has been less than 20 000 tonnes.
- All areas are divided in 2 subareas (area 3 is divided in 3 subareas). From 2017, areas 1 and 3 were also divided in 3 subareas.
- If an area is open for fishery, one of the subareas is closed to prevent too high effort and a total depletion of sandeel in an area
- A preliminary advice is presented end of January, which describes the preliminary TAC and what sub-areas that should open. This advice is based on stock developments estimated from the acoustic surveys and data from the fishing fleet, and an assumption of very low recruitment.
- An acoustic survey is carried out around 25 April – 15 May, which is used to estimate the abundance of age 1 and older sandeel. The survey results are used to give a final advice. The TAC can be adjusted upwards and new sub-areas can be open.
- One TAC advice combined is given for all open subareas.
- There is no analytic stock assessment in place, and to calculate the TAC the survey abundance estimates are used as absolute numbers. A natural mortality of 0.7 is used to estimate the survival of individual’s age > 1 at the start of next fishing year.
- To prevent fishing of lean individuals the fishing season starts 15 April (between 2010 and 2014 the fishery started 23 April)
- To avoid too high percentage of juveniles (0-age fish) the fishery ends 23 June
- If the number of sandeel < 10 cm comprise of more than 10% in a catch, the fishing ground is closed for seven days to prevent a fishery on 0-age fish. The fishing ground is re-open automatically after one week.

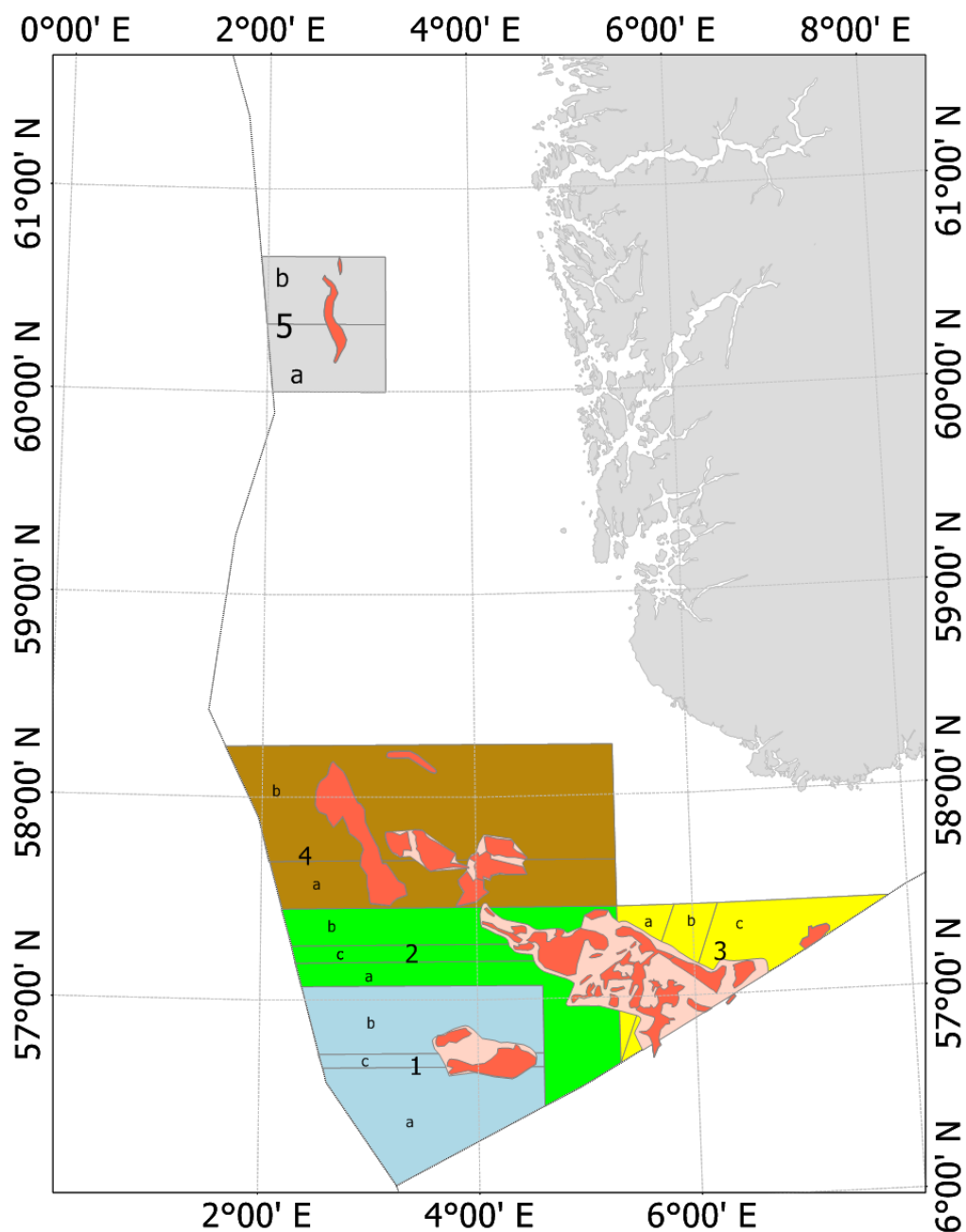


Figure A.2.3. Map of the Norwegian sandeel management areas and sub-areas in the North Sea. Historical important fishing grounds are depicted in red, and areas with suitable sandeel habitat are depicted in pink. Areas valid from 2017.

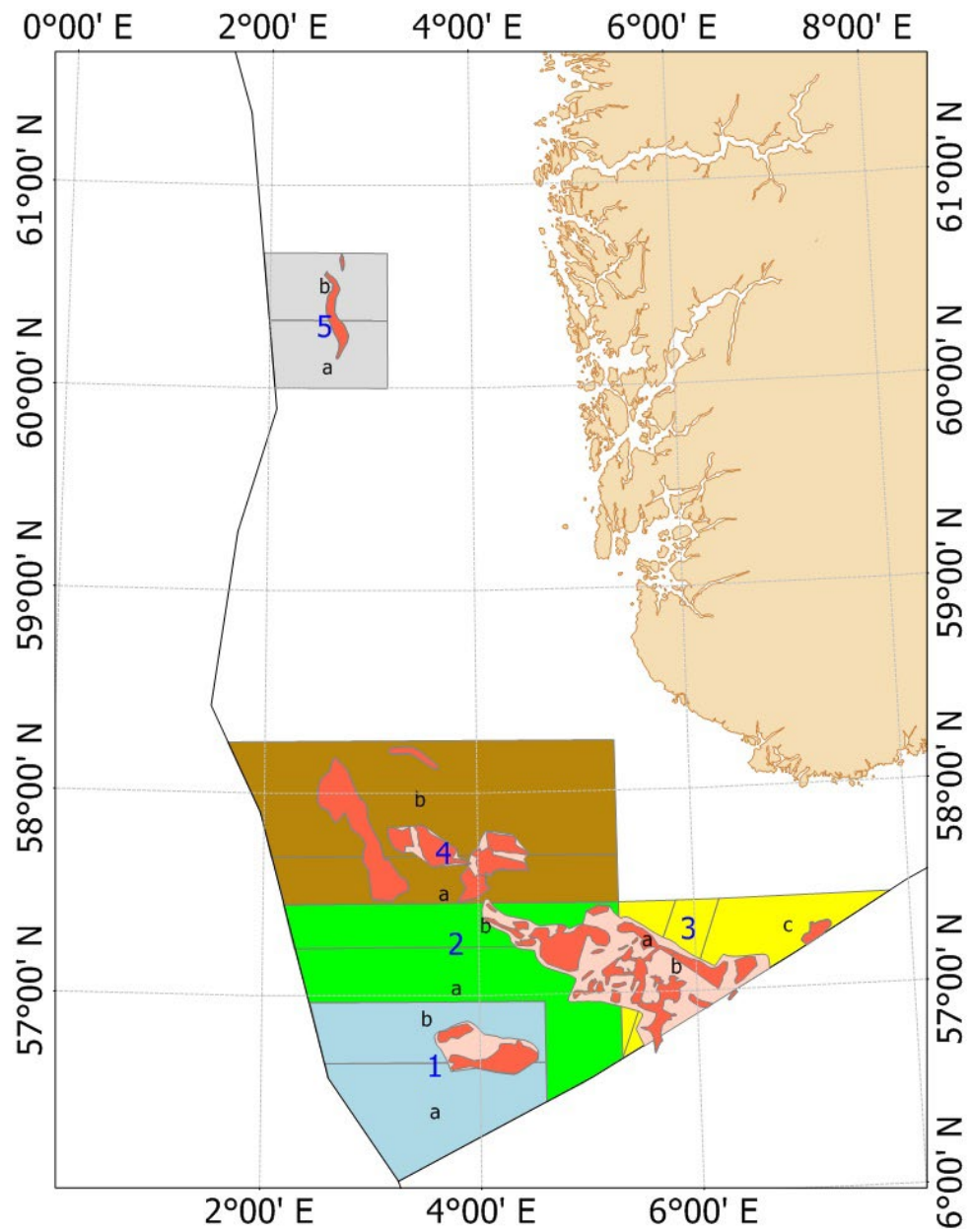


Figure A.2.3. Continues... Areas valid from 2014 to 2016.

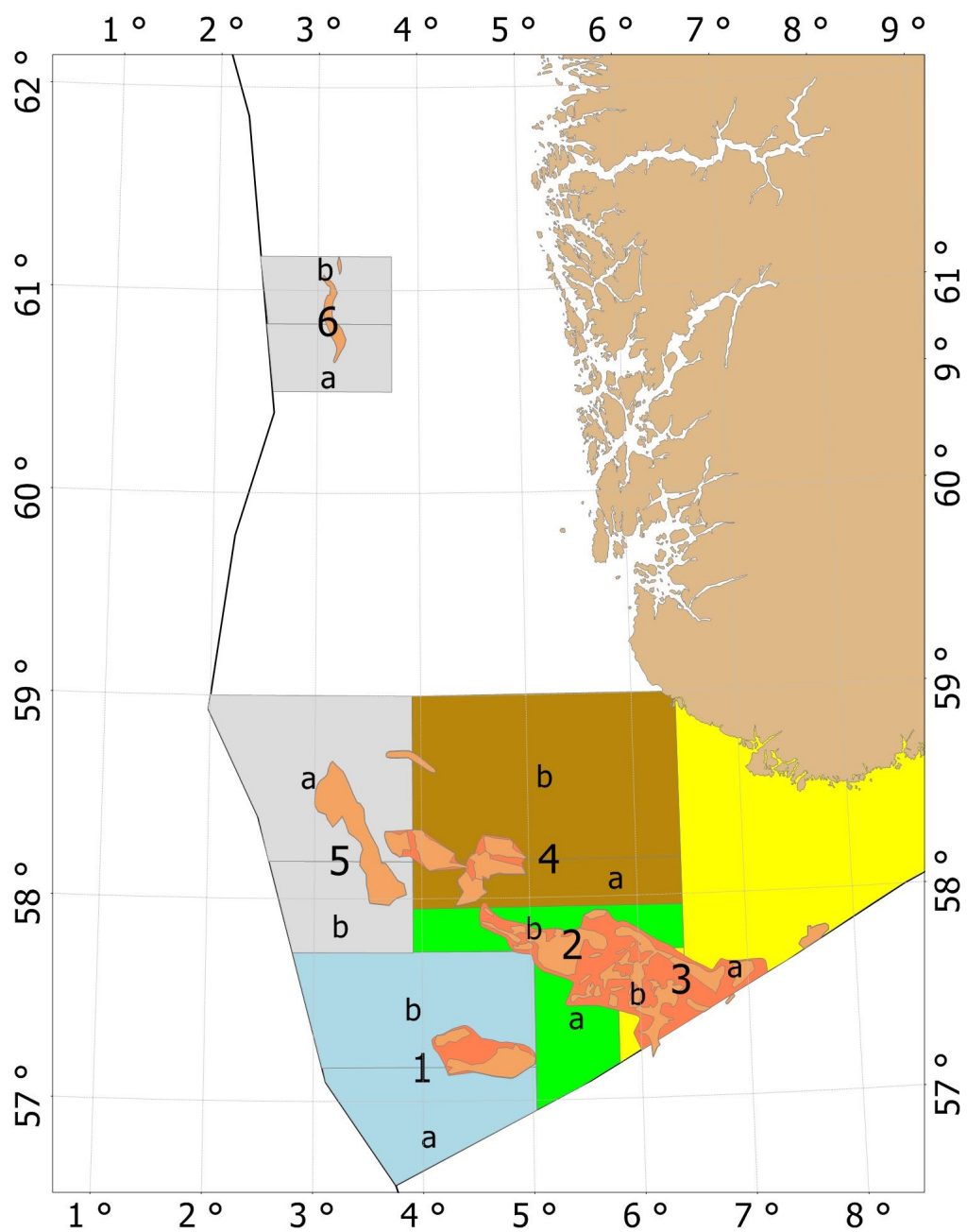


Figure A.2.3. Continues... Areas valid from 2011 to 2013.

Table A.2.1.

År	Preliminary advice		Endelig råd i mai	
	TAC advice (tonne)	Open subareas	TAC advice (tonne)	Open subareas
2010	20 000	1b, 2b, 3b	50 000	1b, 2b, 3b
2011	60 000	1a, 2a, 3a	90 000	1a, 2a, 3a
2012	40 000	1b, 2b, 3b	40 000	1b, 2b, 3b
2013	20 000	3a	20 000	3a
2014	15 000	3b, 3c	90 000	2a, 3b, 3c, 4b
2015	100 000	2b, 3b, 3a	100 000	1b, 2b, 3a, 3b, 4a
2016	40 000	1b, 2a, 3a, 3b	40 000	1b, 2a, 3a, 3b, 4a
2017	50 000	1b, 1c, 2b, 2c, 3c, 3b, 4a	120 000	1b, 1c, 2b, 2c, 3c, 3b, 4a

A.3 Ecosystem aspects

Sandeel are small, short-lived, lipid-rich, shoaling fish. They represent high quality food for many predatory fish, seabirds and marine mammals (Greenstreet *et al.*, 1997, 1998; Brown *et al.*, 2001; Stafford *et al.*, 2006; Macleod *et al.*, 2007; Daunt *et al.*, 2008). The sensitivity of the best known species is reviewed by Engelhard *et al.* (2014), who lists fish, seabird and marine mammal predators of sandeel (see section 3.2.2). Sandeel over-winter buried in sandy bottom habitats. Commercial catches show a steep decrease in catches between August and April indicating that the overwintering period for adult sandeel on average lasts for 8 months (Winslade, 1974; Wright *et al.*, 2000; Høines and Bergstad, 2001) interrupted only by spawning in December/January (Macer, 1966; Boulcott and Wright, 2008). During the period when sandeel are buried in the sandeel, they are inaccessible to many predators such as surface-feeding seabirds, though they continue to be eaten by some predatory fish, seals, and diving seabirds which apparently can dig them out of the sand (Hammond *et al.*, 1994).

Bottom-up effects on sandeel

There is strong evidence that sandeel stocks are affected by bottom-up processes involving climate and changing plankton stocks. A study of early larval survival suggested that the match between hatching and the onset of zooplankton production may be an important contributory factor to year-class variability in this species (Wright and Bailey, 1996). Frederiksen *et al.* (2005) used Continuous Plankton Recorder (CPR) data to develop an index of sandeel larval abundance for the Firth of Forth area. The sandeel larval index was strongly positively related to the abundance of phyto- and zooplankton, suggesting strong bottom-up control of sandeel larval survival (Frederiksen *et al.*, 2005). In an analysis of the underlying factors regulating recruitment and productivity of sandeel in SA 1, assessing the productivity and recovery potential of the stock under different climate and fishing scenarios using a coupled model approach, it was evident

that spring sea surface temperature (SST) in the 2nd quarter was the most significant explanatory climate variable for recruitment success (Table A.3.1a and b; WKSAND WDX, annex Y). Although other variables were statistically significant, SST q2 had the best fit and the highest degree of explained deviance overall (73.3%). In addition SSB, the number of 1-year-old sandeel (N1) and the abundance of *Calanus finmarchicus* were found significant. The final relationship between recruitment success, SSB and N1 were represented by non-linear decreasing functions (Figures A.3.1a and A.3.2b), where in the latter case the negative effect on R/SSB occurs first at intermediate value of $\ln(N1)$. The functional relationship between recruitment success and SST was best described by a negative linear relationship (Figure A.3.1c) while the effect of *C. finmarchicus* was linear and positive (Figure A.3.1d). The final model explains well the long-term dynamics and inter-annual variability in recruitment success and hindcasted SSB (based on the age-structured model) throughout the period (Figure A.3.1e and f).

Table A.3.1a. The generalized cross validation scores (GCV) and deviance explained (DEV) after fitting the full S-R model to each abiotic covariate separately. The best covariate is highlighted in bold.

Variable	GCV	DEV
SST_q1	0.571	0.613
SST_q2	0.398	0.733
SST_q3	0.506	0.647
SST_q4	0.628	0.544
SST_ann	0.461	0.689
SBT_mean	0.555	0.624
NAO_win	0.634	0.508
AMO_win	0.459	0.684

Table A.3.1b. Summary statistics of parametric coefficients and smooth terms for the final stock-recruitment model for North Sea sandeel.

A. INTERCEPT				
Estimate	SE	t-value	p-value	
-0.302	0.1	-2.97	0.007**	
B. SMOOTH TERMS				
Predictor	edf	F-value	p-value	Partial r ² (%)
SSB	1.92	24.6	<0.001***	53.2
N1	1.89	11.5	<0.001***	23.3
SST	1.00	14.5	<0.001***	19.5
<i>Cal. fin</i>	1.00	4.93	0.036*	4.9

edf is the estimated degrees of freedom for the model smooth terms where edf>1 indicates a non-linear relationship. The partial r² refer to the percentage of the total deviance explained by each covariate separately.

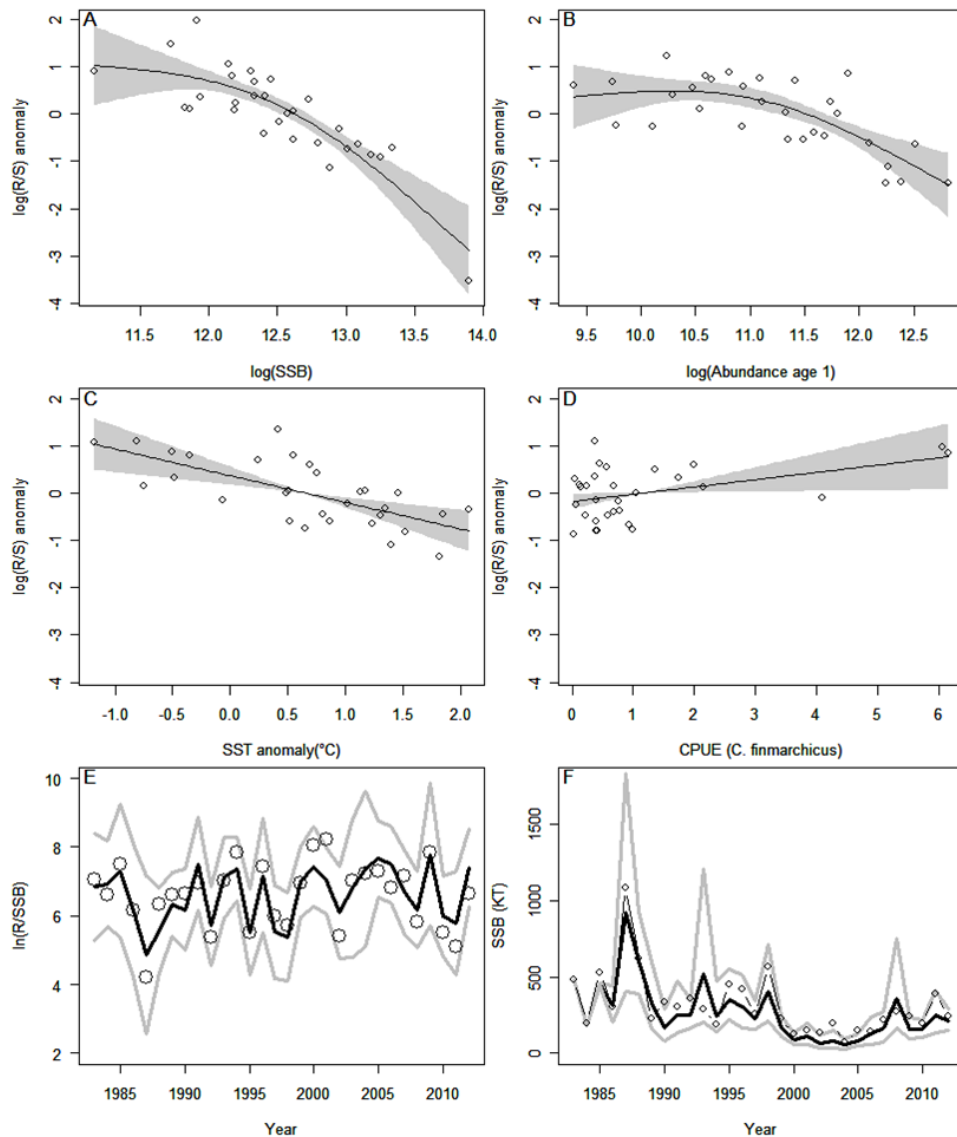


Figure A.3.1 a-f. The effects of final model predictors on sandeel recruitment success with 95% confidence intervals (grey), illustrating non-linear negative relationships with SSB (A) and abundance at age 1 (B), a negative linear relationships with SST (C), as well as positive effects of prey abundance (D; *C. finmarchicus*). (E) Observed (circles) and fitted values (black) of recruitment success with 95% confidence intervals (grey) based on the final GAM. (F) Observed and hindcasted estimates of spawning stock biomass (SSB; black) with 95% confidence intervals (grey) based on an age-structured population model.

Top-down effects on sandeel

Sandeel are important prey to a long list of predators. The sensitivity of the best known species is reviewed by Engelhard *et al.* (2014), who lists fish, seabird and marine mammal predators of sandeel (Extracts presented in Table A.3.2). Combining this with information of spatial distribution of the different species and the quality (size and condition) of the sandeel available gives an indication of where the biomass of sandeel is most likely to be related to predator performance.

Table A.3.2. Documented evidence on dependencies of North Sea top predators on sandeel. Table shows, for each predator species, the levels of mobility; proportion of diet made up by sandeel; and documented cases of effects of low sandeel abundance on top predators. Mobility describes the potential of the predator to relocate to different feeding areas in response to localised prey shortages: I, immobile year-round; IB, immobile during the breeding season only; M, mobile year-round. Diet proportions refer to the percentage composition by mass of a particular prey type, averaged over one year and over North Sea; note that local and seasonal percentages can be substantially higher or lower. Shading of species cells indicates high likelihood of effects of low forage fish availability, resulting from both a low potential to relocate and a high (>20%) proportion of forage fish in the diet. Shading of diet indicates >20% (light grey) or >50% (dark grey), and shading of reported effects indicates those on condition or growth (light grey) and on reproductive success (dark grey). From Engelhard *et al.* (2014); Literature sources: [1] Windsland *et al.* (2007); [2] Sharples *et al.* (2009); [3] Cunningham *et al.* (2004); [4] Reijnders *et al.* (2010); [5] ICES (2011); [6] Engelhard *et al.* (2014); [7] Santos *et al.* (2008); [8] MacLeod *et al.* (2007); [9] BWPI (2004); [10] Mendel *et al.* (2008); [11] Harris and Wanless (1991); [12] Stienen (2006); [13] Rindorf *et al.* (2000); [14] Furness (2007); [15] Wanless *et al.* (2005); [16] Mitchell *et al.* (2004); [17] Frederiksen *et al.* (2004); [18] Engelhard *et al.* (2013); [19] Rindorf *et al.* (2008); [20] Pomeroy *et al.* (1999); [21] Reilly *et al.* (2014).

Predator	Mobility	% Sandeel in diet	Reported effects of low forage fish abundance
Marine mammals			
Minke whale <i>Baleonoptera acutorostrata</i>	M	56%	No evidence reported for the North Sea
Grey seal <i>Halichoerus grypus</i>	IB	41%	No evidence reported, in peer reviewed literature though there is a reference in Engelhard <i>et al.</i> 2014 to an unpublished study.
Harbour seal <i>Phoca vitulina</i>	IB	37%	Later pupping dates [4], which in turn are associated with higher likelihood of breeding failure and lower pup weights [20]
Striped dolphin <i>Stenella coeruleoalba</i>	M	3%	No evidence reported
Harbour porpoise <i>Phocoena phocoena</i>	M	2%	Poor nutritional status of stranded animals reported to concur with low sandeel intake in 2002 and 2003 [8], but this does not appear to be linked to low recruitment of sandeel in the dredge survey in Firth of Forth [HAWG 2016].
Seabirds			
Sandwich tern <i>Sterna sandvicensis</i>	I	high	Highly vulnerable to changes in local food supply (especially clupeids): reproductive performance, breeding numbers and breeding distribution [12]
Arctic tern			Cury et al 2011, also papers by Monaghan's group; massive decline in breeding numbers in Shetland following collapse of sandeel stock in area 7
Shag <i>Phalacrocorax aristotelis</i>	I	high	Reproductive output probably limited by local sandeel availability at Isle of May [13] see also Cury et al 2011; massive decline in breeding numbers in Shetland following collapse of sandeel stock in area 7
Great skua <i>Catharacta skua</i>	IB	10-95%	Reproductive success influenced by local sandeel availability [14] also several papers by Votier et al, Cury et al 2011, Meek et al 2011

Arctic skua				Cury et al 2011, Phillips & Furness, Meek et al 2011; massive decline in breeding numbers in Shetland following collapse of sandeel stock in area 7
Puffin <i>Fratercula arctica</i>	IB	55%		No evidence reported for the North Sea; massive decline in breeding numbers in Shetland following collapse of sandeel stock in area 7
Guillemot <i>Uria aalge</i>	IB	42%		Provisioning of chicks influenced by local abundance and quality of sandeel and sprat [15] see also Cury et al 2011
Razorbill <i>Alca torda</i>	IB	37%		Reproductive output probably limited by local sandeel availability at Isle of May [16]
Kittiwake <i>Rissa tridactyla</i>	IB	28%		Reproductive performance strongly dependent on local sandeel availability [17] see also Cury et al 2011, Cook et al 2014; massive decline in breeding numbers in Shetland following collapse of sandeel stock in area 7
Gannet <i>Morus bassanus</i>	IB	18%		No evidence reported
Lesser black-backed gull <i>Larus fuscus</i>	M	low		No evidence reported
Northern fulmar <i>Fulmarus glacialis</i>	M	11%		Decline in breeding success with reduction in sandeel in fulmar diet, particularly around Shetland (Cury et al 2011)
Fish				
Saithe <i>Pollachius virens</i>	M	5%		No evidence reported
Horse-mackerel <i>Trachurus trachurus</i>	M	17%		No evidence reported
Whiting <i>Merlangius merlangus</i>	M	7% 85% on sandbanks [21]		Positive correlations between local sandeel abundance and condition [18]. However, [21] finds that whiting are not prey-limited in the Firth of Forth even in years of low sandeel abundance.
Starry ray <i>Amblyraja radiata</i>	M	18%		No evidence reported
Grey gurnard <i>Eutrigla gurnardus</i>	M	12%		Positive correlations between local sandeel abundance and condition [18]
Cod <i>Gadus morhua</i>	M	4%		Positive correlation between overlap with sandeel and growth in the North Sea [19]
Haddock <i>Melanogrammus aeglefinus</i>	M	15% 45% on sandbanks [21]		Haddock were not found to be prey limited during years of low sandeel abundance in the Firth of Forth [21]
Mackerel <i>Scomber scombrus</i>	M	10%		No evidence reported

Furness and Tasker (2000) reviewed the ecological characteristics of seabirds in the North Sea and ranked species from highly sensitive (e.g. terns, kittiwake, Arctic skua) to insensitive (e.g. northern gannet) to reductions in sandeel abundance. They argued that the most sensitive seabirds would be those with high foraging costs, little ability to dive below the sea surface, little 'spare' time in their daily activity budget, short foraging range from the breeding site, and little ability to switch diet. From their analyses, they produced a map of seabird sensitivity in the North Sea (Figure A.3.2).

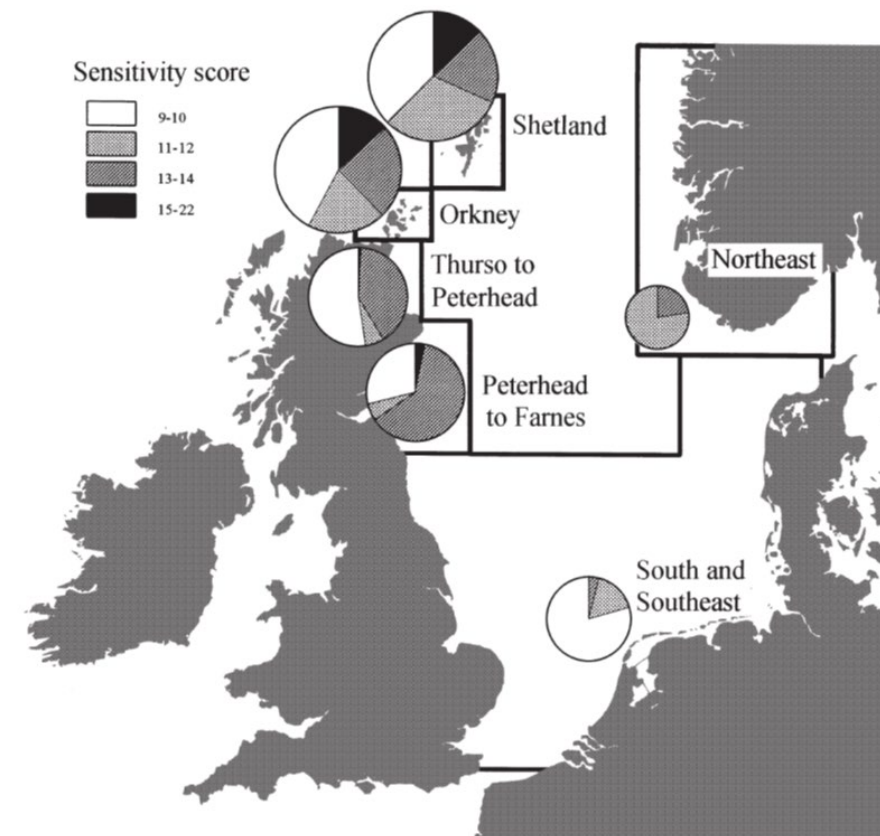
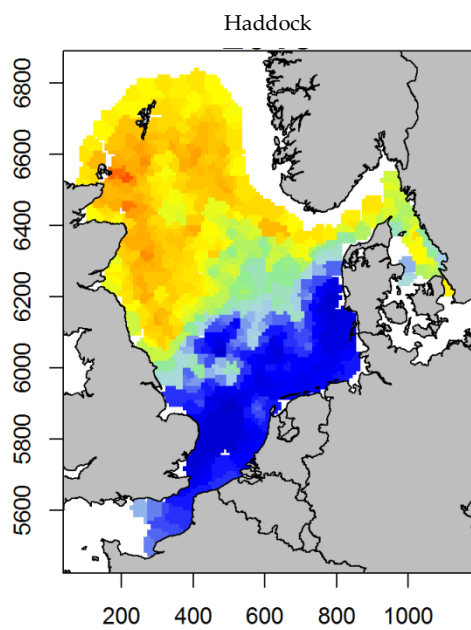
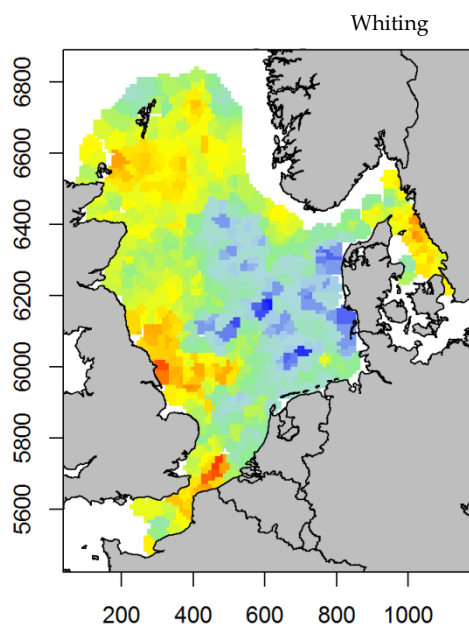
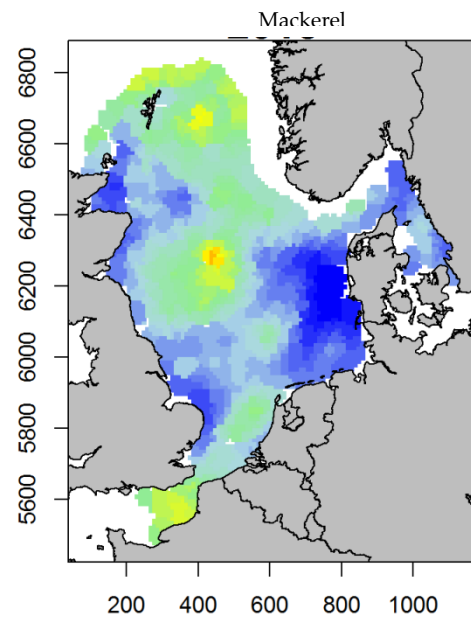
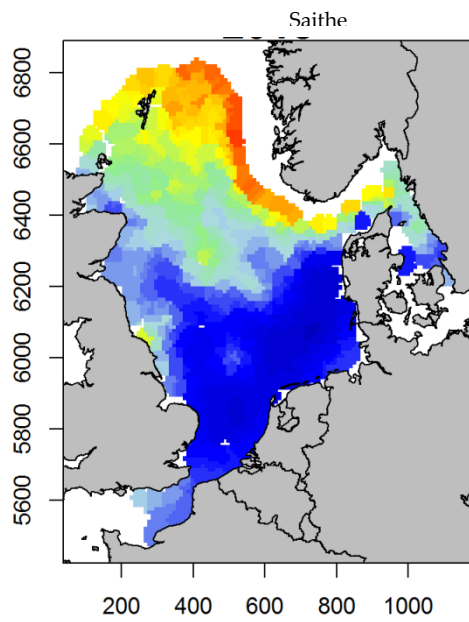


Figure A.3.2. Numbers of pairs of seabirds of high sensitivity to sandeel abundance, breeding in different parts of North Sea. Areas are defined as Shetland, Orkney, Thurso to Peterhead, Peterhead to Farnes (inclusive), southern and southeastern North Sea, and north-eastern North Sea. Size of each circle indicates size of local breeding population of seabirds of high sensitivity score. From Furness and Tasker (2000). Note that this map is now rather out of date, as many seabird populations in the northern North Sea have declined dramatically in numbers whereas populations in the south have remained more robust. The relative importance of southern areas has therefore increased since this map was produced.

Distribution of sandeel predators

Saithe and haddock tend to have a northerly distribution, whereas Gurnards, whiting and mackerel tend to be more widespread (Figure A.3.3). The abundance of fish predators is generally lower in the German bight area. Within the northern area, saithe is more abundant in the eastern areas. Seabirds and grey seals tend to be distributed close to the coast of northern Britain, with the exception of sandwich tern, which is concentrated close to the coast in the German bight (ICES 2016 WKSand report). The distribution of cetaceans seems highly variable between years (ICES 2016 WKSand report).



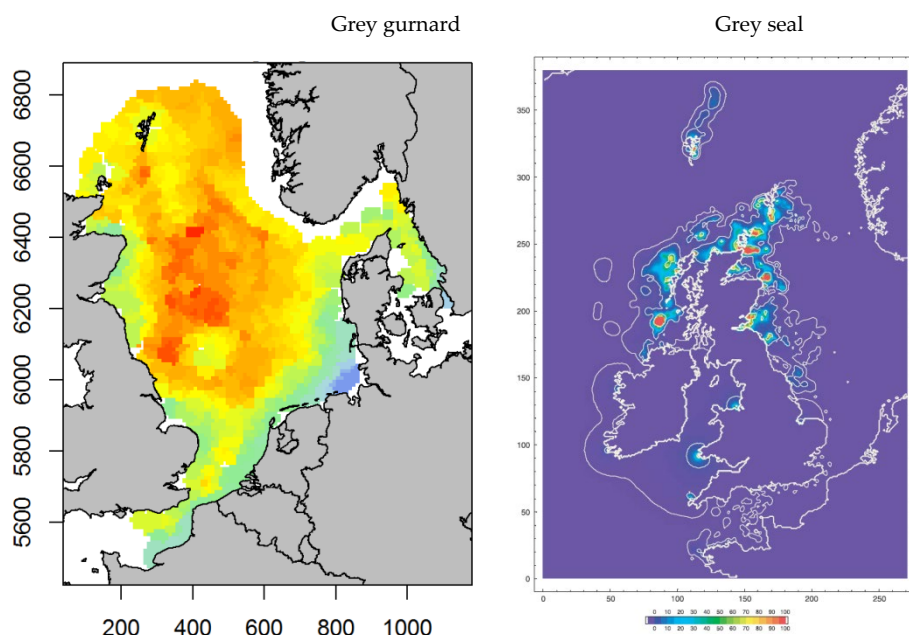


Figure A.3.3. Distribution of saithe, mackerel, whiting, haddock, grey gurnards and grey seals. Fish distributions are 2015 distributions derived from www.FishViz.org. Grey seal distribution is derived from Matthiopoulos *et al.* (2004).

Spatial patterns in sandeel size and condition

Sandeel length and weight-at-age varies substantially across the North Sea (Rindorf *et al.*, 2016) with sandeel in the North-western and far southern parts being smaller than elsewhere and sandeel in the southern parts having a lower condition than elsewhere (Figure A.3.4). These differences produce a 4-fold difference in weight at age 2 in different regions of the North Sea (weighing between 4.6 and 19.0 g in week 21).

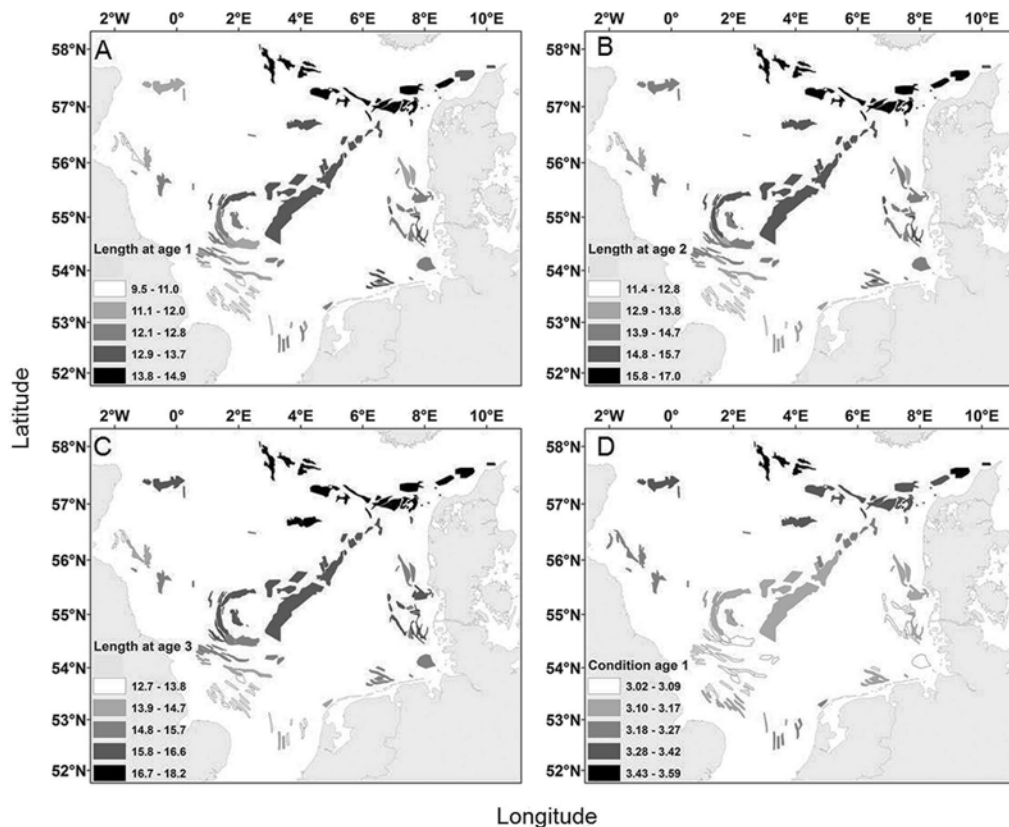


Figure A.3.4. Maps of predicted length at each ground in week 21 at ages 1 (A), 2 (B) and 3 (C) and predicted condition at age 1 in week 21 (D). Shading indicates mean length and condition, respectively, white indicating the lowest level and black the highest. Minimum length at ages 1, 2 and 3: 7.0, 12.1 and 13.1 cm, respectively. Maximum lengths at ages 1, 2 and 3: 17.1, 19.5 and 21.2 cm, respectively. From Rindorf *et al.* (2016).

Implications for ecosystem-based management

The potential conflict between sandeel fisheries and other ecosystem components rely on the degree of spatial overlap between fisheries and sensitive predators and the degree of dispersal of sandeel at different life stages.

Neither potential fishing grounds (Figure A.3.4) nor the distribution of fisheries catches (Figure A.3.5) are evenly distributed. Whereas the fishing grounds are assumed to remain relatively constant over time, the actual distribution of the fishery varies greatly from year to year in response to both changes in the availability of sandeel and changes in management between areas (Figure A.3.5).



Figure A.3.5. Sandeel landings as reported to ICES. Note that the fishery was not constrained by the agreed TACs until 2006 onwards, hence catches in the period from 2000-2005 represent a free fishery. In the period 2000-2006, the area 1 and stocks were below the current agreed Blim in all years in area 3 and all but one or two years in areas 1 and 2 (2003 in area 1, 2000 and 2003 in area 2). From, 2011 onwards, the TACs have been advised on an area basis. From (HAWG 2016).

The breeding distribution of many seabirds in the North Sea is dictated by the spatial distribution of suitable breeding habitat. Recent aerial surveys of seabirds in relation to offshore wind farm development areas (Bradbury *et al.*, 2014) have also shown that the Dogger Bank area is a hot spot for seabirds in summer, especially guillemots, razorbills and puffins, which feed extensively on sandeel. Distributions of harbour porpoises in UK waters have changed over decades. Whereas their numbers were once

high in Shetland, the distribution in 2005 shows the highest concentration on the Dogger Bank (Figure. A.3.6). Grey seal overlap with the fishery is concentrated off the Scottish east coast.

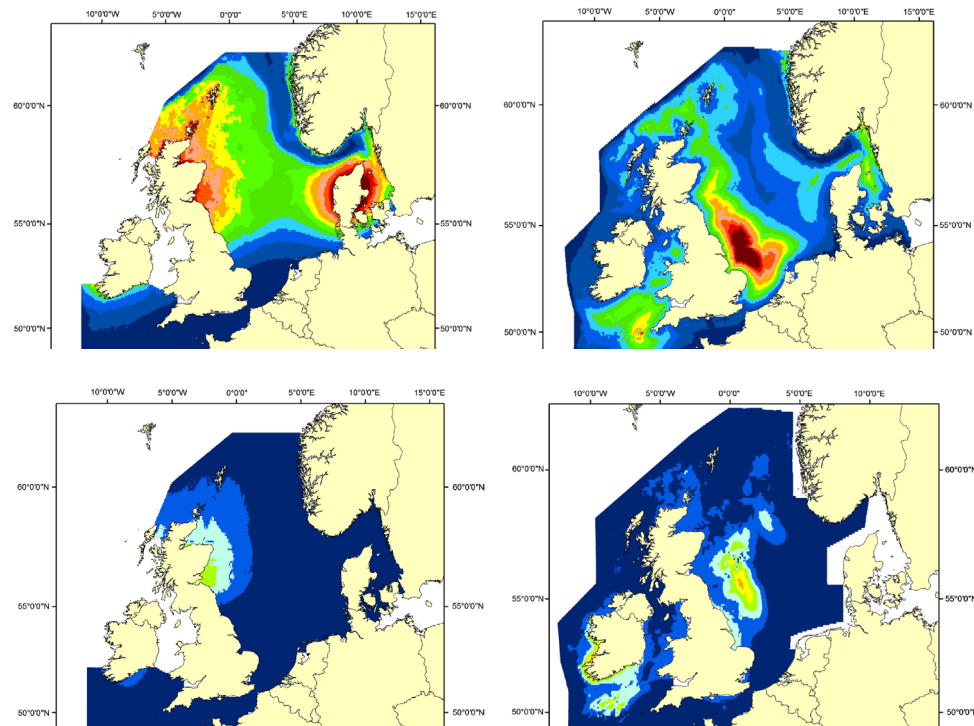


Figure. A.3.6. Distribution of harbour porpoise (top) and minke whales (bottom) based on SCANS surveys in 1994 (left) and 2005 (right). From Hammond *et al.* (2013).

B. Data

B.1 Commercial catch

Denmark, Norway, Sweden, UK, and Germany participate in the sandeel fishery, where Norway is the main contributor to the sandeel landings in SA3.

The fishery is highly seasonal. The geographical distribution of the sandeel fishery varies seasonally and annually, taking place mostly in the spring and summer. The annual patterns of the sandeel fishery between 2000 and 2015 is shown in Figure B.1.1.1.



Figure B.1.1.1 Landings per year and square.

The sandeel fishery developed during the 1970s, and landings peaked in 1999 with 1.2 million tons. There was a significant shift in landings in 2003. The average landings of the period 1994 to 2002 in the North Sea was 880 000 tonnes whereas the average landings of the period 2003 to 2016 was 300 000 tonnes.

B.1.1 Landings data

Landings are reported from all countries, however, only Danish and Norwegian catches are sampled for biological parameters (see section B.2). All landings are used for reduction purposes.

B.1.2 Data coverage and quality

Over time, the initiation of a self-sampling programme for the Danish fishery in 2001 and scientific sampling from landings have given a better coverage of the catch since the early 2000s. Norwegian catches are sampled either from the landing sites or from on-board samples where 100 individuals in a haul are frozen and sent to IMR.

B.1.3 Discards estimates

No discards have been reported or observed in the sandeel fishery in SA3 and there is not historical time-series of data available.

B.1.4 Recreational catches

Not relevant for this stock

B.2 Biological sampling

Self-sampling and scientific sampling from landings have given a rather high number of samples. Samples thus included Danish and Norwegian samples from harbour sampling and Danish samples taken by skippers on board vessels and frozen immediately (available from 1999 onwards), and Norwegian samples (after 2010) taken by skippers on board vessels and frozen. The Danish samples cover both age and length distributions whereas the Norwegian samples cover only length distribution prior to 1997 and both age and length samples after 1997.

B.2.1 Maturity

Maturity estimates from 2005 onwards are obtained from the Danish dredge survey in December. During WKSAND 2016 it was decided to use average maturities as no trends were observed in maturity in any of the sandeel areas and no analyses documented relationships between maturity and stock size or weight at age.

AGE 1	AGE 2	AGE 3	AGE 4
0.036	0.766	1.000	1.000

B.2.2 Natural mortality

Predation rates are estimated by WGSAM every three years, and on these occasions, the general settings of the model are also updated if deemed necessary. As a result, the estimates of natural mortality of each species may change somewhat back in time. However, the temporal patterns tend to be relatively stable between updates (Figure. 13, Table B.2.2.1).

Table B.2.2.1. Correlations between time series of natural mortality based on the 2008, 2011 and 2015 key runs (WGSAM 2008, 2011 and 2015).

KEY RUNS COMPARED	AGE 1	AGE 2
2015 vs 2011	0.825	0.708
2011 vs 2008	0.943	0.928
2015 vs 2008	0.841	0.697

In the 2010 benchmark, the natural mortalities presented to the group were based on the total number of sandeel in the North Sea. Based on this, WKSAN 2010 decided that

it was inappropriate to use temporally variable natural mortalities as the temporal development may be different in different sandeel assessment areas. Since then, the multispecies model has been adjusted to estimate natural mortalities of sandeel in the southern (current assessment areas 1 and 2) and northern (current sandeel areas 3 and 4) separately. As suggested in the 2010 benchmark, the natural mortalities differ substantially between areas.

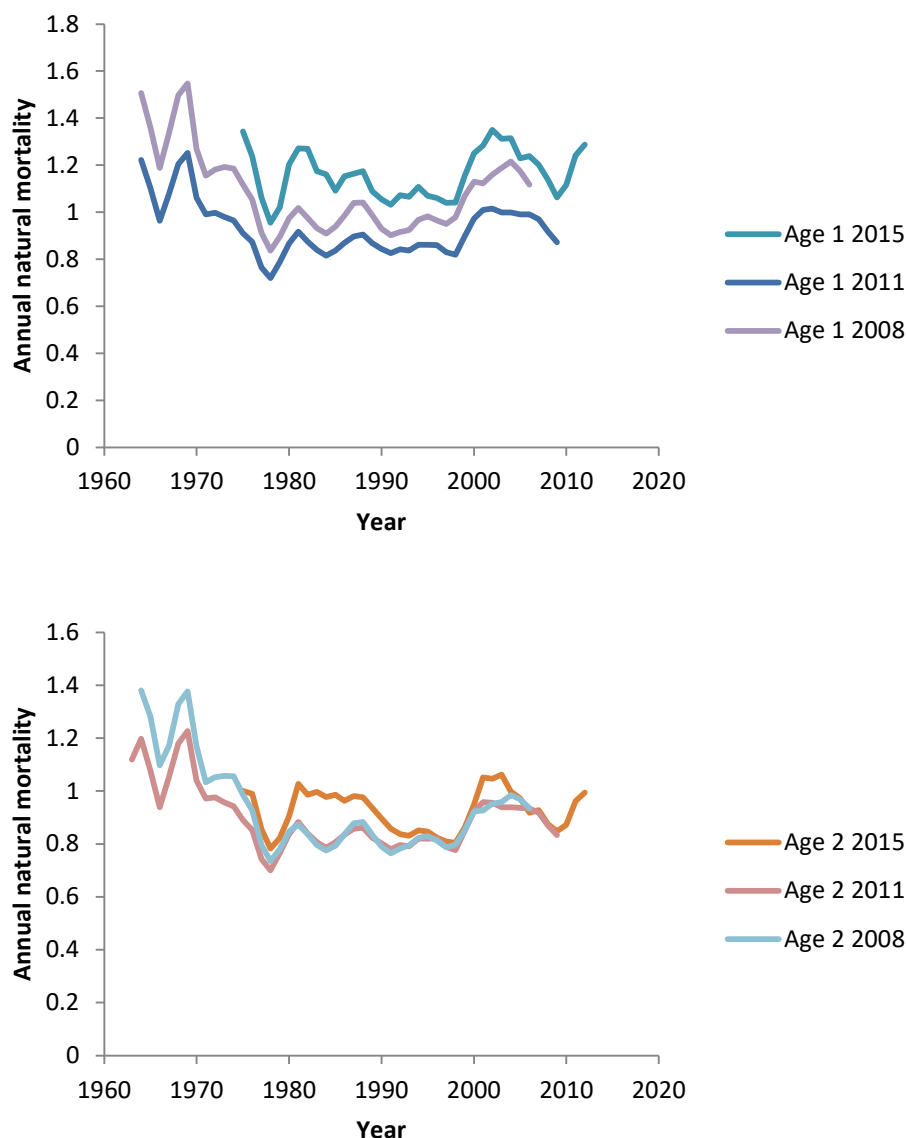


Figure. B.2.2.1. Estimates of annual natural mortality based on 2008, 2011 and 2015 key runs of the multispecies model SMS (WGSAM 2008, 2011, 2014 and 2015). The values of the 2015 key run are derived as the average of northern area (upper panel) and southern area (lower panel), weighted by the abundance of the age group in the beginning of the year.

B.2.2.1 Natural mortalities modified for inclusion in assessment

Given all this information, it was decided to use 3-year average values of natural mortality at age in sandeel area 1 (ICES 2016, WKSand report). WGSAM recommends using a smoothed version, for example 3-year averages before including natural mor

Thus WKSAND 2016 decided to apply a 3-year average values of natural mortality at age in sandeel area 1 (ICES 2016, WKSAND report). 3-year averages of natural mortality at age from multispecies modelling of southern sandeel (SMS, WGSAM 2015) were used. The last value provided is used for all years following the latest data point. Tables B.2.2.1.2 shows natural mortality pr. Year and age.

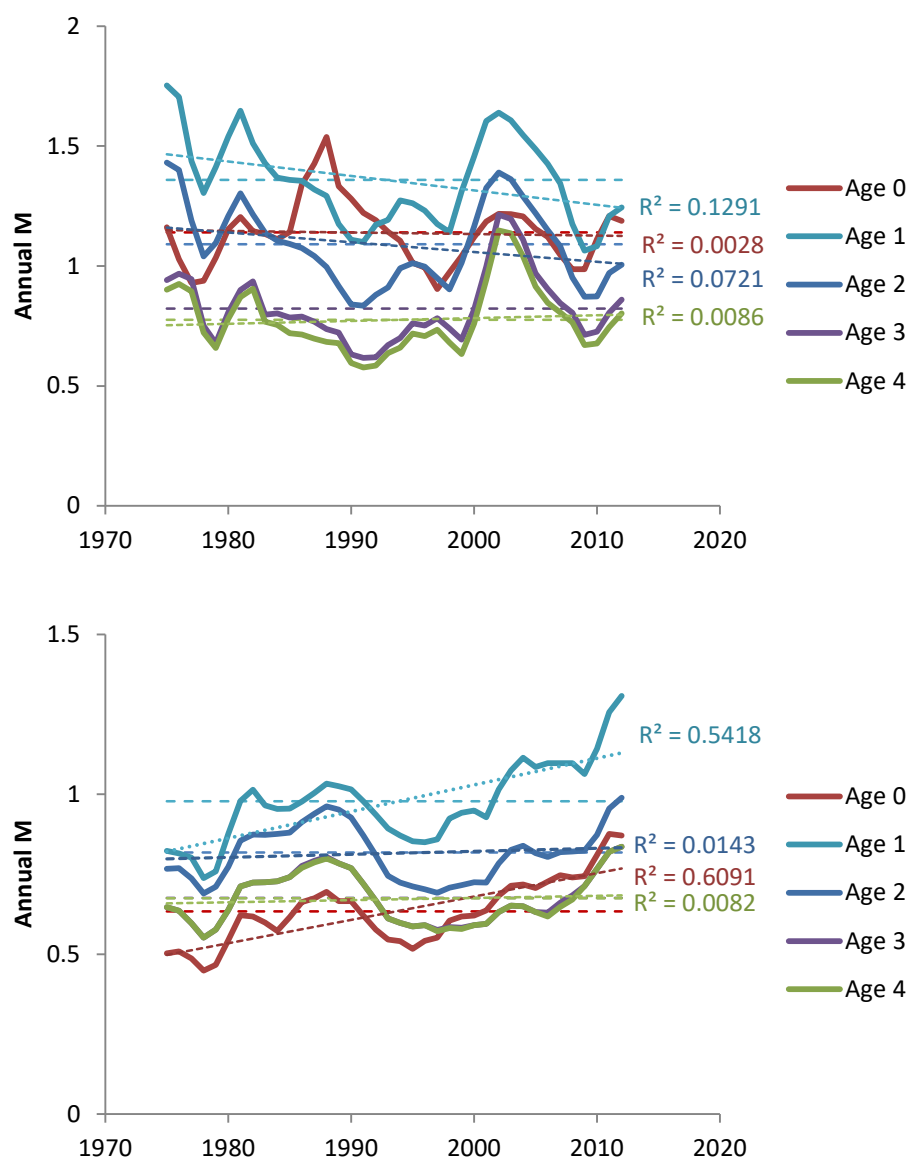


Figure. B.2.2.1.1. Estimated annual M in the northern (top) and southern (bottom) sandeel stock. Averages over the entire time period are shown at broken lines, trends as dotted lines.

Table B.2.2.1.1 Minimum and maximum annual estimates in % of the average M for specific ages and areas.

AGE	NORTHERN		SOUTHERN	
	Min	Max	Min	Max
0	79%	135%	71%	138%
1	79%	129%	76%	134%
2	77%	132%	85%	121%
3	75%	148%	82%	124%
4	75%	148%	82%	125%

Table B.2.2.1.2. Annual natural mortality at age in new area 3.

Year/Age	Age 0	Age 1	Age 2	Age 3	Age 4
1986	1.340	1.330	1.044	0.771	0.690
1987	1.430	1.185	0.926	0.696	0.627
1988	1.540	1.154	0.891	0.665	0.616
1989	1.330	1.006	0.779	0.621	0.583
1990	1.280	1.045	0.790	0.603	0.563
1991	1.220	1.011	0.768	0.570	0.531
1992	1.190	1.111	0.831	0.591	0.561
1993	1.140	1.111	0.843	0.625	0.596
1994	1.110	1.154	0.889	0.640	0.603
1995	1.010	1.167	0.926	0.708	0.669
1996	0.990	1.162	0.938	0.712	0.672
1997	0.900	1.053	0.847	0.704	0.668
1998	0.970	1.039	0.809	0.671	0.616
1999	1.040	1.243	0.930	0.636	0.582
2000	1.120	1.258	0.948	0.672	0.628
2001	1.190	1.588	1.309	0.984	0.921
2002	1.220	1.481	1.217	1.062	1.005
2003	1.220	1.533	1.287	1.134	1.075
2004	1.210	1.513	1.240	1.073	1.003
2005	1.150	1.464	1.192	0.947	0.898
2006	1.120	1.420	1.139	0.892	0.842
2007	1.050	1.285	1.010	0.796	0.758
2008	0.990	1.118	0.885	0.754	0.716
2009	0.990	1.055	0.865	0.706	0.666
2010	1.110	1.028	0.801	0.676	0.629
2011	1.210	1.160	0.915	0.765	0.698
2012	1.190	1.208	0.965	0.829	0.780
2013	1.190	1.226	0.985	0.847	0.797
2014	1.190	1.187	0.941	0.808	0.761
2015	1.190	1.147	0.898	0.770	0.723
arith. mean	1.161	1.215	0.960	0.764	0.716

B.2.3 Length and age composition of landed and discarded fish in commercial fisheries

Sandeel measured for length distribution were weighed in the Danish samples whereas only aged sandeel were weighed from the Norwegian samples. To obtain weight-at-length for Norwegian samples, the parameters of the weight-length relationship (per month year and old Sandeel sampling area; see ICES 2010, Figure 4.2.1).

$$W = aL^b$$

were estimated using the sandeel weighed in the Norwegian age samples after 1997 and Danish length-weight relationships before 1997 and weight-at-length estimated for sandeel which were not weighed. All data are combined in the analyses, corresponding to the assumption that the composition of catches taken in a given year and month did not differ between countries. No differences in age-reading was evident (Coad 2016, WDX to WKSand 2016).

B.2.3.1 Estimating age length keys

Only age readings of *Ammodytes marinus* and unidentified sandeel *Ammodytes* spp. are used. The method suggested by Rindorf and Lewy (2001) is used to assure that the estimation is optimized when sampling is sparse. This method is used to estimate an age-length-key for each combination of year, time and area (Table B.2.3.1). When the number of fish aged is too low to allow a reliable estimation on rectangle level (confidence limits of the estimate exceeds +/- 25%), higher aggregation levels are used (Table B.2.3.1). When a given age is not observed in an age sample, this is assumed to reflect an absence of this age only if the number of fish sampled of this age or older exceeds 10. Otherwise, the absence of the particular age is assumed to be a result of low sampling efforts, and the probability of being of the particular age compared to the probability of being older taken from a higher aggregation level. The probability of being of a given age is set to zero at lengths outside the interval of lengths observed for this age +/- 2 length groups (1 cm groups from 6 to 20 cm, 2 cm groups between 20 and 30 cm). Overdispersion (Rindorf and Lewy, 2001) was not estimated.

Table B.2.3.1. Aggregation levels for age length keys and length distributions

Level	Space	Time
3	Square	Jan-feb, march, April (1-15), april (16-30), may (1-15), may (16-31), june (1-15), june (16-30), july, aug, sep-oct, nov-dec
4	Sandeel sampling areas within assessment areas(Figure. 1)	Jan-feb, march, april (1-15), april (16-30), may (1-15), may (16-31), june (1-15), june (16-30), july, aug, sep-oct, nov-dec
5	Aggregated sandeel sampling areas within assessment areas: 1A+1B, 1C, 2A+6, 2B+3, 4+5, 3AS+3AN	Jan-feb, march, april (1-15), april (16-30), may (1-15), may (16-31), june (1-15), june (16-30), july, aug, sep-oct, nov-dec
6	Aggregated sandeel sampling areas within assessment areas: 1A+1B, 1C, 2A+6, 2B+3, 4+5, 3AS+3AN	Jan-mar, april-may, june-aug, sep-dec
7	Sandeel assessment areas	Jan-mar, april-may, june-aug, sep-dec
8	Sandeel assessment areas	Jan- june, july-dec
9	All areas together	Jan- june, july-dec
10	All areas together	Jan- dec

B.2.3.2 Estimating age distributions and mean weight-at-age

The number of *A. marinus* of each age (0 to 4+) per kg and the mean weight per individual of each age in each length distribution sample was estimated by combining the age-length key and the length distribution specific to that square and period (periods given in Table B.2.3.1). The average number of sandeel per age per kg and their mean weight in a given rectangle in each month was estimated as the average of that recorded in individual samples when at least five samples were available. Mean weight was only estimated when the total catch of a given age in the square exceeded ten. If the total North Sea sampling resulted in less than ten sandeel of a particular age, the mean weight for that age from the North Sea as a whole was used. When less than five length samples were taken, the next aggregation level (Table B.2.3.2), was used. Hence, for each rectangle, month and year, the average number of *A. marinus* per age and kg caught was estimated and the level noted. No correction was made for differences in condition between on-board samples and harbour samples.

After estimating age composition of the catches, it became clear that the historical age compositions in years prior to 1993 from working group reports could not be reproduced based on the current database. For example, in some years no 3 or 4+ aged sandeel were recorded in the database whereas these were recorded in previous working group reports. Because of this, it was decided by WKSAN 2010 to use age compositions and weights at age historically reported for catches prior to 1993.

Table B.2.3.2. Aggregation levels for estimating the number of sandeel per age per kg.

Level	Space	Time
3	Square	Jan-feb, march, april, may, june, july, aug, sep-oct, nov-dec
4	Sandeel sampling areas within assessment areas(Figure. 1)	Jan-feb, march, april, may, june, july, aug, sep-oct, nov-dec
5	Aggregated sandeel sampling areas within assessment areas: 1A+1B, 1C, 2A+6, 2B+3, 4+5, 3AS+3AN	Jan-feb, march, april, may, june, july, aug, sep-oct, nov-dec
6	Aggregated sandeel sampling areas within assessment areas: 1A+1B, 1C, 2A+6, 2B+3, 4+5, 3AS+3AN	Jan-mar, april-may, june-aug, sep-dec
7	Sandeel assessment areas	Jan-mar, april-may, june-aug, sep-dec
8	Sandeel assessment areas	Jan- june, july-dec
9	All areas together	Jan- june, july-dec
10	All areas together	Jan- dec

B.2.3.3 Estimating catch in ton per rectangle per month

Before 1989, only logbook information stating the catch in directed Danish sandeel fishery is known. As the large majority of the catch in the sandeel fishery consists of sandeel, the distribution of catches in the directed sandeel fishery on rectangle and months were assumed to represent the distribution of sandeel catches. The total catch in tones was derived from the report of the working group on the assessment of Norway pout and sandeel (ICES 1995) and distributed on rectangles and month in the particular year according to the distribution of catches derived from Danish logbooks. From 1989 to 1993, the landings of sandeel per rectangle and month from the Danish fishery are available at DTU-AQUA. These were used to distribute total landings to rectangle and month. From 1994 to 1998, international sandeel catches in ton per rectangle per year are available. These catches were distributed to months according to the monthly distribution of Danish catches in the rectangle in the given year. If no Danish catches were recorded from the rectangle, the monthly distribution of the total catches in the ICES division was used. After 1999, international sandeel catches in ton per rectangle per month and year are available.

All catches were scaled in order to sum to official ICES landing statistics. Total catches per area are seen in Figure B.2.3.3.1.

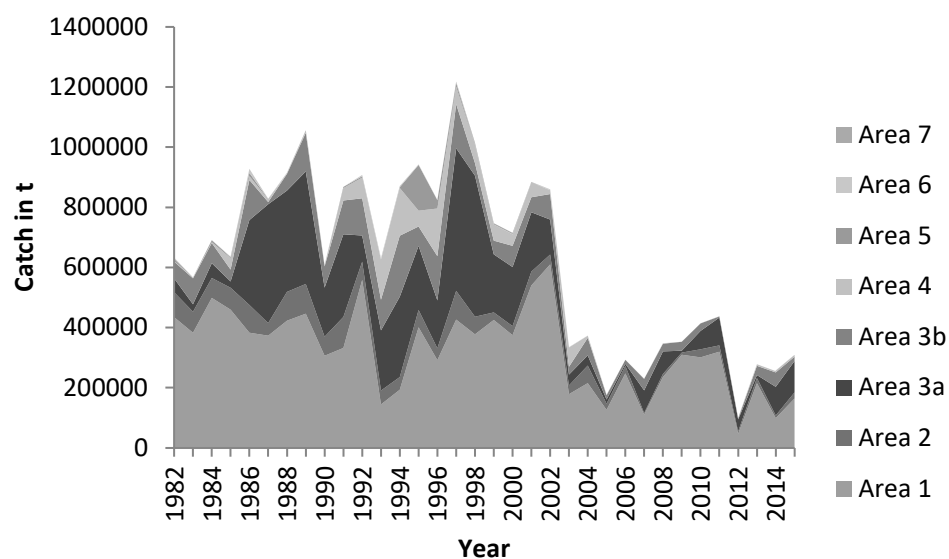


Figure B.2.3.3.1. Total catches pr. Sandeel area.

B.2.3.4 Estimating catch in numbers and mean weight

The catch in numbers per age (1000s), month and rectangle of sandeel was estimated as the product of sandeel catches in kg and the number-at-age of sandeel per kg in the particular rectangle. The total number in a larger area and longer time period is estimated as the sum over individual rectangles and months in this area. The mean weight is estimated as the weighted average mean weight (weighted by catch in numbers of the age group in the rectangle and month). Mean weight is given in kg.

B.2.3.5 Number of samples taken in each area

The number of biological samples taken was insufficient (<10 for two or more consecutive years) to conduct analytical assessments for areas 5, 6 and 7 and for area 4 prior to 1993 (Table B.2.3.5.1).

Table B.2.3.5.1. Number of samples taken in each area and suggested combined areas. Years with less than 10 samples are coloured orange

Yearly	Area 1	Area 2	Area 3	Area 4	Area 5	Area 6	Area 7	Area 3a	Area 3b	Area 2+3b
1983	79	15	34	0	0	0	0	0	34	49
1984	116	15	44	0	2	3	0	13	31	46
1985	101	20	13	19	2	3	0	1	12	32
1986	26	2	42	1	0	1	0	27	15	17
1987	62	6	66	1	0	1	0	60	6	12
1988	42	2	80	0	0	1	0	67	13	15
1989	40	5	47	0	0	1	0	43	4	9
1990	1	1	40	0	0	2	0	37	3	4
1991	25	8	54	1	0	0	0	30	24	32
1992	56	17	49	4	0	7	0	24	25	42
1993	23	16	111	15	0	7	0	64	47	63
1994	20	8	80	15	0	4	0	50	30	38
1995	41	15	75	7	7	2	0	58	17	32
1996	43	12	163	27	19	1	0	113	50	62
1997	41	23	177	25	8	3	0	116	61	84
1998	70	10	200	7	0	2	0	176	24	34
1999	263	24	68	44	0	1	0	42	26	50
2000	102	12	83	59	0	2	0	47	36	48
2001	213	9	66	90	1	1	0	33	33	42
2002	288	28	121	62	0	1	0	50	71	99
2003	281	45	64	160	0	2	0	30	34	79
2004	451	60	183	47	0	1	0	26	157	217
2005	320	20	56	30	0	1	0	34	22	42
2006	550	13	115	2	0	2	0	72	43	56
2007	295	13	261	0	0	1	0	108	153	166
2008	290	9	167	1	0	0	0	49	118	127
2009	302	7	127	0	0	1	0	12	115	122
2010	169	28	282	1	0	3	0	40	242	270
2011	167	42	29	4	0	4	0	17	12	54
2012	220	64	79	21	0	12	0	31	48	112
2013	292	21	240	5	0	3	0	41	199	220
2014	143	52	110	18	0	5	0	29	81	133
2015	309	62	103	38	0	4	0	48	55	117

B.3 Surveys

B.3.1 Survey design and analysis

Smooth age length keys are estimated using the methodology described in [ref1]. The ALKs are assumed constant within years and assessment area. Numbers-at-age are then calculated using the observed numbers-at-length and the estimated ALKs. The method provides an objective fill-in procedure for missing length groups. The methodology has been implemented in the DATRAS package with full source code available [ref3].

Survey indices by age and area are calculated using the methodology similar to what is described in [ref2], that is a Delta-Lognormal model which consists of a binomial presence/absence model and a lognormal model for strictly positive responses. Once the parameters in the model are estimated, a standardized survey index is obtained by predicting and adding up the abundances in a fine meshed grid of points that is the same in all years. This can be thought of as performing a virtual experiment where the experimental conditions such as the haul positions and time of day are exactly the same in each year. The grid is created based on information about the sandeel banks. Only sandeel banks that have been sampled at least 3 times are included in the grid.

The following equation describes the model considered for both the presence-absence and the positive parts of the model for the i th haul:

$$g(\mu_i) = \alpha(\text{Year}_i, \text{SP ID}_i) + \beta(\text{SubArea}_i) + U(\text{Year}_i, \text{SubArea}_i) + f_1(\text{time}_i)$$

Where SP_ID is a categorical variable for assessment area. SubArea is a categorical variable for sub area (see those sub areas in Figure B.3.1.1). Time is time of day. μ is the expectation on the appropriate scale (i.e. probabilities and log abundances). The levels of α and β are estimated as fixed effects, f_1 is a cyclic cubic regression spline on the time of day (i.e. with same start end end point), and $U \sim N(0, \sigma_u^2)$ are random effects for each combination of year and sub area. Parameters are estimated independently by age group.

More information is provided in the Survey Index working document (WD_SurveyIndex).

Casper W Berg and Kasper Kristensen. Spatial age-length key modelling using continuation ratio logits. *Fisheries Research*, 129:119–126, 2012.

Casper W Berg, Anders Nielsen, and Kasper Kristensen. Evaluation of alternative age-based methods for estimating relative abundance from survey data in relation to assessment models. *Fisheries Research*, 151:91–99, 2014.

Kasper Kristensen and Casper W. Berg. Datras package for r. <http://rforge.net/DATRAS/>, 2012.

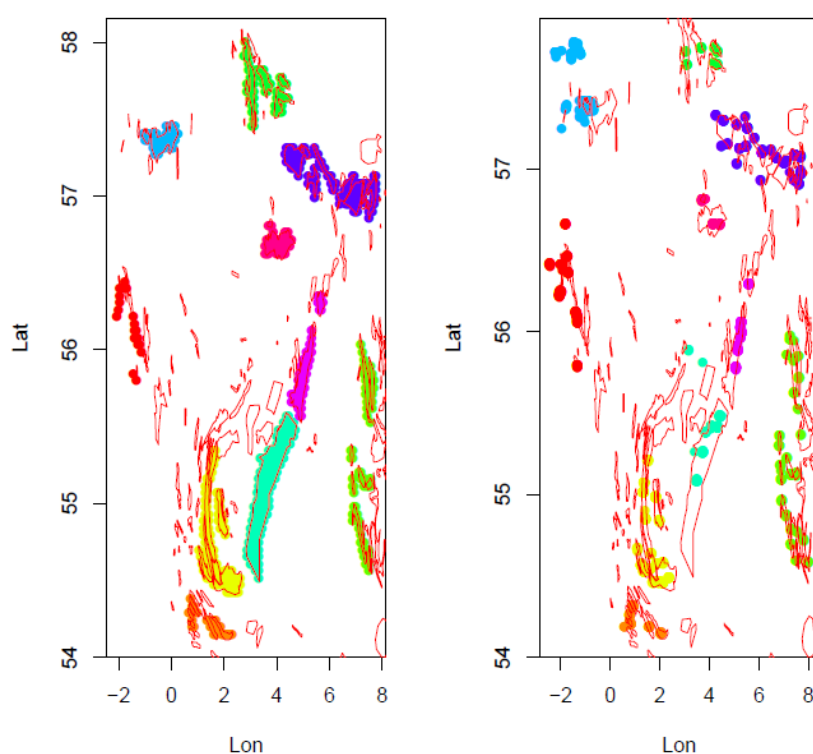


Figure B.3.1.1: Right: Survey index grid. Each colored dot represents a virtual haul, colors represents sub areas where abundance is assumed constant for a given year. Left: Actual haul positions colored by sub area. Red polygons are sandeel banks. Hauls outside the polygons are assigned a sub area based on the nearest neighbor.

B.3.2 Acoustic survey

Survey design and survey effort

The acoustic survey is carried out in the peak feeding season (about 25 April – 15 May) during daytime (between sunrise and sunset) when the sandeel form schools to feed on zooplankton. The geographical distribution of sandeel areas is reflected by the historical fishing effort, and the survey area cover all the known fishing ground for 11 geographical strata (Figure B.3.2.1). To fit the strata to the ICES sandeel assessment areas (SA) 10 strata are assigned to ICES SA3, and one stratum is assigned to SA5 (Table B.3.2.1). The method and design is described in detail in ICES (ICES WKSand 2016).

Table B.3.2.1. Overview of strata and the assignment of strata to sandeel stock assessment area

Stratum	ICES SA Area	Survey years
Vikingbanken	5	2009-2016
Vestbanken SouthWest	3	2009-2016
Vestbanken SouthEast	3	2009-2016
Vestbanken North	3	2009-2016
Outer_Shoal	3	2009-2016
Ostbanken	3	2009-2016
Nordgyden*	3	2011-13, 2015-16
Inner Shoal West	3	2009-2016
Inner Shoal East	3	2009-2016
Engelsk Klondyke	3	2009-2016
AlbjornLing	3	2009-2016

*Not included in the total estimate of SA3 as the stratum has not been regularly monitored

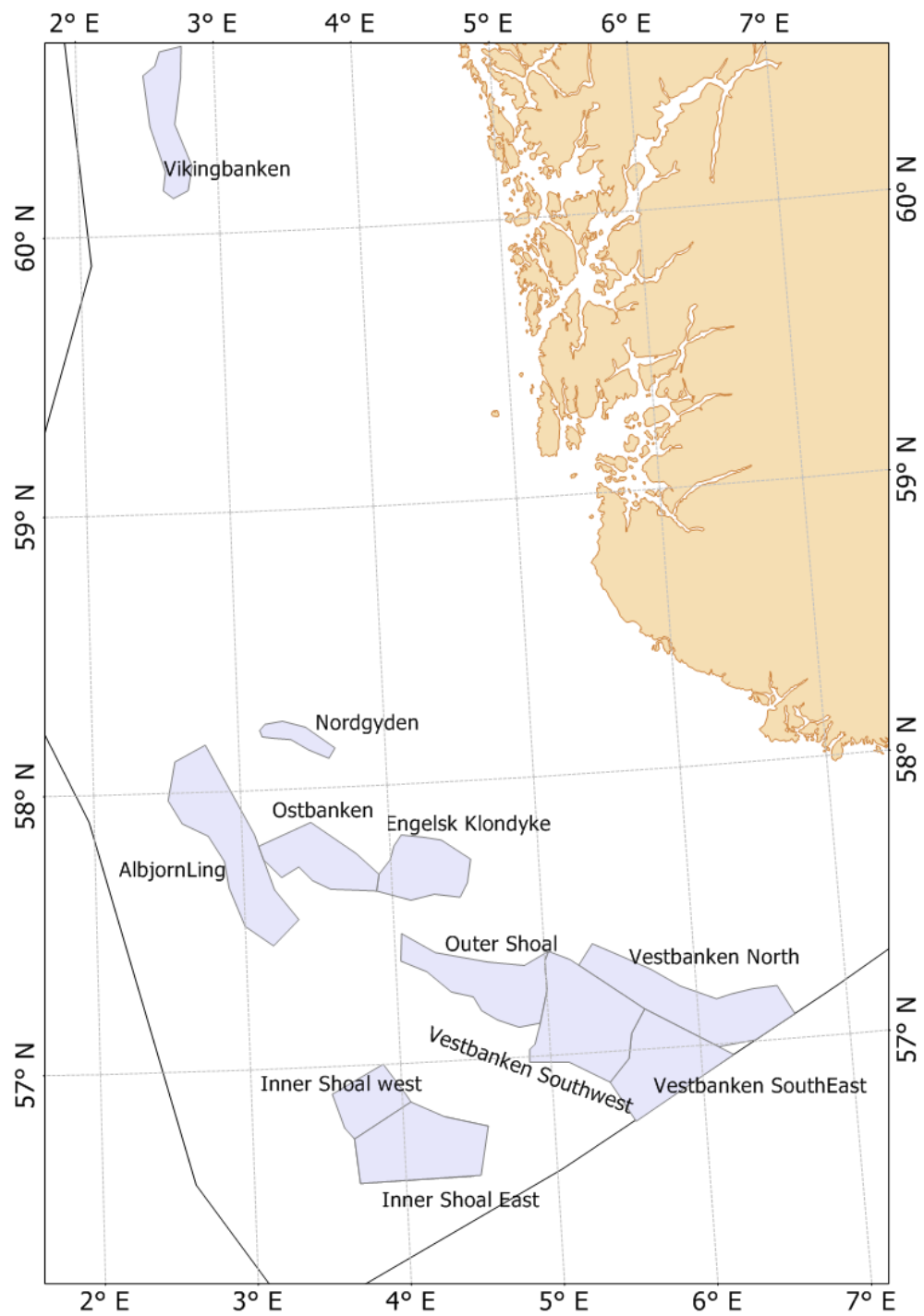


Figure B.3.2.1. Map of the acoustic survey strata.

B.4 Commercial CPUE

Not used for SA3.

B.5 Other relevant data

None

C. Assessment methods and settings

C.1 Choice of stock assess model

The SMS model, presently used for the ICES assessment of blue whiting (WGWIDE), and for the North Sea and Baltic Sea multispecies (WGSAM), was modified slightly to estimate fishing mortality from observed effort. In the original SMS version, fishing mortality, $F_{y,q,a}$ was modelled as an extended separable model including a seasonal, age and year effect. The new version substitutes the year effect by observed effort.

$$F_{y,q,a} = \text{SesonEffect}(Y,A1) * \text{AgeEffect}(Y,A2,q) * \text{YearEffect}_y \quad (1, \text{ original version})$$

$$F_{y,q,a} = \text{SesonEffect}(Y,A1) * \text{AgeEffect}(Y,A2,q) * \text{Effort}_{y,q} \quad (2, \text{ new version})$$

where

indices $A1$ and $A2$ are groups of ages, (e.g. ages 0, 1–2, 3–4) and Y is grouping of years (e.g. 1983–1998, 1999–2009). The SMS-effort defines that the years included in the model can be grouped into a number of period clusters (Y), for which the age selection and seasonal selection are assumed constant. Fishing mortality is assumed proportional to effort. The grouping of ages for age selection, $A1$, and season selection, $A1$, can be defined independently. During benchmark assessments, new period clusters are added if necessary. Period clusters are selected based on (1) changes in fleet composition and spatial coverage, (2) the AIC for model comparison, and (3) Chi-square method for testing if any improvement in model neg. log likelihood values were statistically significant ($\alpha=0.01$). The break points sometimes caused distinct jumps in the exploitation patterns between blocks.

There are two additional options for the SMS-effort version (none of which is currently used), where technical creeping is taken into account.

$$F_{y,q,a} = \text{SesonEffect}(Y,A1) * \text{AgeEffect}(Y,A2,q) * \text{Effort}_{y,q} * (y - \text{firstYear})^{\text{commonCreep}(Y)} \quad (3)$$

$$F_{y,q,a} = \text{SesonEffect}(Y,A1) * \text{AgeEffect}(Y,A2,q) * \text{Effort}_{y,q} * (y - \text{firstYear})^{\text{ageCreep}(Y,A1)} \quad (4)$$

Equation (3) uses a common creeping exponent for all ages by one or more year clusters (Y), e.g. the efficient increase by 3.8% per year in the first year range, and 2.8% per year in the second. Equation (4) is more flexible as it allows an age dependent creeping exponent. If we assume that we only use one year cluster (the whole year range) an example could be that the technical creep for age 1 is 5.5% per year, while age 2 has a negative exponent, -2.7% (equivalent to parameter=0.973). As the product of effort and “technical creep” express both the fishing power and the directivity towards a specific age group, such an example indicates that there has been an overall increase in (standardised) fishing power, but the fishery has been less directed towards older sandeel in recent years.

SMS is a statistical model where three types of observations are considered: Total international catch-at-age; research survey cpue (and stomach content observations, which are not used here). For each type a stochastic model is formulated and the likelihood function is calculated. As the three types of observations are independent the total log likelihood is the sum of the contributions from three types of observations. A stock-recruitment (penalty) function is added as a fourth contribution.

Catch-at-age

Catch-at-age observations are considered stochastic variables subject to sampling and process variation. Catch-at-age is assumed to be lognormal distributed with log mean equal to log of the standard catch equation The variance is assumed to depend on age

and season and to be constant over years. To reduce the number of parameters, ages and seasons can be grouped, e.g. assuming the same variance for age 3 and age 4 in one or all seasons. Thus, the likelihood function, L_C , associated with the catches is

$$L_{CATCH} = \prod_{a,y,q} \frac{1}{\sigma_{CATCH\ a,q} \sqrt{2\pi}} \exp\left(-\frac{(\log(C_{a,y,q}) - E(\log(C_{a,y,q})))^2}{2\sigma_{CATCH\ a,q}^2}\right)$$

Where

$$E(\log(C_{a,y,q})) = \log\left(\frac{F_{a,y,q}}{Z_{a,y,q}} N_{a,y,q} (1 - e^{-Z_{a,y,q}})\right)$$

Leaving out the constant term, the negative log-likelihood of catches then becomes:

$$l_{CATCH} = -\log(L_{CATCH}) \propto \sum_{a,q} NOY \log(\sigma_{CATCH\ a,q}) + \sum_{a,y,q} (\log(C_{a,y,q}) - E(\log(C_{a,y,q})))^2 / (2\sigma_{CATCH\ a,q}^2)$$

Survey indices

Similarly, the survey indices, $cpue(survey, a, y, q)$, are assumed to be log-normally distributed with mean

$$E(\log(CPUE_{survey, a, y, q})) = \log(Q_{survey, a} \bar{N}_{SURVEY\ a, y, q})$$

where Q denotes catchability by survey and \bar{N}_{SURVEY} mean stock number during the survey period. Catchability may depend on a single age or groups of ages. Similarly, the variance of $\log cpue$, $\sigma(survey, a)$, may be estimated individually by age or by clusters of age groups. The negative log likelihood is on the same form as for catch observations:

$$l_{SURVEY} = -\log(L_{SURVEY}) \propto \sum_{survey, a} NOY_{survey} \sum_{survey, a} \log(\sigma_{SURVEY\ survey, a}) + \sum_{survey, a, y} (\log(CPUE_{survey, a, y}) - E(\log(CPUE_{survey, a, y})))^2 / (2\sigma_{SURVEY\ survey, a}^2)$$

Stock-recruitment

In order to enable estimation of recruitment in the last year for cases where survey $cpue$ and catch from the recruitment age is missing (e.g. saithe) a stock-recruitment relationship $R_y = R(SSB_y | \alpha, \beta)$ penalty function is included in the likelihood function. Assuming that recruitment takes place at the beginning of the third quarter of the year and that recruitment is lognormal distributed the parameters the log penalty contribution, l_{SR} , equals

$$l_{SR} = -\log(L_{SR}) \propto \sum_y NOY \log(\sigma_{SR}) + \sum_y ((\log(N_{a=0, y, q=3}) - E(\log(R_y)))^2 / 2\sigma_{SR}^2)$$

where

$E(\ln(R_y)) = \ln(\alpha SSB_y \exp(-\beta SSB_y))$ for the Ricker case. Other stock-recruitment relations (Beverton and Holt and "Hockey stick") and stock-independent geometric mean recruitment have also been implemented. As indicated in equation (26) recruitment-at-age zero in the beginning of the third quarter was considered.

Total likelihood function and parameterisation

The total negative log likelihood function, l_{TOTAL} , is found as the sum of the four terms:

$$l_{TOTAL} = l_{CATCH} + l_{SURVEY} + l_{STOM} + l_{SR}$$

Initial stock size, i.e. the stock numbers in the first year and recruitment over years are used as parameters in the model while the remaining stock sizes are considered as functions of the parameters.

The parameters are estimated using maximum likelihood (ML) i.e. by minimizing the negative log likelihood, l_{TOTAL} . The variance/covariance matrix is approximated by the inverse Hessian matrix. The variance of functions of the estimated parameters (such as biomass and mean fishing mortality) has been calculated using the delta method.

The SMS model was implemented using the AD Model Builder (ADMB Project 2009), freely available from ADMB Foundation (www.admb-project.org). ADMB is an efficient tool including automatic differentiation for Maximum likelihood estimation of many parameters in nonlinear models.

Settings of the SMS model is implicated in the Text Table 1 and the configuration file for Area 1 in Appendix AA.

C.2 Model used of basis for advice

C.3. Assessment model configuration

Table C.3.1.1 Model Configurations

Type	Name	Year range	Age range	Variable from year to year Yes/No
Caton	Catch in tonnes	Is not used as input		
Canum	Catch-at-age in numbers	1983-	0-4+	Yes
Weca	Weight-at-age in the commercial catch	1983-	0-4+	Yes
West	Weight-at-age of the spawning stock at spawning time.	Same values as Weca		
Mprop	Proportion of natural mortality before spawning	1983-	0-4+	No
Fprop	Proportion of fishing mortality before spawning	Is assumed to be 0		
Matprop	Proportion mature at age	Is assumed to be 0		
Natmor	Natural mortality	1983-	0-4+	Yes (sliding three year average)

The SMS model estimates exploitation patterns and the relationship between F and effort with predefined period clusters of years (the separability assumption of the model; see also method description above). For example, prior to the benchmark assessment, the model for SA1 applied 1989 and 1999 as the breakpoints between period clusters. During the benchmark assessment, additional breakpoints were added in 2005 and 2010. Break points were (1) selected based on changes in fleet composition and spatial coverage, (2) the AIC for model comparison, and (3) Chi-square method for testing if any improvement in model neg. log likelihood values were statistically significant ($\alpha = 0.01$). The break points sometimes caused distinct jumps in the exploitation patterns between period clusters. The SESAM model, which was run exploratively for SA1 prior to the 2016 benchmark meeting, confirmed stock dynamics and the dynamic exploitation patterns emerging from the SESAM model to some extent mimicked the discrete changes in exploitation pattern in the SMS model.

Model settings was changed slightly as part of an IBP in January 2020 in order to reduce the retrospective bias. The change involved implementing a power function for the age 0 catchability in the IBTS Q1 survey. This feature was introduced to account for a potentially higher catchability of younger ages during high recruitment events.

The equation would then be:

$$E(\log(CPUE_{survey,a,y})) = \log(Q_{survey,a} (\bar{N}_{SURVEY a,y})^{P_{a1}})$$

Where P is an exponent applied to the younger age group in the survey. For more details about the rationale for making the change and how it affected the model output, please see the IBP-report.

D. Short-term prediction

Model used: Deterministic forecast

Software used: R

Initial stock size: Numbers at age projected by the assessment model. The majority of catches consist of age-1 fish in most years. The forecast is therefore highly reliant on the survey index for age-0 fish, which provide information about the size of the age-1 year class in the forecasted fishing season.

Maturity: Same as used in the input for the assessment model (assumed constant between years)

F and M before spawning: Assumed to be 0

M: Natural mortality is taken from the final year, which is already a 3 year average

Weight-at-age in the stock: 5 year average

Weight-at-age in the catch: 5 year average

Exploitation pattern: Taken from the last year in the assessment model (which is constant for the last cluster period in the model (see, description of assessment model above)

Intermediate year assumptions: None

Stock recruitment model used: None. Instead the long-term geometric mean recruitment is assumed

Procedures used for splitting projected catches: None

Other: During MYREF2 it was evaluated to what extent the Bescapement approach (using Bpa as target) is sustainable according to the criteria put forward by ICES. The conclusion was that the approach is only sustainable if an upper level on F is applied (Fcap). This upper level is needed to ensure that the stock is not overexploited in years where the log-normal uncertainty of the incoming years class is not fully accounted for by the Bpa buffer (for example in years, where the dredge survey indicate a very large recruitment). Until now an Fcap of 0.6 has been applied to SA3. However, this value should be re-estimated to take into account the changes made for the new SA3.

E. Medium-term prediction

Not produced for this stock

F. Long-term prediction

Not produced for this stock

G. Biological reference points

	TYPE	VALUE	TECHNICAL BASIS
MSY	MSY Btrigger	129 000 t	Equal to Bpa (B-escapement strategy)
Approach	FMSY	Not defined	B-escapement strategy
	Blim	80 000 t	From stock recruitment relationship
Precautionary	Bpa	129 000 t	From Blim and CV of SSB in the final assesment year
Approach	Flim	Not defined	
	Fpa	Not defined	

H. Other issues – Note: This section is to be completed during HAWG 2017

H.1 Biology of species

H.2 Overview of the assessments

Years	Area division	WG	Model	Years modelled
1998-2010	Total IV, no assessment in 3a	WGNSSK	SXSA	1976-2010
2011-2012	Area based, areas 1-3	WGNSSK	SMS	1982-2012
2013-2016	Area based, areas 1-3	HAWG	SMS	1982-2012
2017-2020	Area based, areas 1r, 2r, 3r, 4	HAWG	SMS	1982-2012

H.3 Current fisheries

See section A.2.1

H.4 Management and advice

See section A.2.2

H.5 Others (e.g. age terminology)

None.

H.6 References

- Christensen, A., Jensen, H., Mosegaard, H., St.John, M., and Scrum, C. 2008. Sandeel (*Ammodytes marinus*) larval transport patterns in the North Sea from an individual-based hydrodynamic egg and larval model. *Can. J. Fish. Aquat. Sci.* 65: 1498–1511 (2008)
- Ohlberger and Hilborn, 2016. Project report: CPUE standardization and analysis of spatial-temporal trends in catch and effort of the Danish sandeel fishery. School of Aquatic and Fishery Sciences, University of Washington, Seattle, WA 98195, USA. May 2016. 24p plus 6 Annexes. ICES benchmark 2016, working document.
- ICES 1995. Report of the working group on the assessment of Norway pout and Sandeel. ICES C.M.1995/Assess:5
- ICES 1996. Report of the working group on the assessment of demersal stocks in the North sea and Skagerrak. ICES CM 1996/Assess:6
- ICES 2008. Report of the Working Group on Multispecies Assessment Methods (WGSAM). ICES CM 2008/RMC:06
- ICES 2011. Report of the Working Group on Multispecies Assessment Methods (WGSAM). ICES CM 2011/SSGSUE:10
- ICES 2015. Report of the Working Group on Multispecies Assessment Methods (WGSAM). ICES CM 2015/SSGEPI:20