

COOPERATIVE RESEARCH REPORT

Series A, No. 30

REPORT OF THE MEETING OF THE WORKING GROUP ON ATLANTO-SCANDIAN HERRING

Copenhagen, 12 - 13 January 1971

Appendix to previous Report: Coop. Res. Rep., Ser. A, No. 17, 1970

<https://doi.org/10.17895/ices.pub.8042>

ISBN 978-87-7482-722-1

ISSN 2707-7144

International Council for the Exploration of the Sea

Charlottenlund Slot, 2920 Charlottenlund

Denmark

April 1972

Table of Contents

	<u>Page</u>
<u>Introduction</u>	2
A. Terms of reference and participation	2
B. Material and agenda	2
I. <u>Description of stock units in the Atlanto-Scandian herring</u>	3
II. <u>Norwegian spring spawners</u>	
II.a <u>The adult herring fisheries</u>	
A. Total catch	3
B. Effort	3
C. Age composition	4
D. Estimates of absolute stock abundance ...	4
E. Mortality rates	4
II.b <u>The immature herring fisheries</u>	4
II.c <u>Changes in the migration pattern</u>	6
III. <u>The Icelandic herring stocks</u>	7
IV. <u>Causes of the recent decline in the yields of the Atlanto-Scandian herring</u>	7
V. <u>References</u>	8
<u>Tables 1 - 23</u>	9
<u>Figures 1 and 2</u>	26

Introduction

A. Terms of reference and participation

In view of the continued decline of the Atlanto-Scandian herring stocks it was decided during the ICES Meeting in 1970 that the Working Group on Atlanto-Scandian Herring should meet again in order to compile new data and information on these stocks (C.Res.1970/2:8).

The Working Group met on 12 and 13 January 1971 in Charlottenlund Castle with the following scientists participating:-

Mr J Jakobsson, Chairman	Iceland
Mr O V Bakurin,	U.S.S.R.
Mr A C Burd	U.K.
Dr O Dragesund	Norway
Dr S S Fedorov	U.S.S.R.
Mr K Høydal	Faroes
Mr E Jónsson	Iceland
Mr K Popp Madsen	Denmark
Mr J J Zijlstra	Netherlands.

Mr J Møller Christensen, Secretary of the Liaison Committee, also attended the meeting.

B. Material and Agenda

The Working Group decided that the present report could only be considered as an appendix to its previous report (ICES, 1970), and that according to the terms of reference the Group would add all new available data to the various sections and tables in the previous report. In addition the Working Group decided to attempt new calculations on data from the small- and fat-herring catches in order to elucidate further the effect of this fishery on the Norwegian spring spawners.

The numbering of each section and of the tables in this report corresponds to that of the previous report. Also tables, where no new data could be added have been reproduced. Tables 22 and 23 are new.

I. Description of stock units in the Atlanto-Scandian herring

The Working Group found that there was no need to add anything to the description given in its previous report (ICES, 1970) under this section.

II. Norwegian spring spawners

II.a The adult herring fisheries

A. Total catch

Tables 1 to 3 show the catches of adult and pre-recruit Norwegian spring spawning herring during the period 1950-1970. The catch figures for 1969 and 1970 show that the decline which started in 1967 has continued. Thus the total summer and autumn catch which in 1965-1966 amounted to about 1 million tons was only 3 600 tons in 1969 and in 1970 the summer and autumn catch was practically nil (Table 1). The winter herring fishery decreased to 20 500 tons in 1969. In 1970 this fishery was also very low, being 20 900 tons. Consequently the total catch of Norwegian spring spawners which during the peak years in 1965-1967 amounted to some 1.5 million tons was reduced to about 20 000 tons during the two previous years. Figure 1 illustrates how the stock size as well as the total catch have decreased in the last few years while the small- and fat-herring fishery's proportion of the total catch has rapidly increased.

B. Effort

Table 4 shows that the total number of vessels participating in the herring fisheries based on Norwegian spring spawners has decreased drastically in recent years. Thus the number of participating Norwegian purse-seiners was 418 in 1967 but in 1969 and 1970 there were 128 and 129 respectively. The number of Icelandic purse-seiners was reduced from 139 in 1967 to 25 in 1969 and nil in 1970.

Similarly the Soviet drifter fleet decreased from 342 in 1967 to 79 in 1969 and nil in 1970. At its meeting in 1969 the Working Group decided to use Soviet drifter units for effort and catch per effort estimates. Since this fishery was completely stopped in 1970, only estimates for 1969 could be added to Tables 5 and 6. The total effort in drift-net units which in 1967 was about 20 millions was in 1969 reduced to about 1 million nets or less.

C. Age composition

The percentage age composition as presented in Tables 7 and 8 shows that the catches in 1969 and 1970 are based on the same year classes as in say 1966-1968. Thus the year classes from 1959, 1960 and to some extent from 1961 are still the predominant ones there being no sign of increased recruitment to the adult stock. It is of special interest to note that the year classes from 1963 and 1964 which according to the 0-group surveys were of average strength and gave rise to rich immature fishery in 1965-1968 are quite negligible in the age composition of the adult stock.

D. Estimates of absolute stock abundance

Unfortunately there were no new estimates available of absolute stock abundance. As a result of the small catches in recent years practically no adult herring has been used for reduction purposes and hence tagging returns have been negligible. In spite of repeated attempts Soviet scientists have not been able to carry out their stock estimates based on echo-surveys because herring concentrations could not be located for this purpose. In the absence of new estimates the Working Group decided not to attempt extrapolation of older data for this purpose although such methods could give some rough estimates of absolute stock abundance (probably about 0.7 million tons in 1970 assuming no changes in M).

It is of interest to note that the fluctuations of the Soviet catch per drift net during February as presented in Table 5 correspond to those of the absolute stock abundance estimates based on tagging data or echo-surveys. Therefore it is possible to consider the catch per unit effort of the Soviet fleet during February as a stock abundance index completely independent from the other two presented in Table 16.

E. Mortality rates

Owing to the complete breakdown of the fisheries in recent years it has become impossible to calculate comparable mortality rates for the adult Norwegian spring spawners.

II.b The immature herring fisheries

In the former report (ICES, 1970) attention was drawn to the probable serious effect of the increased exploitation rate on fat herring.

With more extensive data available it has been possible to make new estimates of the numbers of herring in the small- and fat-herring catches. These estimates are now based on revised age distributions and on relevant mean weights per age group per season (Table 19). A revised set of abundance indices of 0-group herring is also included in the table. With the revisions in catches, changes in the exploitation rates of both small and fat herring occurred. These are shown in Figure 2 and indicate an increasing rate of exploitation in the small-herring fisheries. In the fat-herring fishery, however, the exploitation dropped after the very high levels on the 1963 and 1964 year classes but increased again on the most recent year classes.

In its previous report (ICES, 1970) the Working Group drew attention to the probable reduction in recruitment to the adult stock of the 1963 and 1964 year classes. The present Working Group has examined the problem in more detail. An attempt has been made to compare the stock size in numbers as 3 year olds (the fat herring stage) with the catches in number from the fat-herring fisheries. The stock sizes of a number of year classes have been compared with the abundance indices of these classes as 0-groups.

From the data in Table 9 the catches in number of 6-8 year olds have been taken as indices of fully recruited herring. Using estimates of F derived from Tables 13 and 16 stock sizes in number for the 1959-1962 year classes have been calculated for the year of assumed full recruitment using

$$C = S \cdot \frac{F}{Z} (1 - e^{-Zt})$$

A value of $M = 0.15$ has been assumed (ICES, 1970) for all ages down to age 3 the herring being then over 20 cm. Previous years' stock levels of a year class were derived from the relation:-

$$S_{n-1} = S_n \cdot e^M + C_n$$

The maximum estimates of year class strength derived by this method are shown in Table 22, where they are compared with the estimates of the same year classes as 0-group herring derived from echo-sounding techniques (Dragesund, 1970). It is seen that there is good agreement in the

relative year class strength for all except the 1962 year class. This year class was very weak in the adult catches but was heavily exploited as small herring (ICES, 1970).

Assuming that the 0-group abundance (Dragesund and Nakken, 1970) are comparable over the whole period to 1969¹⁾, it is possible to make estimates of the potential stock sizes of the year classes as 3 year old fish from the ratios given in Table 19 (column a). These estimates are given in Table 23 (column a) together with the fat herring catches of each year class in number. Considering the year classes 1959-1961 the exploitation rate in the fat herring stage, and not including the small herring, would appear to have varied between about 10-50%.

It can be seen that in some year classes the numbers of herring caught in the fat-herring fishery approach or exceed the total stock estimate given by back calculation. In view of the assumption made on mortality coefficients in the adult herring and the low sampling rate in the fat-herring fisheries relative to their complicated nature, these results are well within the range of expectancy. They imply that the fat-herring fishery practically annihilated the 1963 and 1964 year classes as was tentatively suggested in the previous report (ICES, 1970).

Dragesund (1970) using a different technique on the 1963 year class came to the same conclusion. The failure of the 1963 and 1964 year classes to recruit to the adult fisheries as shown in Table 9 could thus be consequent to the exploitation of the juvenile herring.

II.c Changes in the migration pattern

The recent drastic changes in migration pattern of the Norwegian spring spawners were schematically shown on Charts 1-3 of the previous report (ICES, 1970). In addition to these changes in migration pattern the shoaling behaviour of the Norwegian spring spawners has changed drastically during the last few years. Thus instead of assembling into dense over-wintering concentrations the herring has since 1968 been widely scattered. This holds true for practically the whole year with very sporadic and infrequent exceptions.

1) According to Norwegian information given at the ICES Statutory Meeting 1971, the 0-group estimate of the 1969 year class may be an underestimate due to increased southern component of this year class.

III. The Icelandic herring stocks

The report of the Working Group on Atlanto-Scandian Herring (ICES, 1970) dealt with the catch statistics of the Icelandic herring stocks during the period 1957-1967. In Table 20 these are extended to 1970. The catch during the last few years has been very low as expected or about 20 000 tons per year. The regulations described in the previous report (ICES, 1970; see also Jakobsson, 1969) are still in force and the fishing effort is thus greatly reduced as compared with the earlier years of unrestricted fisheries. Since practically no herring has been used for reduction purposes in Iceland since 1967, estimates of absolute abundance based on tagging data are not available for the last three years. At present, data on stock abundance are therefore not available for 1968-1970 but recent trends in age composition (Jakobsson, Annls.biol., Copenh., 25:147 and 26:165) tend to indicate a decrease in annual total mortality which is probably due to less fishing intensity than before. There can, however, be no doubt that the abundance of the Icelandic stocks is still at a very low level.

IV. Causes of the recent decline in the yields of the Atlanto-Scandian herring

The Working Group found that the development in 1969 and 1970 of the herring fisheries based on adult Norwegian spring spawners confirmed the statement made in the previous report (ICES, 1970), that the causes for the recent drastic decline in these fisheries are primarily due to lack of recruitment since there has been practically no recruitment to the adult stock since the 1959-1961 year classes were fully recruited in 1966. This decline of the stock was accelerated by higher exploitation rate in recent years, especially during the period 1965-1967. Since 1968 the low availability of the herring has caused a sharp decline in effort due to diversion to other stocks. To some extent this has probably resulted in a lower exploitation rate in the adult stock during the last three years.

As regards recruitment to the adult stock in the coming years, the results from the Norwegian and international echo-surveys show that the 1962 and 1965-1970 year classes are all very poor. The 1963 and 1964 year classes, which were estimated to be of reasonable strength as 0-group fish were so heavily exploited in the fat herring stage that

their recruitment to the adult stage has been negligible. Similarly, the exploitation rate of the 1969 year class as fat herring appears to be very high or at about the same order as the 1963 and 1964 year classes. The other small year classes in recent years (1965-1968) have probably not suffered such a high exploitation rate in the fat herring stage but in contrast they were exploited more heavily in the small herring stage. Thus the recruitment to the adult stock from the poor year classes in recent years (1965-1969) is expected to be almost nil. At present the Norwegian spring spawning stock of herring appears to be in a phase of very low reproductive potential.

In view of the present critical state of the stock it would be advisable in order to maximize recruitment and safeguard the continued existence of the Norwegian spring spawning stock to keep the exploitation rate of small and fat herring at a much lower level than in recent years. The adjustment of this exploitation rate should be made relative to the independent estimates of year class strength derived from 0-group surveys rather than by arbitrary catch adjustment.

V. References

- DRAGESUND, O., 1970. Distribution, abundance and mortality of young and adolescent Norwegian spring spawning herring (Clupea harengus Linné) in relation to subsequent year class strength. Fisk.Dir. Skr., Ser.Havunders., 15:451-556.
- DRAGESUND, O. and NAKKEN, O., 1970. Relationship of parent stock size and year class strength in Norwegian spring spawning herring. ICES Symp. "Stock and Recruitment", Doc.No.20 (mimeo). (Also Rapp. P.-V., Cons.int.Explor.Mer, 164 (in press)).
- ICES, 1970. Report of the Working Group on Atlanto-Scandian Herring, 21-25 April 1969. ICES Coop.Res.Rep., Ser.A, No.17.
- JAKOBSSON, J., 1969. On the Icelandic herring stocks and their exploitation. ICES, C.M.1969/H:13 (mimeo).

Table 1. Summer and autumn fishery (Norwegian spring spawners).

Catch (in thousands of tons)
of adult non-spawning herring 1950 - 1970.

Year	Iceland	Norway	USSR	Faroes	Germany	Total
1950	30.7	10.1	14.0	-	-	54.8
1951	48.9	14.3	41.7	-	-	104.9
1952	9.2	19.6	61.0	-	-	89.8
1953	31.5	22.1	101.5	16.2	-	171.3
1954	15.2	11.4	133.3	27.4	-	187.3
1955	18.1	13.9	168.2	12.9	-	213.1
1956	41.2	14.8	188.8	23.0	-	267.8
1957	18.2	17.5	239.9	16.2	-	291.8
1958	22.6	11.4	306.1	15.8	-	355.9
1959	34.5	10.5	314.9	13.0	-	372.9
1960	26.7	18.3	365.7	9.4	-	420.1
1961	85.0	42.0	207.7	16.9	-	351.6
1962	176.2	72.1	159.6	9.8	-	417.7
1963	177.5	68.9	278.7	12.9	-	538.0
1964	367.4	80.1	231.9	18.3	-	697.7
1965	540.0	33.1	324.4	31.5	5.6	934.6
1966	691.4	37.0	296.6	44.0	22.7	1 091.7
1967	359.3	52.1	236.2	17.7	7.4	672.7
1968	75.2	30.1	111.3	10.6	1.1	228.3
1969	0.1	0.7	0.5	2.0	0.3	3.6
1970	0.0	0.0	>0.1	0.0	0.0	>0.1

Table 2. Winter fishery. (Norwegian spring spawners).

Catch (in thousands of tons)
of Norwegian winter herring 1950 - 1970.

Year	Norway	USSR	Faroes	Iceland	Germany	Total
1950	771.3	-	-	-	-	771.3
1951	888.0	1.3	-	-	-	889.3
1952	820.5	8.9	-	-	-	829.4
1953	670.1	8.5	-	-	-	678.6
1954	1 092.2	26.7	0.2	-	-	1 119.1
1955	965.4	38.8	0.2	-	-	1 004.4
1956	1 145.9	46.2	0.7	-	-	1 192.8
1957	795.6	60.1	0.8	-	-	856.5
1958	345.3	81.9	1.9	-	-	429.1
1959	416.4	93.1	0.7	-	-	510.2
1960	300.1	99.3	1.6	-	-	401.0
1961	69.6	77.3	-	-	-	146.3
1962	84.1	49.4	-	-	-	133.5
1963	61.5	71.3	-	-	-	132.8
1964	286.3	133.9	-	-	-	420.2
1965	226.4	164.8	-	-	-	391.2
1966	460.9	150.8	16.7	-	3.4	631.8
1967	371.6	67.7	17.2	-	2.3	458.8
1968	25.6	13.0	5.5	-	0.7	44.8
1969	14.9	2.7	2.4	0.5	0.0	20.5
1970	20.3	0.0	0.6	0.0	0.0	20.9

Table 3. Total catch.

Catch (in thousands of tons) of adult and pre-recruit
Norwegian spring spawning herring 1950 - 1970

Year	Iceland	Norway	USSR	Faroës	Germany	Total
1950	30.7	781.4	14.0	-	-	826.1
1951	48.9	902.3	43.0	-	-	994.2
1952	9.2	840.1	69.9	-	-	919.2
1953	31.5	692.2	110.0	16.2	-	849.9
1954	15.2	1 103.6	160.0	27.6	-	1 306.4
1955	18.1	979.3	207.0	13.1	-	1 217.5
1956	41.2	1 160.7	235.0	23.7	-	1 460.6
1957	18.2	813.1	300.0	17.0	-	1 148.3
1958	22.6	356.7	388.0	17.7	-	785.0
1959	34.5	426.9	408.0	13.7	-	883.1
1960	26.7	318.4	465.0	11.0	-	821.1
1961	85.0	111.0	285.0	16.9	-	497.9
1962	176.2	156.2	209.0	9.8	-	551.2
1963	177.5	130.4	350.0	12.9	-	670.8
1964	367.4	366.4	365.8	18.3	-	1 117.9
1965	540.0	259.5	489.2	31.5	5.6	1 325.8
1966	691.4	497.9	447.4	60.7	26.1	1 723.5
1967	359.3	423.7	303.9	34.9	9.7	1 131.5
1968	75.2	55.7	124.3	16.1	1.8	273.1
1969	0.6	15.6	3.2	4.4	0.3	24.1
1970	0.0	20.3	0.0	0.6	0.0	20.9

Table 4. Fleet composition and effort estimates

Year	Norway		Iceland			USSR				
	Purse-seiner	Drift net	Purse-seiner	No. of days in action	Average tonnage	Drift net				Purse-seiner
						Winter season		Summer season		
						No. of boats	Total no. of nets shot (in millions)	No. of boats	Total no. of nets shot (in millions)	
1954	492	1 450	-	-	-	188	0.94	199	2.40	-
1955	549	1 435	132	-	-	231	1.26	253	2.90	-
1956	561	1 321	187	-	-	273	1.49	293	3.58	-
1957	599	1 408	234	-	-	400	2.36	372	4.12	-
1958	593	1 413	241	-	-	436	2.73	380	4.57	-
1959	564	1 297	224	-	-	491	2.83	410	4.18	-
1960	439	1 162	258	-	-	524	4.25	244	3.30	-
1961	254	789	215	-	-	455	3.26	251	3.19	-
1962	197	-	224	16 761	99	302	2.68	164	1.26	-
1963	214	-	226	19 697	109	344	3.27	184	2.51	-
1964	268	-	233	22 507	183	384	3.08	187	2.12	-
1965	318	-	189	31 176	145	488	3.91	107	0.95	-
1966	382	-	191	33 089	181	484	4.16	92	1.23	7
1967	418	-	139	23 397	220	342	3.97	43	0.58	19
1968	397	-	80	7 500	280	137	1.73	10	0.21	69
1969	128	-	25	500	280	79	0.11	0.0	0.0	12
1970	129	-	0	0		0	0	0	0	0

Table 5. Catches per effort of the USSR drift-net fishery.

(a. From the annual catch. b. From the February catch = spawning fishery only).

Year	a.	b.
	Catch per drift net (total catch) kg	Catch per drift net (February catch) kg
1958	53.5	131.0
1959	63.3	132.0
1960	60.2	115.2
1961	44.4	76.0
1962	57.3	56.1
1963	61.6	87.2
1964	66.4	108.0
1965	94.4	113.5
1966	79.0	115.0
1967	56.3	55.3
1968	28.3	26.3
1969	24.2	38.9
1970	0.0	0.0

Table 6. Estimates of total effort in drift-net units.

Year	Total number of nets in millions	Total number of nets in millions
	(Total catch)	(February only)
1958	14.65	6.0
1959	13.95	6.70
1960	13.64	7.13
1961	11.21	6.55
1962	9.62	9.83
1963	10.56	7.46
1964	19.84	10.35
1965	14.04	11.68
1966	21.68	14.89
1967	20.09	20.45
1968	9.11	9.77
1969	1.0	0.63
1970	-	-

Table 7. Percentage age composition 1950-1970. Norwegian winter fishery.

Year Age	1950	1951	1952	1953	1954	1955	1956	1957	1958	1959	1960	1961	1962	1963	1964	1965	1966	1967	1968	1969	1970
2	.1	-	.1	.1	.1	-	-	.2	-	-	-	-	-	-	-	-	-	-	-	-	-
3	8.3	.2	1.3	4.0	1.3	1.5	.6	.4	.5	.4	-	-	.1	-	.2	-	-	-	-	-	0.3
4	5.5	11.6	2.0	1.9	25.2	6.3	5.0	7.4	1.0	1.3	.3	.4	-	6.9	5.9	5.2	.1	.2	-	0.1	1.8
5	5.5	5.2	19.9	4.1	3.3	46.9	5.9	4.3	6.1	1.4	1.6	.9	.5	.4	60.6	13.6	8.8	.4	.7	-	0.4
6	16.3	4.8	4.5	14.4	5.4	2.7	50.6	5.6	4.7	7.5	1.2	3.3	.9	.4	.3	66.3	28.9	12.8	1.3	3.3	0.6
7	18.7	15.2	6.7	3.2	11.0	4.3	2.3	56.5	6.6	5.1	6.5	2.9	2.5	.5	.1	.1	54.5	33.7	12.1	0.8	4.4
8	2.3	17.7	12.4	4.2	2.8	5.8	3.9	1.8	50.5	7.8	3.5	7.7	1.5	1.7	.2	.2	.2	48.5	35.0	13.2	1.3
9	2.5	2.0	12.2	12.0	4.2	1.7	4.6	2.6	2.6	47.3	5.0	4.8	8.0	1.0	.8	.1	.1	.2	47.7	38.2	17.0
10	3.1	2.2	2.4	14.4	9.2	4.0	2.2	2.4	3.5	2.2	58.1	6.5	4.0	8.6	.5	.3	.1	-	.1	41.6	35.2
11	2.4	2.6	2.5	2.0	9.5	5.5	3.5	1.6	3.4	3.3	1.6	59.0	6.6	3.6	3.4	.5	.2	.1	-	-	37.9
12	5.4	2.7	3.1	2.8	1.7	3.3	4.1	2.2	2.3	4.5	3.8	4.4	63.5	8.2	1.8	1.4	.2	.3	.2	0.3	0.1
13	10.4	6.7	3.0	2.9	1.9	1.0	1.9	2.7	2.2	1.9	4.1	3.0	2.1	60.0	2.6	.8	.6	.2	.2	0.1	0.1
14	1.6	9.1	5.0	3.0	2.5	1.4	.9	1.5	1.8	2.3	1.5	2.3	3.6	2.0	20.9	1.3	.6	.5	.3	0.3	0.1
15	2.7	1.5	7.0	6.6	2.2	1.8	1.2	.5	1.1	2.2	1.0	1.5	3.4	2.7	.6	9.2	.4	.3	.5	-	0.1
16	4.8	3.0	1.6	7.0	3.4	1.9	1.4	.6	.6	.9	1.3	1.4	0.7	2.0	.7	.3	5.0	.3	.4	0.2	0.1
17	1.1	4.0	2.2	2.2	4.3	2.2	1.7	.8	.7	.5	.9	.9	1.0	.8	1.1	.3	-	2.5	-	0.3	0.2
18	.5	.4	3.4	2.9	1.7	1.3	1.6	1.0	.7	.7	.5	.3	1.0	.5	.1	.3	-	-	1.4	0.1	0.2
19	-	.2	.8	2.9	1.4	1.5	.6	.7	.5	.4	.3	.4	.3	.4	.1	-	.3	-	-	1.3	-
20	.1	-	.1	.7	1.0	.7	.6	.3	.3	.3	.5	.1	-	.2	.1	-	-	-	-	-	0.3
21	-	.1	-	.1	.1	.2	.3	.2	.2	.2	.3	.1	.2	-	-	.2	-	-	-	-	-
22	-	-	-	-	.1	.1	.1	-	-	.1	.1	.1	-	-	-	-	-	-	-	-	-
>22	-	-	-	-	-	-	-	-	-	.1	.1	-	.1	.1	-	-	-	-	-	-	-
?	8.6	10.8	9.8	8.6	7.8	5.9	7.0	6.6	10.6	10.0	7.8	-	-	-	-	-	-	-	-	-	-
n =	3 973	3 841	3 336	2 796	4 839	4 174	4 998	2 779	972	1 116	1 155	452	398	399	1 481	1 402	2 531	1 599	2 255	2 207	3 511

Table 8. Age compositions 1962 - 1969 in %.

a) Iceland - summer

Year Age	1962	1963	1964	1965	1966	1967	1968	1969
1	-	-	-	-	-	-	-	-
2	3.4	0.3	0.1	1.5	-	-	-	-
3	17.4	2.3	4.0	0.4	2.7	0.1	0.1	-
4	0.1	22.9	10.1	5.8	0.8	1.2	0.2	0.3
5	0.0	0.2	46.8	12.7	7.9	1.1	2.4	0.6
6	0.2	0.0	0.4	42.3	18.7	11.6	2.1	3.1
7	0.7	0.1	0.0	0.6	49.8	31.8	13.0	5.8
8	0.5	0.7	0.0	0.4	1.1	50.3	31.4	14.8
9	2.2	0.9	0.6	0.2	0.4	0.3	47.2	29.2
10	3.0	4.4	1.0	0.5	0.5	0.3	0.3	43.7
11	7.7	4.7	2.1	1.1	0.7	0.1	0.2	0.3
12	48.2	8.5	2.6	2.7	1.2	0.2	0.1	-
13	2.9	41.6	5.2	3.2	1.8	0.3	0.4	-
14	3.4	4.3	21.2	4.0	1.9	0.5	0.4	0.6
15	4.6	3.0	1.7	19.2	2.9	0.5	0.2	0.6
16	1.9	3.3	1.5	2.2	8.9	0.5	0.5	-
17	1.8	1.4	1.5	1.6	0.5	1.3	0.7	-
18	0.8	1.1	0.3	0.9	0.3	0.1	0.6	-
19	0.8	0.3	0.7	0.4	0.2	-	-	0.9
20	0.4	0.1	0.4	0.3	0.1	-	-	-
21	-	-	-	0.2	-	-	-	-
22	0.1	-	-	-	-	-	-	-
n =	2 429	3 190	3 416	4 853	6 103	552	2 935	325

b) USSR - all areas

Year Age	1962	1963	1964	1965	1966	1967	1968	1969
1	-	-	-	-	-	-	-	-
2	4.2	2.2	-	0.5	-	-	+	-
3	46.8	10.2	6.5	0.1	0.7	0.2	+	0.2
4	1.8	66.3	15.5	6.8	0.2	1.4	0.1	0.1
5	2.4	3.1	66.7	20.6	8.7	0.4	2.1	0.7
6	5.2	1.5	1.9	63.9	28.1	9.9	1.4	3.0
7	2.9	1.0	0.6	0.8	56.0	26.5	13.7	3.9
8	4.2	1.6	0.6	0.4	0.6	51.9	34.1	18.6
9	6.2	2.0	0.8	0.7	0.4	0.8	43.6	37.7
10	7.2	2.8	1.0	0.9	0.3	0.3	0.5	31.5
11	7.3	2.7	1.5	1.0	0.4	0.6	0.6	0.9
12	8.5	5.2	0.8	1.3	0.6	0.7	0.7	0.5
13	1.5	0.7	2.5	1.2	0.9	1.1	0.6	0.5
14	0.8	0.5	1.4	1.2	0.9	1.5	0.7	0.6
15	0.5	0.2	0.1	0.5	1.3	1.3	0.7	0.5
16	0.3	-	0.1	0.1	0.7	2.1	0.6	0.7
17	0.1	-	-	+	0.1	1.0	0.5	0.5
18	0.1	-	-	+	+	0.1	0.1	0.1
19	-	-	-	-	0.1	0.1	-	+
20	-	-	-	-	-	0.1	-	-
21	-	-	-	-	-	-	-	+
22	-	-	-	-	-	-	-	-
n =	7 352	11 769	14 046	7 228	8 564	10 269	6 982	3 967

Table 9. Total catch in numbers' of Norwegian spring spawning herring in the adult fisheries (millions)

Year class	Y e a r s								
	1962	1963	1964	1965	1966	1967	1968	1969	1970
1948	64.1	60.6	43.2	52.1	8.8	0.0	0.0	-	-
1949	49.3	79.8	46.1	70.2	14.9	1.9	-	-	-
1950	959.3	932.7	771.6	703.0	392.7	64.3	5.4	1.1	0.2
1951	138.9	174.1	151.9	137.7	96.9	14.3	4.1	0.2	-
1952	59.8	92.5	83.2	106.9	72.1	14.3	3.6	0.3	0.1
1953	64.1	107.7	96.3	100.5	69.1	17.5	1.8	0.2	0.1
1954	13.3	9.3	29.3	40.0	11.0	8.9	2.6	-	0.1
1955	20.2	18.3	24.9	19.1	26.1	8.5	2.5	0.3	0.1
1956	6.5	3.5	3.0	7.4	17.4	3.5	0.8	0.2	0.1
1957	2.0	1.7	1.5	14.9	14.4	5.7	1.1	0.3	0.1
1958	1.4	4.9	13.1	19.5	38.0	8.9	2.0	-	0.1
1959	255.7	408.9	1 917.7	2 195.8	2 868.3	1 718.2	345.9	36.3	28.2
1960	49.8	38.2	307.6	570.4	1 290.6	1 135.0	134.8	33.5	26.7
1961	-	-	90.2	245.9	459.1	422.2	93.9	11.6	13.2
1962	-	-	2.2	12.1	26.5	27.0	14.3	0.7	1.0
1963	-	-	-	45.1	80.6	25.7	15.2	2.9	3.3
1964	-	-	-	-	-	-	-	-	0.4
1965	-	-	-	-	-	-	-	0.2	0.3
1966	-	-	-	-	-	-	-	-	1.3
1967	-	-	-	-	-	-	-	-	0.2
Total	1 684.4	1 932.2	3 581.8	4 340.6	5 486.5	3 475.9	628.0	87.7	75.5

Table 11.*) Estimates of absolute abundance of adult stock
of Norwegian spring spawners 1952/53 - 1967/68
(in million tons)

Years (Winter season)	From tagging data	From echo-surveys and underwater photography
1952/53	12.5	-
1953/54	12.1	-
1954/55	13.9	-
1955/56	12.0	-
1956/57	9.4	-
1957/58	6.6	-
1958/59	5.0	6.0
1959/60	-	-
1960/61	-	3.1
1961/62	-	2.5
1962/63	-	2.8
1963/64	5.0	3.3
1964/65	7.7	6.8
1965/66	6.6	-
1966/67	4.0	-
1967/68	-	2.0

Table 12.*) Mortality rates derived from the Norwegian
drift-net fishery. (Østvedt).

Year-period	Z	Year-period	Z
1950/51	0.23	1955/56	0.15
1951/52	0.18	1956/57	0.32
1952/53	-0.04	1957/58	0.18
1953/54	-0.07	1958/59	-0.03
1954/55	0.69	1959/60	0.46
Mean	0.20	Mean	0.22

*) Reproduced from the previous report (ICES, 1970)
without amendments.

Table 13.*) Instantaneous mortality coefficients.

(a) From total catch per effort.

(b) From winter catch per effort.

Years	Recruitment at 6 years		Recruitment at 7 years	
	(a)	(b)	(a)	(b)
1962/63	0.08	-0.31	0.08	-0.31
1963/64	0.58	0.46	0.58	0.46
1964/65	-0.18	0.11	-0.18	0.12
1965/66	0.39	0.20	0.94	0.76
1966/67	0.42	0.81	0.59	0.98
1967/68	0.95	1.18	0.99	1.26
Mean 1962/65	0.16	0.09	0.16	0.09
Mean 1965/68	0.59	0.73	0.64	1.00
Grand mean	0.38	0.41	0.40	0.54

Table 14.*) Total stock numbers (10^7) of the
1959-1961 year classes.

Year class	Y e a r s					
	1963	1964	1965	1966	1967	1968
1959	34.2	753.5	1 628.3	1 392.1	681.3	413.2
1960	-	58.5	277.9	722.1	448.1	301.3
1961	-	-	83.1	268.5	187.1	121.6

Table 15.*) Estimates of exploitation rate, $\frac{F}{F+M}$
and components of mortality.

Year class	$\frac{F}{F + M}$	F + M	F	M
1959	0.66	0.47	0.31	0.160
1960	0.62	0.42	0.26	0.160
1961	0.64	0.43	0.28	0.155

*) Reproduced from the previous report (ICES, 1970) without amendments.

Table 16. *) Estimates of F derived from stock size indices obtained from tagging experiments and acoustic surveys in mid-winter landings (thousand of metric tons).

Season	Stock size estimates			Year	Stock size index for year n, ob- tained from estimate season $\frac{n-1/n + n/n+1}{2}$	Landings	F
	From tagging	From echo- surveys	Mean stock index				
1952/53	12 500	-	12 500	1953	12 300	851	0.07
1953/54	12 100	-	12 100	1954	13 000	1 306	0.10
1954/55	13 900	-	13 900	1955	12 950	1 218	0.10
1955/56	12 000	-	12 000	1956	10 700	1 461	0.15
1956/57	9 400	-	9 400	1957	8 000	1 148	0.15
1957/58	6 600	-	6 600	1958	6 050	785	0.14
1958/59	5 000	6 000	5 500	1959	-	883	-
1959/60	-	-	-	1960	-	821	-
1960/61	-	3 100	3 100	1961	2 800	498	0.20
1961/62	-	2 500	2 500	1962	2 650	551	0.23
1962/63	-	2 800	2 800	1963	3 475	651	0.21
1963/64	5 000	3 300	4 150	1964	5 700	1 118	0.22
1964/65	7 700	6 800	7 250	1965	6 925	1 326	0.21
1965/66	6 600	-	6 600	1966	5 300	1 723	0.39
1966/67	4 000	-	4 000	1967	3 000	1 131	0.47
1967/68	-	2 000	2 000	1968	-	257	

*) Reproduced from the previous report (ICES, 1970) without amendments.

Table 17.*) Summary of estimates of total mortalities (Z)
and fishing mortalities (F).

	Z	F	Source
1950/55	0.20		Table 12
1955/60	0.22		Table 12
1962/65	0.16		Table 13(a) average
	0.09		Table 13(b) average
1965/68	0.62		Table 13(a) average
	0.87		Table 13(b) average
1962/68	0.43		Table 13 Grand Mean, average
<u>Year class</u> <u>estimates</u>			
1959 (65/68)	0.54		Calculated from Table 10
1959 (65/68)	0.47	0.31	Table 15
1960 (66/68)	0.42	0.26	Table 15
1961 (67/68)	0.43	0.28	Table 15
<u>Stock size</u> <u>catch</u>			
1953/58		0.12	Table 16
1961/65		0.21	Table 16
1966/67		0.43	Table 16

*) Reproduced from the previous report (ICES, 1970)
without amendments.

Table 18. Catches of small and fat herring (in thousand tons)
taken by Norway and USSR.

Year	Small herring			Fat herring			Grand total
	Norway	USSR	Total	Norway	USSR	Total	
1901-10	22.3	-	22.3	53.7	-	53.7	76.0
1911-20	65.3	-	65.3	40.5	-	40.5	105.8
1921-30	83.4	-	83.4	46.5	0.3	46.8	130.2
1931-40	155.6	-	155.6	53.2	36.7	89.9	245.5
1941-50	108.5	-	108.5	35.1	4.3	39.4	147.9
1951	190.1	10.5	200.6	80.5	2.5	83.0	284.2
1952	276.4	2.1	278.5	55.2	1.9	57.1	335.6
1953	147.0	3.8	150.8	84.7	5.2	89.9	240.7
1954	190.1	8.8	198.9	138.0	1.2	139.2	338.1
1955	94.3	3.0	97.3	36.0	9.0	45.0	142.3
1956	86.8	-	86.8	102.0	10.0	112.0	198.8
1957	118.5	3.8	123.3	46.4	1.5	47.9	171.2
1958	133.5	8.1	141.6	55.1	4.6	60.0	201.6
1959	164.5	7.2	171.7	46.8	9.5	56.3	228.0
1960	212.0	5.7	217.7	62.2	0.8	63.0	280.7
1961	222.7	0.9	223.6	108.5	0.1	108.6	332.2
1962	124.5	0.7	125.2	171.3	0.9	172.2	297.4
1963	157.9	-	157.9	143.8	12.0	155.8	313.7
1964	106.8	-	106.8	56.9	0.2	57.1	163.9
1965	116.9	-	116.9	94.3	10.7	105.0	221.9
1966	78.8	-	78.8	147.9	21.9	169.8	248.6
1967	107.1	-	107.1	346.0	92.6	438.6	545.7
1968	26.3	-	26.3	341.1	71.7	412.8	439.1
1969	14.4	-	14.4	21.2	8.1	29.3	43.7
1970	11.2	-	11.2	29.1	-	29.1	40.3

Table 19. Total numbers caught in the small and fat herring fisheries in relation to 0-group abundances for the year classes 1959-1969.

Year class	0-group		Catches in numbers $\times 10^{-9}$		Measures of exploitation rate	
	Abundance index	Relative index	Small herring	Fat herring	Small herring	Fat herring
	a		b	c	$\frac{10b}{a}$	$\frac{10c}{a}$
1959	326	1.00	31.08	3.248	0.95	0.10
1960	147	0.45	28.89	1.630	1.97	0.11
1961	38	0.12	11.35	1.315	2.99	0.35
1962	15	0.05	5.84	0.319	3.89	0.21
1963	54	0.17	8.27	5.100	1.53	0.94
1964	75	0.23	8.96	5.164	1.19	0.69
1965	9	0.03	3.00	0.009	3.33	0.01
1966	23	0.07	13.31	0.222	5.79	0.10
1967	4	0.01	0.66	0.084	1.65	0.21
1968	2	0.01	1.34	0.016	6.70	0.08
1969	5	0.02	1.81	0.384	3.62	0.79

New Table 20. Total catch (thousand tons) of Icelandic herring
taken by Icelandic and Norwegian fleets.

Year	Spring spawners			Summer spawners			Grand total
	North coast	South coast	Total	North coast	South coast	Total	
1957	69.0	13.5	82.5	13.4	9.4	22.8	105.3
1958	72.9	10.8	83.7	9.8	23.7	33.5	117.2
1959	135.2	14.7	149.9	21.3	13.7	35.0	184.9
1960	98.8	19.0	117.8	17.9	10.6	28.5	146.3
1961	169.5	42.0	211.5	3.9	70.1	74.0	285.5
1962	220.3	59.9	274.2	2.4	90.5	92.9	373.1
1963	71.4	32.9	104.3	8.2	122.1	130.3	234.6
1964	65.2	36.3	101.5	3.9	82.6	86.5	188.0
1965	25.2	43.7	68.9	2.9	120.0	122.9	191.8
1966	13.7	11.3	25.0	2.6	51.8	54.4	79.4
1967	2.4	12.9	15.3	0.4	67.3	67.7	83.0
1968	0.1	4.2	4.3	-	16.8	16.8	21.1
1969	-	3.6	3.6	-	19.4	19.4	23.0
1970	-	0.4	0.4	-	15.9	15.9	16.3

Table 21*). Estimate of F and stock size from tagging
data. (Icelandic herring).

Year	F	Stock estimate (thousand tons)
1962	0.56	931
1963	0.44	619
1964	0.52	457
1965	1.11	304
1966	0.35	270

*) Reproduced from the previous report
(ICES, 1970) without amendments.

Table 22. Estimates of stock as 3 year old fish (fat herring stage),
assuming full recruitment at age 6-8, compared with
0-group abundance indices (Dragesund, 1970).

Year class	Stock		Abundance index 0-group	
	Numbers $\times 10^{-9}$	Relative to 1959	Index	Ratio
1959	24.0	1.00	326	1.00
1960	9.1	0.38	147	0.45
1961	2.9	0.12	38	0.12
1962	0.1	0.004	15	0.05

Table 23. Stock size (numbers) at age three, as back-calculated
from fully recruited adult herring (year classes 1959-
1962) and by comparison via 0-group abundance indices
(1963-1969) (a). Stock sizes at age 3 are compared
with numbers caught in the fat herring fishery up to
the year 1970 (b).

Year class	(a) ($\times 10^{-9}$)	(b) ($\times 10^{-9}$)
1959	24.0	3.25
1960	9.1	1.63
1961	2.9	1.32
1962	0.1	0.32
1963	4.1	5.10
1964	5.5	5.16
1965	0.7	0.002
1966	1.7	0.10
1967	0.2	0.08
1968	0.2	0.02
1969	0.5	0.38

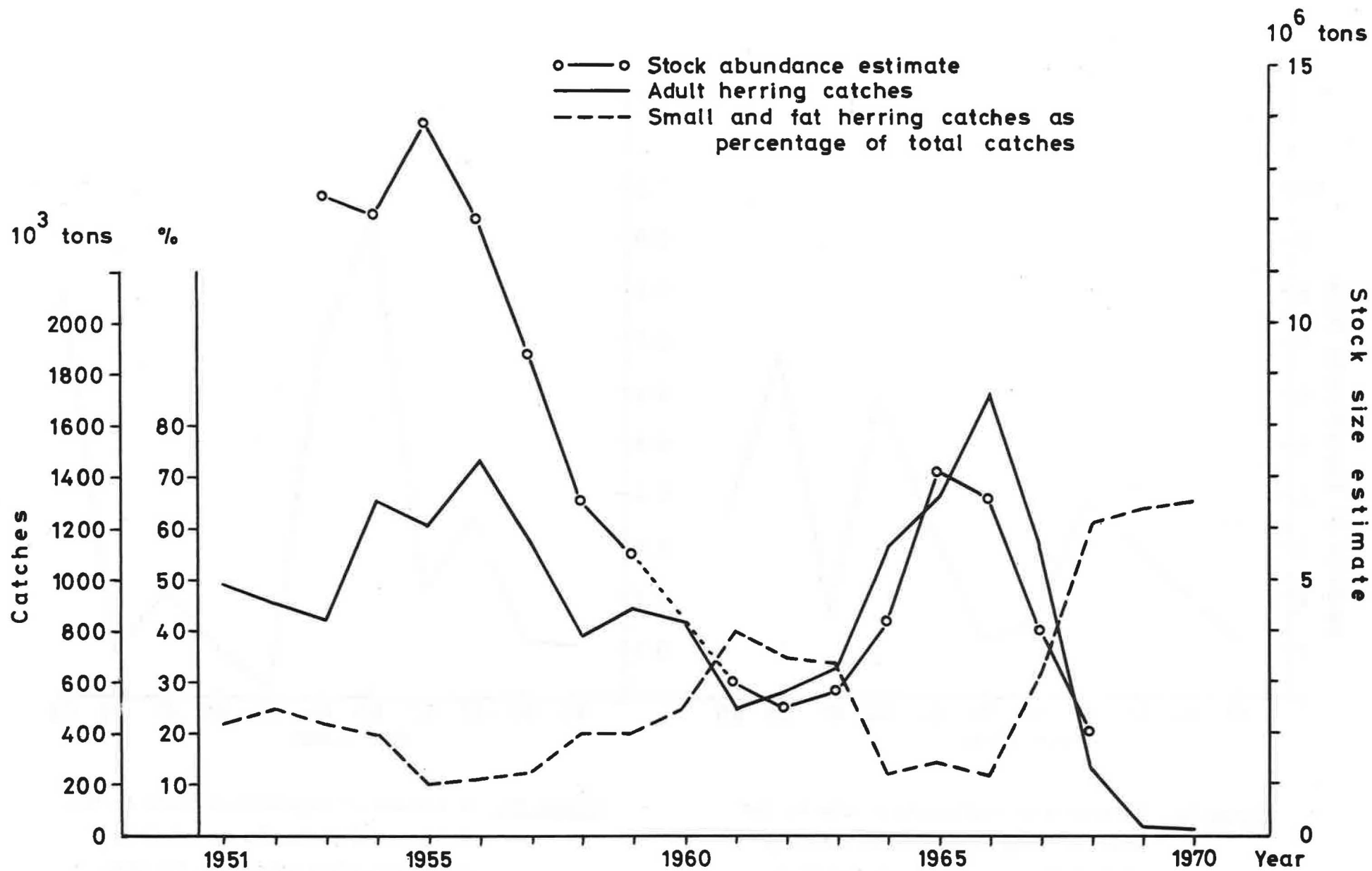


Figure 1. Stock abundance estimate, adult herring catches and small and fat herring catches as percentages of total catches 1951 - 1970.

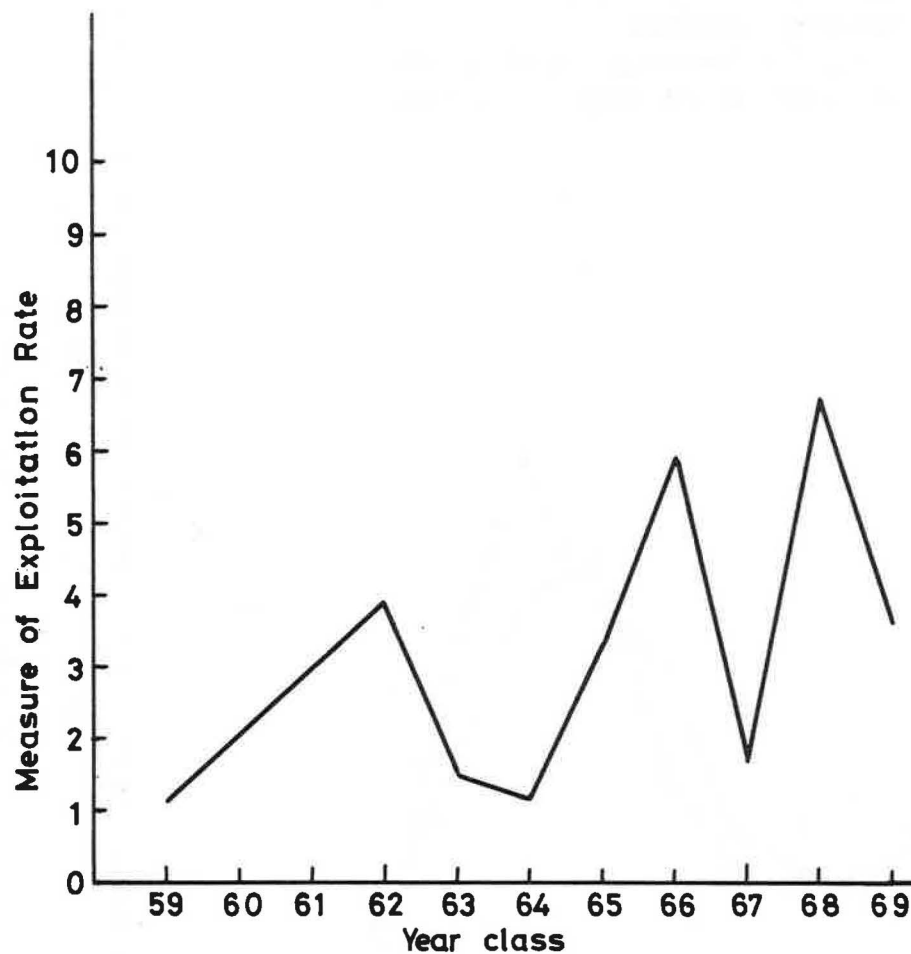


Figure 2a. A measure of exploitation rate in the small herring fisheries as catch in numbers/0-group abundance for year classes 1959 - 1969 (cf. Table 19)

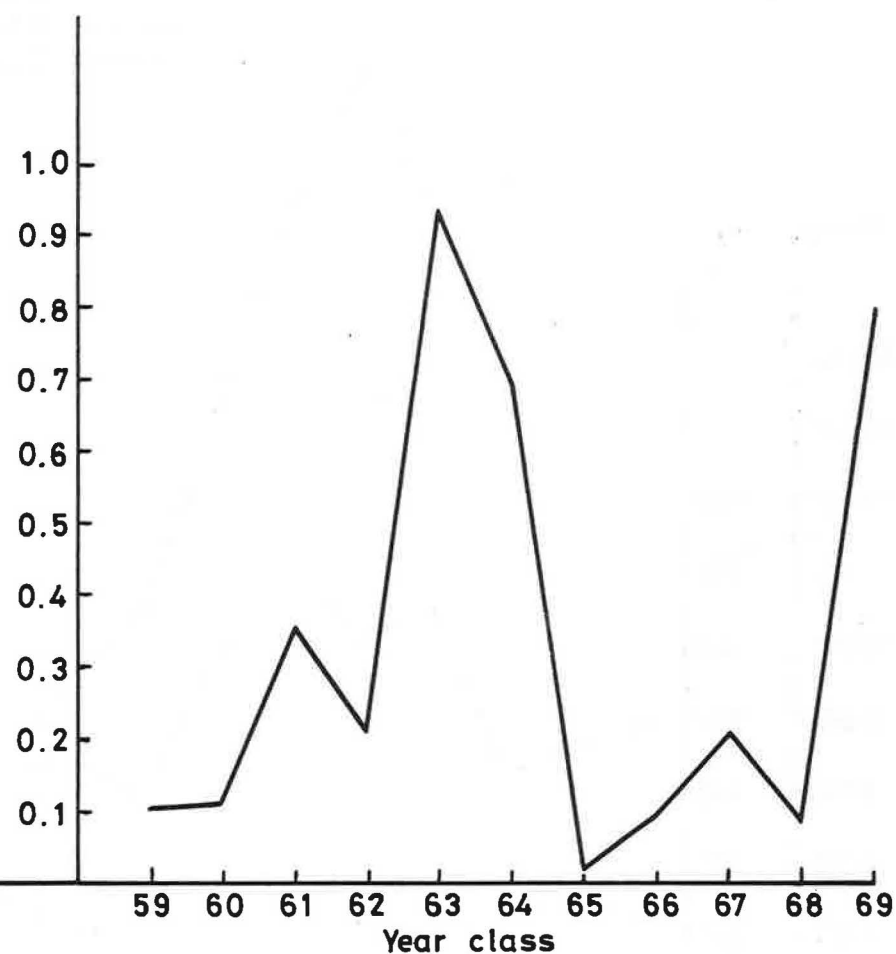


Figure 2b. A measure of exploitation rate in the fat herring fisheries as catch in numbers/0-group abundance for year classes 1959 - 1969 (cf. Table 19).