

Roundnose grenadier (*Coryphaenoides rupestris*) in divisions 10.b and 12.c, and in subdivisions 12.a.1, 14.b.1, and 5.a.1 (Oceanic Northeast Atlantic and northern Reykjanes Ridge)

ICES stock advice

ICES advises that when the precautionary approach is applied, landings should be no more than 717 tonnes in each of the years 2018 and 2019. ICES cannot quantify the corresponding catches.

Stock development over time

Substantial landings were recorded in the 1970s and 1980s. Since then, landings have been variable and at a considerably lower level.

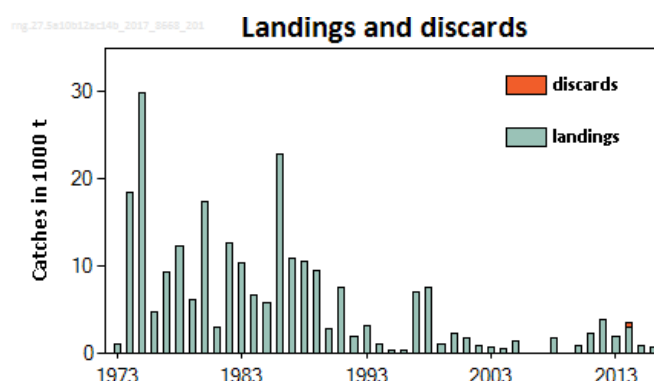


Figure 1 Roundnose grenadier in divisions 10.b and 12.c, and in subdivisions 12.a.1, 14.b.1, and 5.a.1. Landings and discards (in thousand tonnes).

Stock and exploitation status

Table 1 Roundnose grenadier in divisions 10.b and 12.c, and in subdivisions 12.a.1, 14.b.1, and 5.a.1. State of the stock and fishery relative to reference points.

		Fishing pressure				Stock size				
		2014	2015	2016		2014	2015	2016		
Maximum sustainable yield	F_{MSY}	?	?	?	Unknown	$MSY B_{trigger}$?	?	?	Unknown
Precautionary approach	F_{pa}, F_{lim}	?	?	?	Unknown	B_{pa}, B_{lim}	?	?	?	Unknown
Management plan	F_{MGT}	—	—	—	Not applicable	B_{MGT}	—	—	—	Not applicable
Qualitative evaluation	-	?	?	?	Unknown	-	?	?	?	Unknown

Catch options

The ICES framework for category 5 stocks was applied (ICES, 2012). For stocks without information on abundance or exploitation, ICES considers that a precautionary reduction of catches should be implemented unless there is ancillary information clearly indicating that the current level of exploitation is appropriate for the stock.

The precautionary buffer (20% reduction in landings) was applied in the 2015 advice and the available new data (catch statistics) do not change the perception of the stock. Therefore, the same catch advice (717 t) is still applicable for 2018 and 2019.

Table 2 Roundnose grenadier in divisions 10.b and 12.c, and in subdivisions 12.a.1, 14.b.1, and 5.a.1. The basis for the catch options.

Recent advised landings (2016–2017)	717 tonnes	
Discard rate	Unknown	
Precautionary buffer	Not applied	-
Landings advice*	717 tonnes	

* (Recent advised landings). The figures in the table are rounded. Calculations were done with unrounded inputs and computed values may not match exactly when calculated using the rounded figures in the table.

Basis of the advice

Table 3 Roundnose grenadier in divisions 10.b and 12.c, and in subdivisions 12.a.1, 14.b.1, and 5.a.1. The basis of the advice.

Advice basis	Precautionary approach.
Management plan	ICES is not aware of any agreed precautionary management plan for 2017 in this area.

Quality of the assessment

No abundance estimates are available for roundnose grenadier in these areas.

Issues relevant for the advice

No additional information is available for this stock.

Reference points

No reference points are defined for this stock.

Basis of the assessment

Table 4 Roundnose grenadier in divisions 10.b and 12.c, and in subdivisions 12.a.1, 14.b.1, and 5.a.1. Basis of the assessment and advice.

ICES stock data category	5 (ICES, 2016).
Assessment type	No assessment (ICES, 2017).
Input data	Catch statistics.
Discards and bycatch	Discard data are available only for 2014.
Indicators	None.
Other information	None.
Working group	Working Group on the Biology and Assessment of Deep-Sea Fisheries Resources (WGDEEP)

Information from stakeholders

There is no available information.

History of the advice, catch, and management

Table 5 Roundnose grenadier in divisions 10.b and 12.c, and in subdivisions 12.a.1, 14.b.1, and 5.a.1. ICES advice and official landings. All weights are in tonnes.

Year	ICES advice	Predicted catch corresp. to advice	TAC EU sSubareas 8, 9, 10, 12, and 14	ICES catches divisions 10.b, 12.c, and subdivisions 5.a.1, 12.a.1, 14.b.1
2003	Fishery not allowed to expand, unless proven to be sustainable	-	-	782
2004	Biennial	-	-	646
2005	Fishery not allowed to expand, unless proven to be sustainable	-	7190	1399
2006	Biennial	-	7190	1
2007	Fishery not allowed to expand, unless proven to be sustainable	-	6114	59
2008	Biennial	-	6114	1735
2009	Fishery not allowed to expand, unless proven to be sustainable	-	5197	5
2010	Biennial	-	5197	826*
2011	Fishery should not be allowed to expand and a reduction in catches should be considered	-	4573	2239*
2012	No new advice, same as 2011		3979	3826
2013	20% reduction in catches (last 3 years' average)	< 1350	3581	1908
2014***	No new advice, same as 2013	< 1350	3223	3470
2015	2013 advice adjusted with updated catch data	< 717	3644	862
2016	Maintain current catch advice	< 717	3279	660
2017	Same advice as in 2016	< 717	2623**	
2018	Precautionary approach (same value as advised landings for 2016-2017)	≤ 717	2099**	
2019	Precautionary approach (same value as advised landings for 2016-2017)	≤ 717		

* Data on catches were revised by WGDEEP 2014 (ICES, 2014).

** In the combined TAC for roundnose and roughhead grenadiers, roundnose grenadier cannot exceed 80% of the quota of each country.

*** Prior to 2014 the historical table of advice and TAC refers to landings.

History of the catch and landings

Table 6 Roundnose grenadier in divisions 10.b and 12.c, and in subdivisions 12.a.1, 14.b.1, and 5.a.1. Catch distribution by fleet in 2016 as estimated by ICES.

Catch (2016)	Landings	Discards
660 tonnes	Midwater trawlers 100%	Unknown
	660 tonnes	

Table 7 Roundnose grenadier in divisions 10.b and 12.c, and in subdivisions 12.a.1, 14.b.1, and 5.a.1. Landings inside and outside the NEAFC Regulatory Area (RA) as estimated by ICES; landings in tonnes. Note that ICES cannot quantify catches.

Year	Inside the NEAFC RA (t)	Outside the NEAFC RA (t)	Landings (t)
2014	3470	0	3470
2015	862	0	862
2016	660	0	660

Table 8 Roundnose grenadier in divisions 10.b and 12.c, and in subdivisions 12.a.1, 14.b.1, and 5.a.1. History of commercial catch and landings; both the official and ICES estimated values are presented by area for each country participating in the fishery. All weights are in tonnes.

Year	Subdiv. 5.a.1*		Division 10.b			Subdivision 12.a.1* and Division 12.c						Subdivision 14.b.1*						TOTAL
	USSR/ Russia	Total	USSR/ Russia	Faroes*	Total	USSR/ Russia	Poland*	Latvia*	Faroes*	Spain*	Total	USSR/ Russia	Spain*	Total official	Unallocated	Discards	Total estimated	
1980						17419					17419							17419
1981						2954					2954							2954
1982						12472					12472	153		153				12625
1983						10300					10300							10300
1984						6637					6637							6637
1985						5793					5793							5793
1986						22842					22842							22842
1987						10893					10893							10893
1988						10606					10606							10606
1989						9495					9495							9495
1990						2838					2838							2838
1991						3214		4296			7510							7510
1992						295		1684			1979							1979
1993				249	249	473		2176	263		2912							3161
1994								675	457		1132							1132
1995									359		359							359
1996				3	3	208			136		344							347
1997				1	1	705	5867		138		6710	3361		3361				10072
1998				1	1	812	6769		19		7600							7601
1999				3	3	576	546		29		1151							1154
2000						2325					2325	5		5				2330
2001						1714			2		1716	69		69				1785
2002						737					737	4	235	239				976
2003						510					510		272	272				782

Year	Subdiv. 5.a.1*		Division 10.b			Subdivision 12.a.1* and Division 12.c						Subdivision 14.b.1*						TOTAL
	USSR/ Russia	Total	USSR/ Russia	Faroes*	Total	USSR/ Russia	Poland*	Latvia*	Faroes*	Spain*	Total	USSR/ Russia	Spain*	Total official	Unallocated	Discards	Total estimated	
2004				1	1	436			8		444	201		201				646
2005			799		799	600					600							1399
2006									1		1							1
2007									2		2		57					59
2008						13					13		1722					1735
2009						5					5							5
2010			73		73								753	753				826
2011									3				2239	2239				2239
2012										864	868^		1860	1860	1098		2958	3826
2013										118			1789				1789	1908
2014									4		4		2065	2065	1015	386	3466	3470
2015										329			533					862
2016**										289			371					660

* ICES estimates.

** Preliminary.

^ includes 4 tonnes from Lithuania, landed in one single year (no column added).

Summary of the assessment

There is no assessment for the species in this area; landings data only are used for advice.

Sources and references

- ICES. 2012. ICES Implementation of Advice for Data-limited Stocks in 2012 in its 2012 Advice. ICES CM 2012/ACOM:68. 42 pp.
- ICES. 2014. Report of the Working Group on Biology and Assessment of Deep-sea Fisheries Resources (WGDEEP), 4–11 April 2014, Copenhagen, Denmark. ICES CM 2014/ACOM:17. 862 pp.
- ICES. 2016. Advice basis. *In* Report of the ICES Advisory Committee, 2016. ICES Advice 2016, Book 1, Section 1.2.
- ICES. 2017. Report of the Working Group on the Biology and Assessment of Deep-sea Fisheries Resources (WGDEEP), 24 April–1 May 2017, Copenhagen, Denmark. ICES CM 2017/ACOM:14. 702 pp.