

Horse mackerel (*Trachurus trachurus*) in divisions 3.a, 4.b–c, and 7.d (Skagerrak and Kattegat, southern and central North Sea, eastern English Channel)

ICES stock advice

ICES advises that when the precautionary approach is applied, catches should be no more than 17 517 tonnes in each of the years 2018 and 2019.

Stock development over time

The combined CGFS–IBTS (Channel Groundfish Survey–North Sea International Bottom Trawl Survey) survey index indicates that the stock continues to be at a low level, although some signs of recovery are observed.

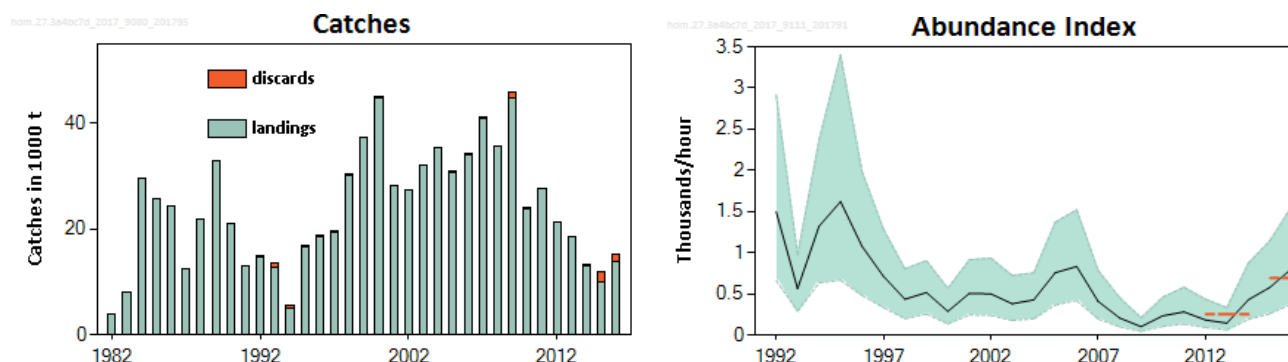


Figure 1 Horse mackerel in divisions 3.a, 4.b–c, and 7.d. Left: Catches in quarters 1 and 2 from divisions 3.a and 4.a, and in all quarters from divisions 4.b–c and 7.d. Discard estimates are only available for some years. Right: Index of abundance of fish > 20 cm length in the stock; data obtained from a combination of the IBTS and CGFS surveys in the North Sea (divisions 4.b–c, Q3) and eastern English Channel (Division 7.d, Q4), respectively. Confidence intervals (95%) are included.

Stock and exploitation status

Table 1 Horse mackerel in divisions 3.a, 4.b–c, and 7.d. State of the stock and fishery relative to reference points. The status evaluation is based on reference point proxies (ICES, 2017a).

Evaluation is based on reference point proxies (RPS, 2017a).										
		Fishing pressure				Stock size				
		2014	2015	2016		2014	2015	2016		
Maximum Sustainable Yield	F _{MSY proxy}	?	?	✗	Above	MSY B _{Trigger}	?	?	?	Undefined
Precautionary Approach	F _{pa} , F _{lim}	?	?	?	Undefined	B _{pa} , B _{lim}	?	?	?	Undefined
Management plan	F _{MGT}	—	—	—	Not applicable	B _{MGT}	—	—	—	Not applicable
Qualitative evaluation	-	?	?	?	Unknown	-	↗	↗	↗	Increasing

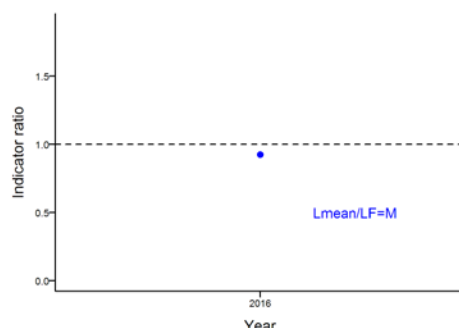


Figure 2 Horse mackerel in divisions 3.a, 4.b–c, and 7.d. The index ratio $L_{\text{mean}}/L_{\text{F=M}}$ from the length-based indicator (LBI; ICES, 2017b) method is used for the evaluation of the exploitation status. The exploitation status is above the F_{MSY} proxy when the index ratio value is less than 1.

Catch options

The ICES framework for category 3 stocks was applied (ICES, 2012). The index of stock abundance is derived from the combination of two surveys: the Channel Groundfish Survey (CGFS) in September–October and the North Sea International Bottom Trawl Survey (NS-IBTS) in July–September, and it is used as the index of stock development over time. The advice is based on a comparison of the two latest index values (index A) with the three preceding values (index B), multiplied by the recent advised catch.

The index is estimated to have increased by more than 20% and thus the uncertainty cap was applied.

The precautionary buffer was last applied in 2014. Fishing mortality is above the F_{MSY} proxy (as indicated by a length-based analysis), and stock size relative to reference points is unknown. Therefore, the precautionary buffer was applied to the advice.

Table 2 Horse mackerel in divisions 3.a, 4.b–c, and 7.d. The basis for the catch options.

Index A (2015, 2016)	692 ind. h ⁻¹	
Index B (2012, 2013, 2014)	254 ind. h ⁻¹	
Ratio (A/B)	2.7	
Uncertainty cap	Applied	1.2
Precautionary buffer	Applied	0.8
Advised catch for 2017	18247 tonnes	
Catch advice*	17517 tonnes	
Discard rate (average 2015–2016)	13.35%	
Landings corresponding to the catch advice**	15179 tonnes	

The values in the table are rounded. Calculations were done with unrounded inputs and computed values may not match exactly when calculated using the rounded values in the table.

* [Advised catch for 2017] × [uncertainty cap] × [precautionary buffer].

** [Catch advice] × [1 – discard rate].

Basis of the advice

Table 3 Horse mackerel in divisions 3.a, 4.b–c, and 7.d. The basis of the advice.

Advice basis	Precautionary approach.
Management plan	There is no management plan for horse mackerel in this area. ICES evaluated a proposed harvest control rule for a multi-annual plan for horse mackerel in the North Sea (ICES, 2014). None of the options were considered as being in accordance with the precautionary approach.

Quality of the assessment

In 2017 this stock was benchmarked (ICES, 2017c), and the information of the NS-IBTS Q3 and the CGFS Q4 surveys was combined with a statistical model, producing a joint abundance index. As a consequence the stock is now in category 3, and the index is therefore used to provide catch advice (ICES, 2012).

In 2015, the RV “Gwen Drez” was replaced by the RV “Thalassa” to carry out the CGFS survey. In 2014 an intercalibration process was conducted to quantify the differences in catchability for a large number of species. ICES reviewed this intercalibration exercise and considered the results to be acceptable for this stock.

Issues relevant for the advice

Discarding in the target pelagic fisheries is considered negligible. New information in 2015 from bottom-trawl fisheries not directed at horse mackerel indicated a discard rate of 16.7% for the stock as a whole. This has continued in 2016, with a discard rate close to 10%. Still, discard information is considered to be incomplete, and discard numbers from earlier years have not been submitted to ICES. However, information from national discard reports for the non-directed bottom-trawl fisheries indicates a similar level of discarding occurring in earlier years.

Since 2013, signals of better recruitment have been observed in survey indices and fishery catch-at-age data, especially in Division 7.d. The main focus of the fisheries in this area in 2015 and 2016 has been on the smaller fish (ages 1 and 2); this is expected to continue in 2017. With this pattern of exploitation, mostly immature individuals are caught, which might hinder the recovery of the stock by removing an important portion of the recent year classes before they can enter the spawning stock.

Reference points

Table 4 North Sea horse mackerel in divisions 3.a, 4.b–c, and 7.d. Reference points, values, and their technical basis.

Framework	Reference point	Value	Technical basis	Source
MSY approach	MSY $B_{trigger}$	Not defined		
	$F_{MSY_{proxy}}$	24.7 cm (2016)	Length-based indicator (LBI; ICES 2015). Expected mean length of catch above L_c when $F = M$, assuming $M/K = 1.5$.	ICES (2017a)
Precautionary approach	B_{lim}	Not defined		
	B_{pa}	Not defined		
	F_{lim}	Not defined		
	F_{pa}	Not defined		
Management plan	SSB_{mgt}	Not defined		
	F_{mgt}	Not defined		

Basis of the assessment

Table 5 Horse mackerel in divisions 3.a, 4.b–c, and 7.d. Basis of assessment and advice.

ICES stock data category	3 (ICES, 2016).
Assessment type	Survey trends based assessment.
Input data	Commercial catch, NS-IBTS and CGFS data.
Discards and bycatch	Included in the advice (9.95% of the total catch in 2016, 16.7% in 2015).
Indicators	Length-based indicators.
Other information	This stock has been benchmarked in 2017 (ICES, 2017c).
Working group	Working Group on Widely Distributed Stocks (WGWISE)

Information from stakeholders

On behalf of the Pelagic Advisory Council and the EAPO Northern Pelagic Working Group, a research project on genetic composition of horse mackerel stocks was initiated in 2015 with University College Dublin (Ireland). Genetic samples have been taken over the whole distribution area of horse mackerel during the years 2015, 2016, and 2017, with a specific focus on the separation between horse mackerel in the western waters and horse mackerel in the North Sea. It is anticipated that results of the genetic analysis will be available in the first half year of 2018.

Historical catch rates of pelagic freezer-trawlers, based on skippers' diaries, have been compiled. The results were presented to the benchmark in 2017, but further work is necessary to develop an index of stock biomass from these data.

History of the advice, catch, and management

Table 6 Horse mackerel in divisions 3.a, 4.b–c, and 7.d. ICES advice and catch. All weights are in tonnes.

Year	ICES advice	Predicted catch corresp. to advice	Agreed TAC *	ICES catch **
1987	Not assessed	-	30000	12336
1988	No advice	-	50000	21806
1989	No advice	-	45000	32788
1990	No advice	-	40000	21023
1991	No advice	-	45000	12913
1992	No advice	-	55000	15043
1993	No advice	-	60000	13617
1994	No advice	-	60000	5629
1995	No advice	-	60000	16756
1996	No advice	-	60000	18843
1997	No advice	-	60000	19540
1998	Develop and implement management plan	-	60000	30500
1999	Develop and implement management plan	-	60000	37224
2000	Develop and implement management plan	-	51000	45133
2001	No increase in catch	-	51000	28331
2002	No increase in catch from 1982–1997 average	< 18000	58000	27264
2003	No increase in catch from 1982–1997 average	< 18000	50000	32028
2004	No increase in catch from 1982–1997	< 18000	42000	35435
2005	No increase in catch from 1982–1997	< 18000	43000	30911
2006	No increase in catch from 1982–1997	< 18000	43000	34318
2007	No increase in catch from 1982–1997	< 18000	43000	41242
2008	No increase in catch from 1982–1997	< 18000	39000	35704
2009	Same advice as last year	< 18000	39000	46919
2010	Same advice as last year	< 18000	47000	24151
2011	No advice	-	40000	27619
2012	Reduce catches	-	44000	21378
2013	Reduce catches by 20%	< 25500	38000	18645
2014	Same advice as last year	< 25500	32000	13388
2015	Significant reduction in catches	< 15200	15200	12002
2016	Same advice value as in 2015	≤ 15200	15200	15341
2017	Precautionary approach	≤ 18247***	18247***	
2018	Precautionary approach	≤ 17517***		
2019	Precautionary approach (same advice as for 2018)	≤ 17517***		

* Until 2010 the TAC is for Division 2.a and Subarea 4 (EU waters only). From 2010 onwards the TAC is for divisions 3.a , 4.b–c, and 7.d (EU waters only).

** ICES Catch includes catches from divisions 4.a and 3.a (quarters 1–2 only).

*** Total catch advice takes into account information on discarding from non-directed bottom-trawl fisheries, which first became available in 2016.

History of the catch and landings

Table 7 Horse mackerel in divisions 3.a, 4.b–c, and 7.d. Catch distribution by fleet in 2016 as estimated by ICES.

Catch (2016)	Landings				Discards
15 341 tonnes	Bottom trawl 2.5%	Pelagic trawl 50%	Seine 0.5%	Undefined gears 47%	1 527 tonnes
	13 814 tonnes				

Table 8 Horse mackerel in divisions 3.a, 4.b–c, and 7.d. History of commercial catch and landings; ICES estimated values are presented by area for each country participating in the fishery. All weights are in tonnes.

Year	Division 3.a	Division 4.a	Divisions 4.b–c	Division 7.d	Discards	Total
1982	2788*		-	1247		4035
1983	4420*		-	3600		8020
1984	25893*		-	3585		29478
1985	-		22897	2715		26750
1986	-		19496	4756		24648
1987	1138		9477	1721		11634
1988	396		18290	3120		23671
1989	436		25830	6522		33265
1990	2261		17437	1325		18762
1991	913		11400	600		12000
1992			13955	688	400	15043
1993			3895	8792	930	13617
1994			2496	2503	630	5689
1995	112		7948	8666	30	16756
1996	1657		7558	9416	212	18843
1997			14078	5452	10	19540
1998	3693		10530	16194	83	30500
1999			9335	27889		37224
2000	-	176	25934	19019	4	45133
2001	43	212	6686	21390	0	28331
2002	0	639	15303	11323	0	27264
2003	49	622	10309	21049	0	32028
2004	303	133	18544	16455	0	35435
2005	0	1331	13995	15522	62	30911
2006	185	2192	7996	23867	78	34318
2007	11	2051	9234	29808	139	41242
2008	27	910	2582	32185	0	35704
2009	21	314	20010	25537	1036	46919
2010	0	100	1969	22079	2	24151
2011	0	0	10435	17184	0	27619
2012	0	355	1559	19464	0	21378
2013	0	17	1453	17175	0	18645
2014	2	2	2604	10772	7	13388
2015	4	644	782	8568	2004	12002
2016	4	1629	1071	11110	1527	15341

*Divisions 3.a and 4.b–c combined.

Summary of the assessment

Table 9 Horse mackerel in divisions 3.a, 4.b–c, and 7.d. Abundance index of North Sea horse mackerel (in thousands/hour) obtained from the combination of the NS-IBTS in divisions 4.b–c in Q3 and the CGFS in Division 7.d in Q4. The High and Low columns represent the confidence intervals (95%) of the indices.

Year	Abundance index	High	Low	Landings tonnes	Discards tonnes
1982				4035	
1983				8020	
1984				29478	
1985				25612	
1986				24252	
1987				12336	
1988				21806	
1989				32788	
1990				21023	
1991				12913	
1992	1.498	2.915	0.663	14643	400
1993	0.565	0.974	0.291	12687	930
1994	1.322	2.368	0.635	5059	630
1995	1.621	3.401	0.669	16726	30
1996	1.08	1.987	0.482	18631	212
1997	0.714	1.286	0.336	19530	10
1998	0.436	0.806	0.201	30417	83
1999	0.517	0.905	0.257	37224	0
2000	0.289	0.57	0.137	45126	4
2001	0.508	0.916	0.245	28331	0
2002	0.501	0.937	0.24	27264	0
2003	0.381	0.726	0.179	32028	0
2004	0.428	0.754	0.199	35435	0
2005	0.759	1.37	0.366	30786	62
2006	0.834	1.523	0.422	34162	78
2007	0.411	0.787	0.197	40964	139
2008	0.209	0.458	0.101	35704	0
2009	0.104	0.212	0.047	44847	1036
2010	0.234	0.459	0.106	24146	2
2011	0.282	0.583	0.136	27619	0
2012	0.185	0.437	0.093	21378	0
2013	0.146	0.335	0.064	18645	0
2014	0.43	0.876	0.193	13373	7
2015	0.58	1.146	0.261	9993	2004
2016	0.803	1.557	0.376	13813	1527
Average	0.594	1.131	0.276	23737	286

Sources and references

- ICES. 2012. ICES Implementation of Advice for Data-limited Stocks in 2012 in its 2012 Advice. ICES CM 2012/ACOM 68. 42 pp.
- ICES. 2014. The Netherlands request for evaluation of the proposal for a multi-annual plan for horse mackerel in the North Sea. *In* Report of the ICES Advisory Committee, 2014. ICES Advice 2014, Book 6, Section 6.2.3.3. 7 pp.
- ICES. 2016. Advice basis. *In* Report of the ICES Advisory Committee, 2016. ICES Advice 2016, Book 1, Section 1.2.
- ICES. 2017a. Report of the Working Group on Widely Distributed Stocks (WGWISE), 30 August–5 September 2017, ICES HQ, Copenhagen, Denmark. ICES CM 2017/ACOM:23. In prep.

ICES. 2017b. ICES Technical Guidance for Providing Reference Points for Stocks in Categories 3-4. *In* Report of the ICES Advisory Committee, 2017. ICES Advice 2017, ICES Technical Guidelines, Section 16.4.3.2. 30 pp. In prep.

ICES. 2017c. Report of the Benchmark Workshop on Widely Distributed Stocks (WKWIDE), 30 January–3 February 2017, ICES HQ, Copenhagen, Denmark. ICES CM 2017/ACOM:36. 196 pp.