

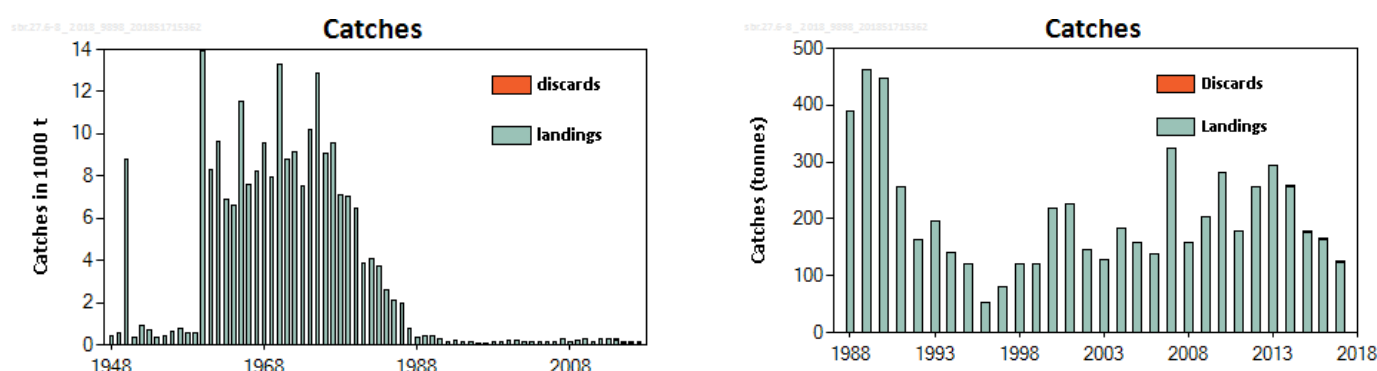
## Blackspot seabream (*Pagellus bogaraveo*) in subareas 6, 7, and 8 (Celtic Seas and the English Channel, Bay of Biscay)

### ICES advice on fishing opportunities

ICES advises that when the precautionary approach is applied, there should be zero catch in each of the years 2019 and 2020.

### Stock development over time

Catches are at 1–2% of the historical levels of the 1960s and 1970s, which indicates that the stock is depleted. There is no recent indication of recovery of the stock.



**Figure 1** Blackspot seabream in subareas 6, 7, and 8. Left: Historical catches since 1948. Right: official catches since 1988 (tonnes).

### Stock and exploitation status

ICES cannot assess the stock and exploitation status relative to maximum sustainable yield (MSY) and precautionary approach (PA) reference points because the reference points are undefined.

**Table 1** Blackspot seabream in subareas 6, 7, and 8. State of the stock and fishery relative to reference points.

		Fishing pressure				Stock size			
		2015	2016	2017		2015	2016	2017	
Maximum sustainable yield	$F_{MSY}$	?	?	?	Unknown	$MSY B_{trigger}$	?	?	?
Precautionary approach	$F_{pa}, F_{lim}$	?	?	?	Unknown	$B_{pa}, B_{lim}$	?	?	?
Management plan	$F_{MGT}$	—	—	—	Not applicable	$B_{MGT}$	—	—	—
Qualitative evaluation	-	?	?	?	Unknown	-	✗	✗	✗

### Catch scenarios

The ICES framework for category 5 stocks was applied (ICES, 2012). For stocks without information on abundance or exploitation, ICES considers that a precautionary reduction of catches should be implemented where there is no ancillary information clearly indicating that the current level of exploitation is appropriate for the stock. For the present stock this corresponds to zero catch in 2019 and 2020.

**Table 2** Blackspot seabream in subareas 6, 7, and 8. The basis for the catch scenarios\*.

Advised catches for 2017–2018 issued in 2016	0 t	
Discard rate	Negligible	
Precautionary buffer	Not applicable	-
Catch advice	0 t	
% Advice change**	0	

\*The figures in the table are rounded. Calculations were done with unrounded inputs and computed values may not match exactly when calculated using the rounded figures in the table.

\*\*Advice value for 2019 relative to advice value for 2018.

### Basis of the advice

**Table 3** Blackspot seabream in subareas 6, 7, and 8. The basis of the advice.

Advice basis	Precautionary approach
Management plan	ICES is not aware of any agreed precautionary management plan for blackspot seabream in this area.

### Quality of the assessment

Catches declined significantly in the 1970s–80s, and this is considered to be demonstrative of the depletion in stock biomass. Recent further decline that has taken place is reflecting the TAC constraint. Three bottom trawl surveys (EVHOE-WIBTS-Q4, SpGFS-WIBTS-Q4, and IGFS-WIBTS-Q4) take place in the area of the stock, but the species is currently rarely caught in these surveys. Since the species is not well selected by the surveys they are not used as quantitative indicators of the stock size but as supporting information. If the population increases substantially then they should appear in these bottom trawl survey indices.

### Issues relevant for the advice

The fishery in subareas 6, 7 and 8 declined rapidly in the mid-1970s, and the stock is seriously depleted. Historically blackspot seabream was caught in a directed fishery. Since 2014 the advice has been to reduce mortality by all means. No directed fishery is allowed and the TAC is exclusively for bycatch. At present the blackspot seabream catches in these areas are almost all bycatches in longline and otter trawl fleets.

In 2014 ICES recommended the establishment of a recovery plan for the stock. Measures should include protection for areas where juveniles occur. Recreational fisheries may constitute a significant proportion of the mortality of those juveniles owing to their coastal distribution.

### Reference points

No reference points are defined for this stock.

### Basis of the assessment

**Table 4** Blackspot seabream in subareas 6, 7, and 8. The basis of the assessment.

ICES stock data category	6 ( <a href="#">ICES, 2016</a> )
Assessment type	No assessment (ICES, 2018)
Input data	Commercial catches for subareas 6, 7, and 8.
Discards and bycatch	Not included, discarding is considered negligible (between 0.6–1.3 % of total catches from 2014 to 2017). Recreational catches are unknown but may be significant.
Indicators	None
Other information	None
Working group	Working Group on the Biology and Assessment of Deep-Sea Fisheries Resources ( <a href="#">WGDEEP</a> )

## Information from stakeholders

There is information from stakeholders that abundance is increasing in the north of Division 8.a. Trawlers detect shoals that they avoid.

## History of the advice, catch, and management

**Table 5** Blackspot seabream in subareas 6, 7, and 8. History of ICES advice, the agreed TAC, and official landings. Weights are in tonnes.

Year	ICES advice	Predicted catch corresp. to advice	TAC EU subareas 6, 7, 8	ICES landings subareas 6, 7, 8
2003	*	-	350	129
2004	*	-	350	183
2005	*	-	350	158
2006	*	-	350	139
2007	*	-	298	324
2008	*	-	298	159
2009	Fishery should not be allowed to expand, unless proven to be sustainable	-	253	203
2010	Biennial	-	215	281
2011	Fishery should not be allowed to expand and a reduction in catches should be considered	-	215	177
2012	No new advice, same as 2011		215	257
2013	No directed fishery and minimize bycatch		196	295
2014	No new advice, same as 2013		178	256
2015	No directed fishery and minimize bycatch		169	177
2016	No new advice, same as 2015		160	164
2017	Precautionary approach: zero catch advice	0	144	126
2018	Precautionary approach (same value as advised catches for 2017)	0	130	
2019	Precautionary approach	0		
2020	Precautionary approach	0		

\* Advice prior to 2008 included for all areas.

## History of catch and landings

**Table 6** Blackspot seabream in subareas 6, 7, and 8. Commercial catch distribution by fleet in 2017 as estimated by ICES.

Total catch (2017)	Landings				Discards
127 tonnes	10.6% nets	4.4% trawls	74.9% hooks & lines	10.2% others	Negligible (1.2 tonnes)
	126 tonnes				

**Table 7** Blackspot seabream in subareas 6, 7, and 8. History of total official landings (in tonnes).

Year	Subareas 6 + 7	Subarea 8	Total landings
1988	252	137	389
1989	189	272	461
1990	134	312	446
1991	123	134	257
1992	40	124	164
1993	22	175	197
1994	10	131	141
1995	11	110	121
1996	29	23	52
1997	56	25	81
1998	17	104	121
1999	25	97	122
2000	20	200	220
2001	52	176	227
2002	25	121	147
2003	40	89	129
2004	55	128	183
2005	41	118	158
2006	63	77	139
2007	130	193	324
2008	63	95	159
2009	61	142	203
2010	62	218	281
2011	37	141	177
2012	156	101	257
2013	178	117	295
2014	60	196	256
2015	34	143	177
2016	40	124	164
2017*	37	89	126

\*Preliminary

**Table 8** Blackspot seabream in subareas 6, 7, and 8. History of official landings (in tonnes) presented by each country participating in the fishery.

Year	France*	Ireland	Spain	UK (E & W)	UK (Scot.)	Ch. Islands	Netherlands	Total
1988	89	0	138	162		0		389
1989	75	0	303	83		0		461
1990	37	3	353	53		0		446
1991	23	10	154	56		14		257
1992	11	16	137	0		0		164
1993	8	7	182	0		0		197
1994	0	0	140	0		1		141
1995	0	6	115	0		0		121
1996	0	4	47	1		0		52
1997	18	20	7	36				81
1998	18	4	93	6				121
1999	15	8	84	15				122
2000	15	n.a.	192	13				220
2001	9	11	170	37				227
2002	14	0	120	13				147
2003	19	0	90	20				129
2004	70	0	86	26				183
2005	57	0	94	7				158
2006	56	0	65	19				139
2007	90	0	176	57				324
2008	93	0	42	22				159
2009	38	1	153	10				203
2010	82	0	197	1				281
2011	40	0	133	5				177
2012	56	0	201	0				257
2013	54	0	237	4				295
2014	51	0	196	9	0.02			256
2015	31	0	146	0				177
2016	32	0	132	1	0.24			164
2017	19	1	105	1	0.10		0.2	126

**Table 9** Blackspot seabream in subareas 6, 7, and 8. Landings inside and outside the NEAFC Regulatory Area (RA) as estimated by ICES, landings in tonnes. Note that ICES cannot quantify catches.

Year	Inside the NEAFC RA	Outside the NEAFC RA	Total landings
2014	0	256	256
2015	0	177	177
2016	0	164	164
2017	0	126	126

## Summary of the assessment

There is no analytical assessment for this stock.

## Sources and references

ICES. 2012. ICES Implementation of Advice for Data-limited Stocks in 2012 in its 2012 Advice. ICES CM 2012/ACOM:68. 42 pp.

ICES. 2016a. Advice basis. *In* Report of the ICES Advisory Committee, 2016. ICES Advice 2016, Book 1, Section 1.2.

ICES. 2018. Report of the Working Group on the Biology and Assessment of Deep-sea Fisheries Resources (WGDEEP), 11–18 April 2018, ICES HQ, Copenhagen, Den-mark. ICES CM 2018/ACOM:14. 624 pp.