

Black-bellied anglerfish (*Lophius budegassa*) in divisions 8.c and 9.a (Cantabrian Sea, Atlantic Iberian waters)

ICES advice on fishing opportunities

ICES advises that when the precautionary approach is applied, catches in 2021 should be no more than 1800 tonnes.

Management of catches of the two anglerfish species, *Lophius budegassa* and *L. piscatorius*, under a combined species total allowable catch (TAC) prevents effective control of the single-species exploitation rates and could lead to the overexploitation of either species.

Note: This advice sheet is abbreviated due to the COVID-19 disruption. The previous advice issued for 2020 is attached as Annex 1.

Stock development over time

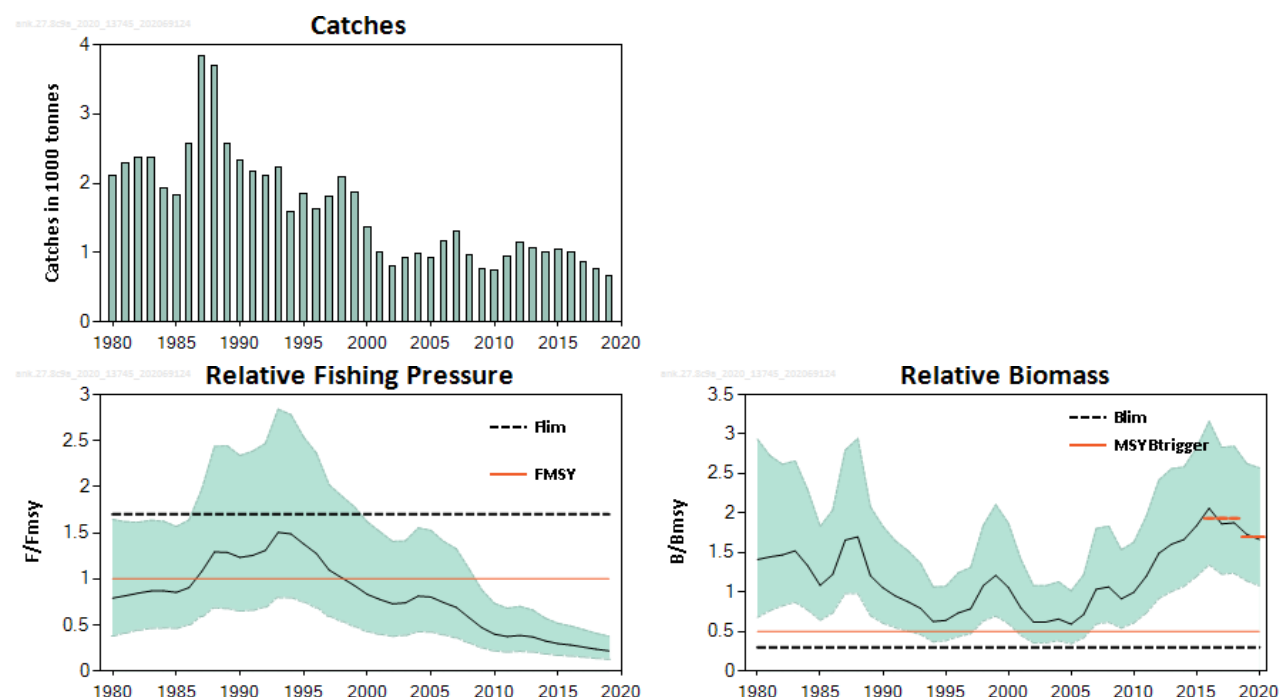


Figure 1 Black-bellied anglerfish in divisions 8.c and 9.a. Summary of the stock assessment: Catches (top left), relative fishing pressure (bottom left), and relative biomass (bottom right) with 95% confidence intervals (shaded area). The dashed orange lines indicate the average of the relative biomass for 2016 to 2018, and for 2019 to 2020.

Stock and exploitation status

Table 1 Black-bellied anglerfish in divisions 8.c and 9.a. State of the stock and the fishery relative to reference points.

		Fishing pressure			Stock size		
		2017	2018	2019	2018	2019	2020
Maximum sustainable yield	F _{MSY}	✓	✓	✓ Appropriate	MSY B _{trigger}	✓	✓ Above trigger
Precautionary approach	F _{pa} , F _{lim}	✓	✓	✓ Below possible reference points	B _{pa} , B _{lim}	✓	✓ Full reproductive capacity
Management plan	F _{MGT}	✓	✓	✓ Below	B _{MGT}	✓	✓ Above

Catch scenarios

Table 2 Black-bellied anglerfish in divisions 8.c and 9.a. The catch scenario table.*

Index A (2019–2020)		1.70
Index B (2016–2018)		1.93
Index ratio (A/B)		0.88
Uncertainty cap	Not applied	-
Advised catch for 2020 (issued in 2019)		2050 tonnes
Discard rate		Negligible
Precautionary buffer	Not applied	-
Catch advice **		1800
% advice change ***		-12.2%

* The figures in the table are rounded. Calculations were done with unrounded inputs and computed values may not match exactly when calculated using the rounded figures in the table.

** [Advice for 2020] × [index ratio].

*** Advice value 2021 relative to the advice value 2020 (2050 tonnes).

History of the advice, catch, and management

Table 3 Black-bellied anglerfish in divisions 8.c and 9.a. ICES advice and official catches. All weights are in tonnes.

Year	ICES advice	Catches corresponding to advice for combined <i>Lophius</i> species	Catches corresponding to advice for <i>L. budegassa</i>	Agreed TAC *	ICES catches (combined <i>Lophius</i> species)	ICES catches for <i>L. budegassa</i>
1987	Not dealt with	-		12000	8973	3832
1988	Not dealt with	-		12000	10021	3700
1989	Not dealt with	-		12000	7574	2578
1990	Not dealt with	-		12000	6124	2334
1991	No advice	-		12000	5802	2162
1992	No advice	-		12000	5493	2111
1993	No long-term gain in increasing F	-		13000	4556	2227
1994	No advice	-		13000	3587	1580
1995	If required a precautionary TAC	-		13000	3677	1843
1996	If required a precautionary TAC	-		13000	4584	1629
1997	If required a precautionary TAC	-		13000	5527	1813
1998	Restrict catch to < 80% recent levels			10000	5070	2089
1999	Reduce F to F _{pa}	4200		8500	3811	1879
2000	60% reduction in F	1600		6800	2628	1369
2001	50% reduction in F	2800		6000	1801	1013
2002	30% reduction in F	3500		4800	1900	810
2003	5% reduction in F	3200		4000	3258	934
2004	F = 0 or recovery plan **	0 **		2300	4250	993
2005	F = 0 or recovery plan	0		2000	4757	933
2006	F = 0 or recovery plan	0		2000	4158	1161
2007	F = 0 or recovery plan	0		2000	3684	1306
2008	F = 0 or recovery plan	0		2000	3328	957
2009	Same advice as last year	0		1800	3080	774
2010	F = 0 or management plan	0		1500	2372	754
2011	MSY framework	1500	480	1571	2179	948
2012	MSY framework	3300	1100	3300	2645	1141
2013	MSY transition	2090	740	2475	2710	1071
2014	MSY approach	2629	1153	2629	3130	998

Year	ICES advice	Catches corresponding to advice for combined <i>Lophius</i> species	Catches corresponding to advice for <i>L. budegassa</i>	Agreed TAC *	ICES catches (combined <i>Lophius</i> species)	ICES catches for <i>L. budegassa</i>
2015	MSY approach	2987	1050	2987	2970	1047
2016	MSY approach ***	≤ 2413	≤ 1070	2569	2948	1014
2017	MSY approach ***		≤ 2122	3955	2307	861
2018	MSY approach ***		≤ 2349	3955	1916	773
2019	Precautionary approach ***		≤ 2212	4166	1577 ^	669 ^
2020	Precautionary approach ***		≤ 2050	4023		
2021	Precautionary approach ***		≤ 1800			

* For *Lophius piscatorius* and *L. budegassa* combined. For Division 8.c and subareas 9 and 10; EU waters of CECAF 34.1.1.

** Single-stock boundary and the exploitation of this stock should be conducted in the context of mixed fisheries, protecting stocks outside safe biological limits.

*** Advice is for catch.

^ Preliminary.

Summary of the assessment

Table 4 Black-bellied anglerfish in divisions 8.c and 9.a. Assessment summary. High and Low refer to 95% confidence intervals. All weights are in tonnes.

Year	Relative biomass			Catches	Relative fishing pressure		
	Relative B	High	Low		Relative F	High	Low
1980	1.41	2.9	0.68	2110	0.79	1.65	0.38
1981	1.44	2.7	0.77	2300	0.82	1.62	0.41
1982	1.47	2.6	0.83	2369	0.85	1.61	0.44
1983	1.52	2.7	0.87	2379	0.87	1.64	0.46
1984	1.33	2.3	0.77	1929	0.87	1.62	0.47
1985	1.08	1.83	0.64	1833	0.85	1.57	0.46
1986	1.22	2.0	0.73	2563	0.91	1.64	0.50
1987	1.66	2.8	0.98	3832	1.08	1.97	0.59
1988	1.70	2.9	0.98	3700	1.29	2.4	0.69
1989	1.21	2.1	0.70	2578	1.29	2.4	0.68
1990	1.05	1.83	0.61	2334	1.23	2.3	0.65
1991	0.95	1.65	0.55	2162	1.25	2.4	0.66
1992	0.88	1.52	0.51	2111	1.31	2.5	0.69
1993	0.79	1.36	0.46	2227	1.50	2.8	0.80
1994	0.63	1.06	0.37	1580	1.49	2.8	0.79
1995	0.64	1.07	0.38	1843	1.38	2.5	0.75
1996	0.74	1.24	0.44	1629	1.28	2.4	0.69
1997	0.79	1.31	0.47	1813	1.10	2.0	0.59
1998	1.08	1.84	0.63	2089	1.01	1.90	0.54
1999	1.21	2.1	0.70	1879	0.93	1.78	0.48
2000	1.06	1.87	0.60	1369	0.83	1.62	0.43
2001	0.80	1.41	0.45	1013	0.78	1.51	0.40
2002	0.62	1.08	0.36	810	0.73	1.41	0.38
2003	0.62	1.08	0.36	934	0.74	1.41	0.39
2004	0.66	1.13	0.38	993	0.81	1.55	0.43
2005	0.59	1.01	0.35	933	0.80	1.53	0.42
2006	0.72	1.22	0.42	1161	0.74	1.41	0.39
2007	1.04	1.80	0.59	1306	0.69	1.33	0.36
2008	1.07	1.84	0.62	957	0.58	1.11	0.30
2009	0.91	1.53	0.54	774	0.47	0.88	0.25
2010	1.00	1.63	0.61	754	0.40	0.73	0.22

Year	Relative biomass			Catches	Relative fishing pressure		
	Relative B	High	Low		Relative F	High	Low
2011	1.20	1.96	0.74	948	0.37	0.68	0.21
2012	1.49	2.4	0.92	1141	0.39	0.70	0.21
2013	1.61	2.6	1.01	1071	0.37	0.66	0.21
2014	1.66	2.6	1.07	998	0.33	0.57	0.186
2015	1.84	2.8	1.20	1047	0.30	0.52	0.170
2016	2.06	3.2	1.34	1014	0.28	0.49	0.162
2017	1.86	2.8	1.23	861	0.26	0.45	0.150
2018	1.88	2.8	1.24	773	0.24	0.41	0.137
2019	1.73	2.6	1.14	669	0.22	0.38	0.127
2020	1.67	2.6	1.08				

Sources and references

ICES. 2020. Working Group for the Bay of Biscay and the Iberian Waters Ecoregion (WGBIE). ICES Scientific Reports. 2:49.
<http://doi.org/10.17895/ices.pub.6033>.

Recommended citation: ICES. 2020. Black-bellied anglerfish (*Lophius budegassa*) in divisions 8.c and 9.a (Cantabrian Sea, Atlantic Iberian waters). In Report of the ICES Advisory Committee, 2020. ICES Advice 2020, ank.27.8c9a.
<https://doi.org/10.17895/ices.advice.5923>.

Annex 1

ICES Advice on fishing opportunities, catch, and effort
Bay of Biscay and the Iberian Coast ecoregion
Published 28 June 2019

Black-bellied anglerfish (*Lophius budegassa*) in divisions 8.c and 9.a (Cantabrian Sea, Atlantic Iberian waters)

ICES advice on fishing opportunities

ICES advises that when the precautionary approach is applied, catches in 2020 should be no more than 2050 tonnes.

Management of catches of the two anglerfish species, *Lophius budegassa* and *L. piscatorius*, under a combined species total allowable catch (TAC) prevents effective control of the single-species exploitation rates and could lead to the overexploitation of either species.

Stock development over time

The assessment is indicative of trends only. The stock biomass (B) increased from 2005 to 2016 and has since decreased. Fishing mortality (F) has decreased since 1994.

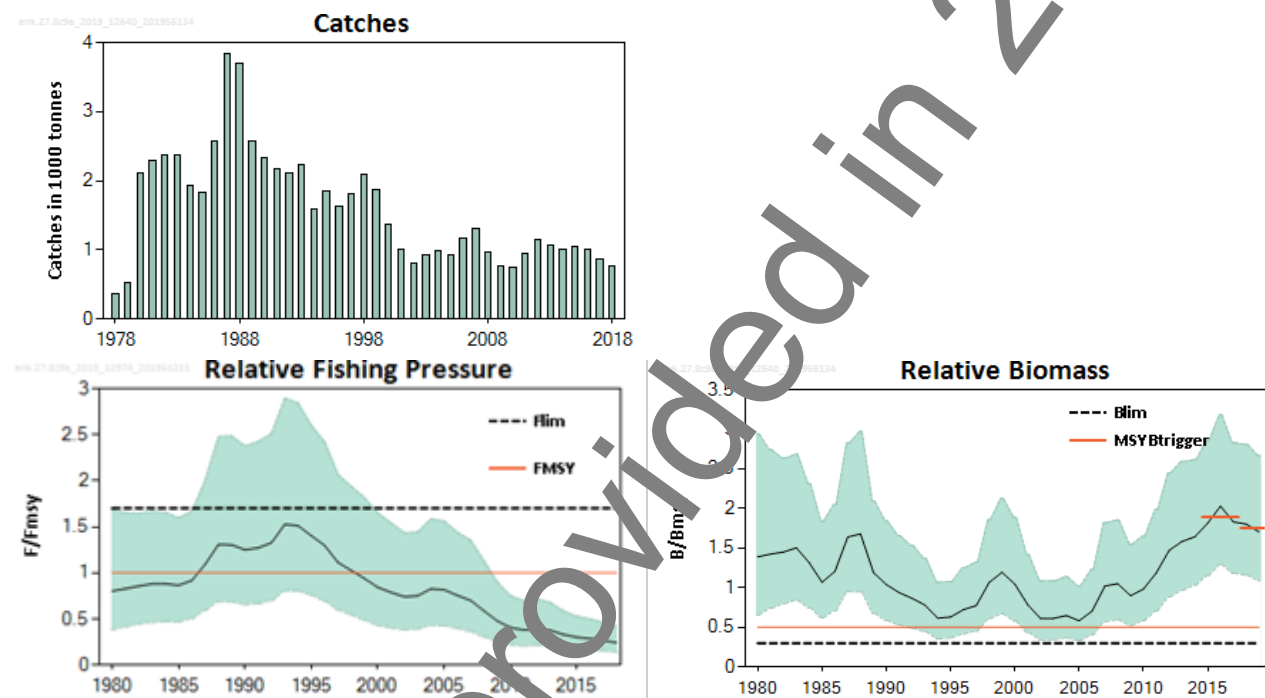


Figure 1 Black-bellied anglerfish in divisions 8.c and 9.a. Summary of the stock assessment: Catches (top left), relative fishing pressure (bottom left), and relative biomass (bottom right) with 95% confidence intervals (shaded area). Fishing pressure and biomass are relative to the average of the time-series. The dashed red lines indicate the average of the relative biomass for 2015 to 2017, and for 2018 to 2019.

Stock and exploitation status

ICES assesses that fishing pressure on the stock is below F_{MSY} and F_{lim} , and that the spawning stock size is above $MSY B_{trigger}$ and B_{lim} .

Table 1 Black-bellied anglerfish in divisions 8.c and 9.a. State of the stock and fishery relative to reference points.

		Fishing pressure				Stock size		
		2016	2017	2018		2017	2018	2019
Maximum sustainable yield	F_{MSY} proxy	✓	✓	✓ Below proxy	MSY	✓	✓	✓ Above trigger
Precautionary approach	F_{pa}, F_{lim}	✓	✓	✓ Below possible reference points	B_{pa}, B_{lim}	✓	✓	✓ Full reproductive capacity
Management plan	F_{MGT}	✓	✓	✓ Below F_{MSY} proxy	B_{MGT}	✓	✓	✓ Above trigger
Qualitative evaluation	-	→	→	→ Decreasing	-	→	→	→ Decreasing

Catch scenarios

The ICES framework for category 3 stocks was applied (ICES, 2012). The relative biomass estimates from the SPiCT analysis were used as the index of stock development. The advice is based on the ratio of the mean of the two latest index values (index A) and the mean of the three preceding values (index B), multiplied by the recent advised catch.

The index is estimated to have decreased by less than 20% and thus the uncertainty cap was not applied.

The fishing mortality is below, and the stock size above, proxies of the F_{MSY} reference points. No additional precautionary buffer was, therefore, applied.

Discarding is considered negligible.

Table 2 Black-bellied anglerfish in divisions 8.c and 9.a. The catch scenario table.*

Index A (2018–2019)		1.75
Index B (2015–2017)		1.89
Index ratio (A/B)		0.93
Uncertainty cap	Not applied	-
Advised catch for 2019 issued in 2018		2212 tonnes
Unwanted catch rate		Negligible
Precautionary buffer	Not applied	-
Catch advice **		2050
% advice change ^		-7.3%

*The figures in the table are rounded. Calculations were done with unrounded inputs and computed values may not match exactly when calculated using the rounded figures in the table.

** [Advice for 2019] × [index ratio].

^ Advice value 2020 relative to the advice value 2019 (2212 tonnes).

The advice is reduced by 7.3% compared to the advice for 2019, reflecting the change in biomass over the past five years.

Quality of the assessment

This stock was benchmarked in 2018 (ICES, 2018a).

The assessment is dependent on commercial landing per unit effort (lpue) series only. Consistency in data gathering and calculation needs to be improved. Stock status estimates are considered to be robust in relation to reference points.

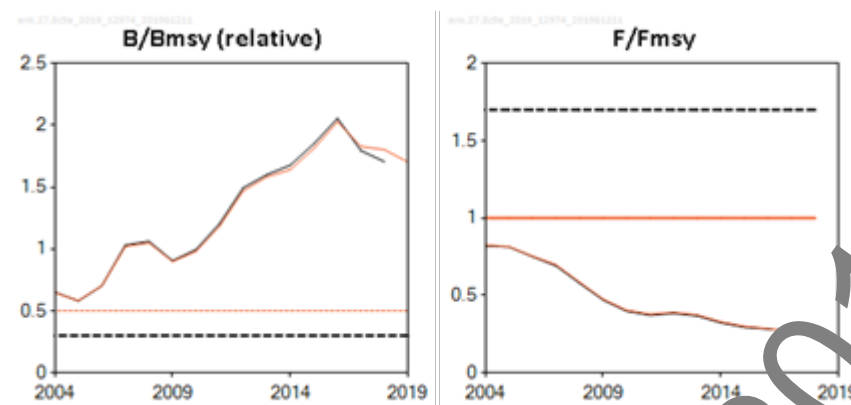


Figure 2 Black-bellied anglerfish in divisions 8.c and 9.a. Relative historical assessment results. The stock was benchmarked in 2018 (ICES, 2018).

Basis of the assessment

Table 3 Black-bellied anglerfish in divisions 8.c and 9.a. The basis of the advice

Advice basis	Precautionary approach
Management plan	The EU multiannual plan (MAP; EU, 2019) for stocks in the Western Waters and adjacent waters applies to this stock. The MAP stipulates that when the F_{msy} ranges are not available, fishing opportunities should be based on the best available scientific advice.

Issues relevant for the advice

The two anglerfish species (*L. piscatorius* and *L. budegassa*) are not completely separated in the landings. A single TAC covers both, and species-specific landings are estimated by ICES (ICES, 2019). ICES considers that management of the catches of the two anglerfish species under a combined TAC prevents effective control of single-species exploitation rates, and could lead to overexploitation of either species.

Reference points

Table 4 Black-bellied anglerfish in divisions 8.c and 9.a. Reference points, values, and their technical basis.

Framework	Reference point	Relative value *	Technical basis	Source
MSY approach	MSY $B_{trigger}$ proxy	$0.5 \times B_{MSY \text{ proxy}} = 0.25 \times K$	Relative value. $B_{MSY \text{ proxy}}$ is estimated directly from the assessment model and changes when the assessment is updated.	ICES (2018a, 2018d)
	$F_{MSY \text{ proxy}}$	$r/2$	Relative value. The $F_{MSY \text{ proxy}}$ is estimated directly from the assessment model and changes when the assessment is updated.	ICES (2018a, 2018d)
Precautionary approach	B_{lim} proxy	$0.3 \times B_{MSY \text{ proxy}}$	Relative value (equilibrium yield at this biomass is 50% of the MSY proxy).	ICES (2018a, 2018d)
	B_{pa}	Not defined		
	F_{lim} proxy	$1.7 \times F_{MSY \text{ proxy}}$	Relative value (the F that drives the stock to the proxy of B_{lim}).	ICES (2018a, 2018d)
	F_{pa}	Not defined		
Management plan	SSB_{mgt}	Not applicable		
	F_{mgt}	Not applicable		
	MAP MSY $B_{trigger}$	$0.5 \times B_{MSY \text{ proxy}} = 0.25 \times K$	MSY $B_{trigger}$ proxy	ICES (2018a, 2018d), EU (2019)
	MAP B_{lim}	$0.3 \times B_{MSY \text{ proxy}}$	B_{lim} proxy	ICES (2018a, 2018d), EU (2019)
	MAP F_{MSY}	$r/2$	$F_{MSY \text{ proxy}}$	ICES (2018a, 2018d), EU (2019)
	MAP range F_{lower}	Not applicable		
	MAP range F_{upper}	Not applicable		

* Fishing mortality is estimated only in relation to the $F_{MSY \text{ proxy}}$, and total stock biomass is estimated only in relation to the $B_{MSY \text{ proxy}}$. These reference points are only used to assess stock status for the application of the PA buffer. K is the carrying capacity and r is the intrinsic biomass growth rate.

Basis of the assessment

Table 5 Black-bellied anglerfish in divisions 8.c and 9.a. Basis of the assessment and advice.

ICES stock data category	3 (ICES, 2018c).
Assessment type	Relative results of surplus production model (SPiCT; ICES, 2018a, 2018b) that uses landings in the model.
Input data	Commercial catches (international landings); three commercial indices (SPCORT8c 1982–2012, PT.crus.tr 1982–2018, and PT.fish.tr 1989–2018).
Discards and bycatch	Discards is assumed to be negligible.
Indicators	None.
Other information	Last benchmark in 2018 (ICES, 2018a).
Working group	Working Group for the Bay of Biscay and the Iberian Waters Ecoregion (WGBIE).

Information from stakeholders

There is no additional available information.

History of the advice, catch, and management

Table 6 Black-bellied anglerfish in divisions 8.c and 9.a. ICES advice and official catches. All weights are in tonnes.

Year	ICES advice	Catches corresponding to advice for combined <i>Lophius</i> species	Catches corresponding to advice for <i>L. budegassa</i>	Agreed TAC *	ICES catches for combined <i>Lophius</i> species	ICES catches for <i>L. budegassa</i>
1987	Not dealt with	-		12000	6073	3832
1988	Not dealt with	-		12000	10021	3700
1989	Not dealt with	-		12000	7574	2578
1990	Not dealt with	-		12000	6124	2334
1991	No advice	-		12000	5802	2162
1992	No advice	-		12000	5493	2111
1993	No long-term gain in increasing F	-		13000	4556	2227
1994	No advice	-		13000	3587	1580
1995	If required a precautionary TAC	-		13000	3677	1843
1996	If required a precautionary TAC	-		13000	4584	1629
1997	If required a precautionary TAC	-		13000	5527	1813
1998	Restrict catch to < 80% recent levels			10000	5070	2089
1999	Reduce F to F_{pa}	4200		8500	3811	1879
2000	60% reduction in F	1600		6800	2628	1369
2001	50% reduction in F	2800		6000	1801	1013
2002	30% reduction in F	3500		4800	1900	810
2003	5% reduction in F	2000		4000	3258	934
2004	F = 0 or recovery plan **	0 **		2300	4250	993
2005	F = 0 or recovery plan	0		2000	4757	933
2006	F = 0 or recovery plan	0		2000	4158	1161
2007	F = 0 or recovery plan	0		2000	3684	1306
2008	F = 0 or recovery plan	0		2000	3328	957
2009	Same advice as last year	0		1800	3080	774
2010	F = 0 or management plan	0		1500	2372	754
2011	MSY framework	1500	480	1571	2179	948
2012	MSY framework	3300	1100	3300	2645	1141
2013	MSY transition	2090	740	2475	2710	1071
2014	MSY approach	2629	1153	2629	3130	998
2015	MSY approach	2987	1050	2987	2970	1047

Year	ICES advice	Catches corresponding to advice for combined <i>Lophius</i> species	Catches corresponding to advice for <i>L. budegassa</i>	Agreed TAC *	ICES catches for combined <i>Lophius</i> species	ICES catches for <i>L. budegassa</i>
2016	MSY approach ^	≤ 2413	≤ 1070	2569	2949	1014
2017	MSY approach ^		≤ 2122	3955	2317	861
2018	MSY approach ^		≤ 2349	3955	1916	764
2019	Precautionary approach ^		≤ 2212	4166		
2020	Precautionary approach ^		≤ 2050			

* For *Lophius piscatorius* and *L. budegassa* combined. For Division 8.c and subareas 9 and 10; EU waters of CECAF 34.1.1.

** Single-stock boundary and the exploitation of this stock should be conducted in the context of mixed fisheries, protecting stocks outside safe biological limits.

^ Advice is for catch.

History of the catch and landings

Table 7 Black-bellied anglerfish in divisions 8.c and 9.a. Catch distribution by fleet in 2018 as estimated by ICES.

Table 1: Black Seamed Angelfish in divisions 016 and 516: catch distribution by gear in 2018 as estimated by ICES						
Catch (2018)	Landings					Discards
764 tonnes	48% Bottom trawl	24% Artisanal	26% Gillnet	1.48% Unallocated / non-reported	< 1% Others	Negligible
	764 tonnes					

Table 8 Black-bellied anglerfish in divisions 8.c and 9.a. History of commercial catch; both the official and ICES estimated values are presented by area for each country participating in the fishery. All weights are in tonnes.

Year	Division 8.c							Division 9.a					Divisions 8.c and 9.a				
	Spain			France			Total	Spain			Portugal		Total	Subtotal	Unallocated / non-reported	Total	
	Trawl	Gillnet	Others	Trawl	Gillnet	Others		Trawl	Gillnet	Others	Trawl	Artisanal					
1978	n/a	n/a					n/a	248				n/a	107	355	355		355
1979	n/a	n/a					n/a	306				n/a	210	516	516		516
1980	1203	207					1409	385				n/a	315	700	2110		2110
1981	1159	309					1468	505				n/a	327	832	2300		2300
1982	827	413					1240	841				n/a	288	1129	2369		2369
1983	1064	188					1252	699				n/a	428	1127	2379		2379
1984	514	176					690	558				223	458	1239	1929		1929
1985	366	123					489	437				254	653	1344	1833		1833
1986	553	585					1138	379				200	847	1425	2563		2563
1987	1094	888					1982	813				232	804	1849	3832		3832
1988	1058	1019					2068	684				188	760	1632	3700		3700
1989	648	351					999	764				272	542	1579	2578		2578
1990	491	142					633	689				387	625	1701	2334		2334
1991	503	76					579	559				309	716	1584	2162		2162
1992	451	57					508	485				287	832	1603	2111		2111
1993	516	92					809	627				196	596	1418	2227		2227
1994	542	201					743	475				79	283	837	1580		1580
1995	924	104					1029	615				68	131	814	1843		1843
1996	849	105					945	342				133	210	684	1629		1629
1997	810	198					998	524				81	210	815	1813		1813
1998	518	148					896	681				181	332	1194	2089		2089
1999	565	127					692	671				110	406	1187	1879		1879
2000	441	73					514	377				142	336	855	1369		1369
2001	383	69					452	190				101	269	560	1013		1013
2002	202	74		10	1	0	288	234	0	0		75	213	522	810		810

Year	Division 8.c							Division 9.a						Divisions 8.c and 9.a		
	Spain			France			Total	Spain			Portugal		Total	Subtotal	Allocated / non-reported	Total
	Trawl	Gillnet	Others	Trawl	Gillnet	Others		Trawl	Gillnet	Others	Trawl	Artisanal				
2003	279	49		9	0	0	338	305	0	0	68	224	597	934		934
2004	251	120		14	5	0	391	285	0	0	50	267	603	993		993
2005	273	97		26	9	0	405	283	0	0	31	214	527	933		933
2006	323	124		12	1	0	460	541	0	0	39	121	705	1161		1161
2007	372	68		4	1	0	444	684	0	0	66	111	861	1306		1306
2008	386	70		5	1	0	462	336	0	0	40	119	455	957		957
2009	301	148		3	1	0	454	172	0	0	34	114	320	774		774
2010	319	81		2	1	0	403	197	0	0	70	14	351	754		754
2011	214	115	32	3	0	0	364	157	60	98	75	119	410	874	74	948
2012	161	83	22	2	0	0	268	109	40	90	156	370	720	1033	109	1141
2013	221	135	14	4	1	0	375	95	55	90	100	258	598	973	98	1071
2014	187	126	7	5	2	0	326	120	47	4	116	26	572	898	100	998
2015	233	141	1	2	2	0	380	103	62	2	126	222	515	895	152	1047
2016	203	118	5	2	2	0	330	103	79	2	126	57	560	889	125	1014
2017	163	153	0	1	3	0	319	109	62	1	68	302	542	861		861
2018	186	156	1	3	4	0	350	126	37	1	52	185	402	752	11	764

Summary of the assessment

Table 9 Black-bellied anglerfish in divisions 8.c and 9.a. Assessment summary. High and low refer to 95% confidence intervals. All weights are in tonnes.

Year	Relative Biomass	High	Low	Catches	Relative Fishing Pressure	High	Low
1980	1.39	2.94	0.66	1110	0.80	1.68	0.38
1981	1.42	2.74	0.74	2300	0.83	1.65	0.41
1982	1.45	2.63	0.8	2369	0.86	1.65	0.45
1983	1.5	2.68	0.84	2379	0.88	1.67	0.46
1984	1.31	2.31	0.75	1929	0.88	1.66	0.47
1985	1.07	1.84	0.62	1833	0.86	1.60	0.47
1986	1.21	2.05	0.71	2563	0.92	1.67	0.50
1987	1.64	2.82	0.95	3832	1.09	2.0	0.60
1988	1.68	2.97	0.95	3700	1.31	2.5	0.69
1989	1.19	2.09	0.68	2578	1.30	2.5	0.68
1990	1.04	1.84	0.59	2334	1.25	2.4	0.66
1991	0.94	1.65	0.53	2162	1.27	2.4	0.67
1992	0.87	1.53	0.49	2111	1.33	2.5	0.70
1993	0.78	1.37	0.45	2227	1.53	2.9	0.80
1994	0.62	1.07	0.36	1580	1.51	2.8	0.80
1995	0.63	1.08	0.37	1843	1.40	2.6	0.76
1996	0.72	1.25	0.42	1629	1.30	2.4	0.69
1997	0.77	1.32	0.45	1813	1.11	2.1	0.60
1998	0.7	1.86	0.61	2089	1.03	1.94	0.54
1999	1.19	2.13	0.67	1879	0.94	1.82	0.49
2000	1.05	1.89	0.58	1369	0.84	1.65	0.43
2001	0.79	1.42	0.44	1013	0.79	1.54	0.40
2002	0.61	1.08	0.34	810	0.74	1.44	0.38
2003	0.61	1.09	0.34	934	0.75	1.44	0.39
2004	0.65	1.14	0.37	993	0.83	1.59	0.43
2005	0.58	1.02	0.33	933	0.82	1.56	0.43
2006	0.70	1.22	0.40	1161	0.75	1.44	0.40
2007	1.02	1.82	0.57	1306	0.70	1.35	0.36
2008	1.05	1.85	0.60	957	0.59	1.13	0.30
2009	0.90	1.55	0.52	774	0.48	0.90	0.25

Year	Relative Biomass	High	Low	Catches	Relative Fishing Pressure	High	Low
2010	0.98	1.65	0.59	754	0.40	0.75	0.22
2011	1.18	1.98	0.71	948	0.38	0.70	0.21
2012	1.47	2.45	0.88	1141	0.39	0.72	0.21
2013	1.58	2.59	0.97	1071	0.37	0.68	0.21
2014	1.64	2.61	1.03	998	0.33	0.59	0.186
2015	1.81	2.86	1.15	1047	0.30	0.53	0.171
2016	2.03	3.18	1.29	1014	0.29	0.50	0.164
2017	1.83	2.83	1.18	861	0.27	0.46	0.152
2018	1.80	2.81	1.16	764	0.24	0.42	0.139
2019	1.70	2.67	1.09				

Sources and references

EU. 2019. Regulation (EU) 2019/472 of the European Parliament and of the Council of 19 March 2019 establishing a multiannual plan for stocks fished in the Western Waters and adjacent waters, and for fisheries exploiting those stocks, amending Regulations (EU) 2016/1139 and (EU) 2018/973, and repealing Council Regulations (EC) No 811/2004, (EC) No 2166/2005, (EC) No 388/2006, (EC) No 509/2007 and (EC) No 1300/2008. Official Journal of the European Union, L 83: 1–17. <http://data.europa.eu/eli/reg/2019/472/oj>

ICES. 2012. ICES Implementation of Advice for Data-limited Stocks in 2012 in its 2012 Advice. ICES CM 2012/ACOM:68. 42 pp. <https://doi.org/10.17895/ices.pub.5322>

ICES. 2018a. Report of the Benchmark Workshop on Anglerfish Stocks in the ICES Area (WKANGLER), 12–16 February 2018, Copenhagen, Denmark. ICES CM 2018/ACOM:31. 177 pp. <https://doi.org/10.17895/ices.pub.5342>

ICES. 2018b. Report of the Working Group on Mixed-Fisheries Advice (WGMIXFISH-ADVICE), 21–25 May 2018, ICES Headquarters, Copenhagen, Denmark. ICES CM 2018/ACOM:1. In preparation.

ICES. 2018c. Advice basis. In Report of the ICES Advisory Committee, 2018. ICES Advice 2018, Book 1, Section 1.2. <https://doi.org/10.17895/ices.pub.4503>

ICES. 2018d. Report of the Working Group for the Bay of Biscay and the Iberian Waters Ecoregion (WGBIE), 3–10 May 2018, ICES HQ, Copenhagen, Denmark. ICES CM 2018/ACOM:12. 42 pp. <https://doi.org/10.17895/ices.pub.5343>

ICES. 2019. Working Group for the Bay of Biscay and the Iberian Waters Ecoregion (WGBIE). ICES Scientific Reports. 1:31. 692 pp. <http://doi.org/10.17895/ices.pub.5292>

Recommended citation: ICES. 2019. Black-bellied anglerfish (*Lophius budegassa*) in divisions 8.c and 9.a (Cantabrian Sea, Atlantic Iberian waters). In Report of the ICES Advisory Committee, 2019. ICES Advice 2019, ank.27.8c9a, <https://doi.org/10.17895/ices.advice.4756>