

9.3.22 Ling (*Molva molva*) in Division Vb (Faroes Grounds)

ICES stock advice

ICES advises that when the precautionary approach is applied, effort should be adjusted such that catches should be no more than 6730 tonnes in each of the years 2016 and 2017.

Stock development over time

Catches in the last five years have been variable. The Faroese summer survey biomass indices show that this stock has increased since 2003.

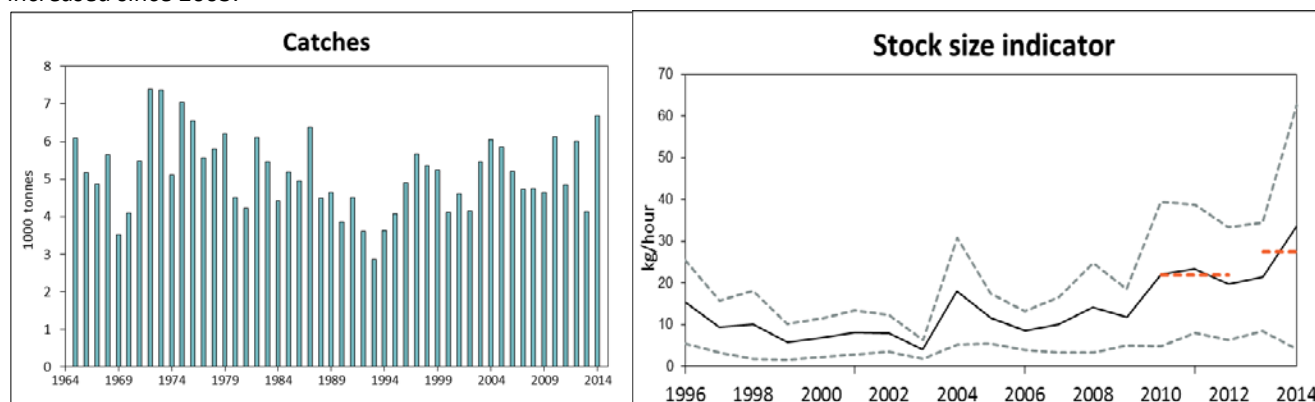


Figure 9.3.22.1 Ling in Division Vb. Left: Catches in Division Vb. Right: Cpue (kg h⁻¹) in the Faroese summer groundfish survey. The dashed horizontal lines indicate the average stock size index of the respective year range used to calculate the advice.

Stock and exploitation status

Table 9.3.22.1 Ling in Division Vb. State of the stock and fishery, relative to reference points.

		Fishing pressure				Stock size			
		2012	2013	2014		2012	2013	2014	
Maximum Sustainable Yield	F _{MSY}	?	?	?	Undefined	MSY	?	?	?
Precautionary approach	F _{pa} , F _{lim}	?	?	?	Undefined	B _{trigger}	?	?	?
Management Plan	F _{MGT}	-	-	-	Not applicable	B _{pa} , B _{lim}	?	?	?
Qualitative evaluation	-	?	?	?	Unknown	SSB _{MGT}	-	-	-
							↘	↗	↗
									Increasing

Catch options

The ICES framework for category 3 stocks was applied (ICES, 2012). The standardized cpue series from the Faroese summer groundfish survey was applied as index for the stock development. The advice is based on a comparison of the two latest index values (index A) with the three preceding values (index B), combined with the average catch in 2012–2014. The index is estimated to have increased by more than 20%, which means that the uncertainty cap was applied in estimating the catch advice. The stock status relative to candidate reference points is unknown, and the precautionary buffer based on effort was advised in 2012. Discarding is considered negligible.

Table 9.3.22.2 Ling in Division Vb. For stocks in ICES categories 3–6, one catch option is provided.

Index A (2013–2014)		27.4
Index B (2010–2012)		21.7
Index ratio (A/B)		1.26
Uncertainty cap	Applied	1.2
Average catch (2012, 2013, 2014)		5 608 t
Discard rate		Negligible
Precautionary buffer	Not Applied	-
Catch advice *		6 730 t

* (Previous advice × cap).

Basis of the advice

Table 9.3.22.4 Ling in Division Vb. The basis of the advice.

Advice basis	Precautionary approach
Management plan	There is no species-specific management plan for this stock.

Quality of the assessment

The advice is based on the ICES framework for category 3 stocks which provides catch advice. ICES is not able to provide direct effort advice because effort data have not been provided.

Issues relevant for the advice

No additional information to present for this stock.

Reference points

No reference points are defined for this stock.

Basis of the assessment

Table 9.3.22.4 Ling in Division Vb. The basis of the assessment.

ICES stock data category	3.2 (ICES, 2015a).
Assessment type	Survey cpue trends-based assessment (ICES, 2015b).
Input data	Summer groundfish trawl survey (kg hour ⁻¹).
Discards and bycatch	Discarding is considered negligible.
Indicators	None.
Other information	None.
Working group	Working Group on the Biology and Assessment of Deep-Sea Fisheries Resources (WGDEEP).

Information from stakeholders

There is no available information.

History of advice, catch, and management

Table 9.3.22.7 Ling in Division Vb. History of ICES advice, the agreed TAC, and ICES estimates of catches. Weights in tonnes.

Year	ICES advice	Predicted catch corresp. to advice	TAC EU Subarea V (EU and international waters)	TAC EU Division Vb (Faroese waters)**	TAC Faroes Division Vb	ICES landings Division Vb
2003	30% reduction on fishing effort***		54	3 600	-	5 453
2004	Biennial***		54	3 600	-	6 039
2005	No increased in effort		48	3 600	-	5 849
2006	Biennial			3 065	-	5 213
2007	No increased in effort	-	34	3 065	-	4 731
2008	Biennial	-	34	3 065	-	4 746
2009	No increased in effort	-	34	3 065	-	4 643
2010	Biennial	-	34	2 700	-	6 129
2011	No increase in effort and a reduction in catches should be considered	-	33	0	-	4 843
2012	No new advice, same as 2011	-	33	0	--	6 011
2013	20% decrease in effort	-	33	0	-	4 132
2014	No new advice, same as 2013	-	-	-	-	6 684*
2015	Same effort advised as for 2013	-	-	-	-	
2016	Adjust effort corresponding to catch advice	6 730				
2017	Biennial	6 730				

* Preliminary value.

** TAC for ling and blue ling.

*** Advice for ling in the Northeast Atlantic.

History of catch and landings

Table 9.3.22.6 Ling in Division Vb. Catch distribution by fleet in 2014 as estimated by ICES.

Table 2: Data on longline catches and discards by gear in 2007-2008 estimated by 2008.				
Total catch	Commercial landings			Commercial discards
6.684 kt	72% longliners	27% trawlers	1% other gear types	Negligible
	6.684 kt			

Table 9.3.22.7 Ling in Division Vb. History of official commercial catch by country and area.

Year	Subdivision Vb ₁									Subdivision Vb ₂				Division Vb
	Denmark (**)	Faroes	France	Germany	Norway	E&W (**)	Scotland (**)	Russia	Total Vb ₁	Faroes	France	Norway	Total Vb ₂	Total Vb
1988	42	1 383	53	4	884	1	5		2 372	832		1 284	2 116	4 488
1989		1 498	44	2	1 415		3		2 962	362		1 328	1 690	4 652
1990		1 575	36	1	1 441		9		3 062	162		633	795	3 857
1991		1 828	37	2	1 594		4		3 465	492		555	1 047	4 512
1992		1 218	3		1 153	15	11		2 400	577		637	1 214	3 614
1993		1 242	5	1	921	62	11		2 242	282		332	614	2 856
1994		1 541	6	13	1 047	30	20		2 657	479		486	965	3 622
1995		2 789	4	13	446	2	32		3 286	281		503	784	4 070
1996		2 672			1 284	12	28		3 996	102		798	900	4 896
1997		3 224	7		1 428	34	40		4 733	526		398	924	5 657
1998		2 422	6		1 452	4	145		4 029	511		819	1 330	5 359
1999		2 446	17	3	2 034		71		4 571	164	4	498	666	5 238
2000		2 103	7	1	1 305	2	61		3 479	229	1	399	629	4 109
2001		2 069	14	3	1 496	5	99		3 686	420	6	497	923	4 609
2002		1 638	6	2	1 640	3	239		3 528	150	4	457	611	4 139
2003		2 139	12	2	1 526	3	215		3 897	624	4	927	1 555	5 453
2004		2 733	15	1	1 799	3	178	2	4 731	1 058	3	247	1 308	6 039
2005		2 886	3		1 553	3	175		4 620	575	7	647	1 229	5 849
2006	3	3 563	6		850		136		4 558	472	6	177	655	5 213
2007	2	3 004	9		1 071		6		4 092	327	4	309	640	4 731
2008		3 354	4		740	32	25	11	4 166	458	3	120	580	4 747
2009	13	3 471	2		419		270		4 174	270	1	198	469	4 643
2010	28	4 906	2		442		121		5 500	393	1	236	630	6 129
2011	49	4 270	2						4 321	522	0		522	4 843
2012	117	5 452	7						5 576	434	1		435	6 011
2013	3	3 734	7						3 744	387	1		388	4 132
2014*		5 653	9		308		36	13	6 019	276		389	665	6 684

* Preliminary.

** Includes Subdivision Vb₂.

*** Greenland.

Summary of the assessment

Table 9.3.22.8 Ling in Division Vb. Mean cpue from the summer groundfish trawl survey (kg hour⁻¹).

Year	Mean cpue	Standard error
1996	15.3	5.1
1997	9.4	3.2
1998	9.9	4.1
1999	5.8	2.2
2000	6.8	2.3
2001	8.1	2.7
2002	7.9	2.2
2003	4.0	1.1
2004	17.9	6.5
2005	11.4	3.1
2006	8.4	2.4
2007	9.9	3.4
2008	14.0	5.5
2009	11.7	3.4
2010	22.1	8.8
2011	23.3	7.9
2012	19.8	7.0
2013	21.4	6.7
2014	33.4	14.9

Sources and references

- ICES. 2012. ICES Implementation of Advice for Data-limited Stocks in 2012 in its 2012 Advice. ICES CM 2012/ACOM:68. 42 pp.
- ICES. 2015a. Advice basis. *In* Report of the ICES Advisory Committee, 2015. ICES Advice 2015, Book 1. In preparation.
- ICES. 2015b. Report of the Working Group on the Biology and Assessment of Deep-Sea Fisheries Resources (WGDEEP), 20–27 March 2015, ICES Headquarters, Copenhagen. ICES CM 2015/ACOM:17.