

ECOREGION Widely distributed and migratory stocks
STOCK Red (= blackspot) seabream (*Pagellus bogaraveo*) in Subarea X
 (Azores region)

Advice for 2015 and 2016

ICES advises on the basis of the data-limited stocks that annual catches should be no more than 400 t tonnes in 2015 and 2016.

Stock status

Fishing pressure		
		2011–2013
MSY (F_{MSY})	?	Unknown
Precautionary approach (F_{pa}, F_{lim})	?	Unknown
Qualitative evaluation	?	Unknown
Stock size		
		2009–2013
MSY ($B_{trigger}$)	?	Unknown
Precautionary approach (B_{pa}, B_{lim})	?	Unknown
Qualitative evaluation	↘	Decreasing

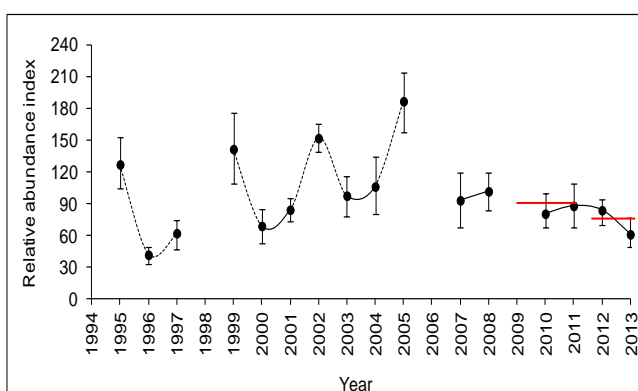
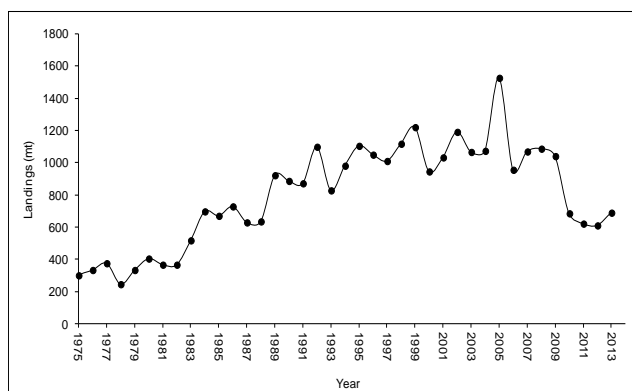


Figure 9.3.22.3.1 Red (= blackspot) seabream in Subarea X. Left: Total landings from Subdivision Xa₂ (Azores). Right: Survey longline abundance indices in number and 95% confidence interval in Subdivision Xa₂.

The survey index has been variable with a small decline in the last two years. Landings have decreased since 2005.

Management plans

No specific management objectives are known to ICES.

Biology

See Section 9.3.22 for details on biology.

The fisheries

Red seabream has been caught in hook-and-line fisheries off the Azores since the 16th century. There are now targeted artisanal handline and longline fisheries in Subdivision Xa₂. Historically, improvements in fishing technology have taken place in the targeted handline and longline fisheries. These include the introduction of bottom longlines and bigger fishing vessels.

Catch distribution Total catch (2013) = 692 t. 100% from handline and longline. Discards are negligible.

Quality considerations

The advice is based on one scientific longline survey abundance time-series, used as an indicator of stock size.

The methods applied to derive quantitative advice for data-limited stocks are expected to evolve as they are further developed and validated. The harvest control rules are expected to stabilize stock size in the short term (3–5 years), but they may not be suitable if the stock size is low and/or the stock overfished.

Scientific basis

Stock data category	3.2 (ICES, 2014a).
Assessment type	Survey cpue trend-based assessment.
Input data	Landings, longline fishery standardized cpue survey.
Discards and bycatch	Not included, considered negligible.
Indicators	None.
Other information	This stock was benchmarked by WKDEEP 2010 (ICES, 2010).
Working group	Working Group on the Biology and Assessment of Deep-Sea Fisheries Resources (WGDEEP).

ECOREGION **Widely distributed and migratory stocks**
STOCK **Red (= blackspot) seabream (*Pagellus bogaraveo*) in Subarea X**
 (Azores region)

Reference points

No reference points have been proposed for this stock.

Outlook for 2015 and 2016

No analytical assessment is available for this stock. Therefore, detailed management options cannot be presented.

ICES approach to data-limited stocks

For data-limited stocks for which an abundance index is available, ICES uses as harvest control rule an index-adjusted *status quo* catch. The advice is based on a comparison of the two most recent index values with the three preceding values, combined with recent catch or landings data. Knowledge about the exploitation status also influences the advised catch.

For this stock the abundance is estimated to have decreased by 17% in the period 2009–2011 (average of the three years) and 2012–2013 (average of the two last years). The PA buffer was applied for the advice given in 2012 leading to an advice of 400 t. A considerably higher TAC was given for 2013–2014 and landings have not declined. Given the decline of the survey index ICES considers that the advice from 2012 (400 t) is still valid for 2015–2016.

Additional considerations

Management considerations

Landings in the last four years are much lower than the current TAC. Measures to ensure balanced exploitation between younger fish (males) and older fish (females) are essential.

Regulations and their effects

In Subarea X, multispecies and multigear fisheries are operating in an area regarded as vulnerable and which is protected by EU regulations banning bottom trawls and bottom gillnets. Local technical regulations are also in force (minimum landing size, hook size regulation, licensing, size restrictions by zone for gears and vessels, and a quota system by island and vessel).

Comparison of the basis of previous assessment and advice

The basis for the advice this year is the same as last year: ICES approach to data-limited stocks.

Sources

- ICES. 2010. Report of the Benchmark Workshop on Deep-water Species (WKDEEP), 17–24 February 2010, Copenhagen, Denmark. ICES CM 2010/ACOM:38. 247 pp.
- ICES. 2014a. Advice basis. In Report of the ICES Advisory Committee, 2014. ICES Advice 2014, Book 1, Section 1.2.
- ICES. 2014b. Report of the Working Group on the Biology and Assessment of Deep-Sea Fisheries Resources (WGDEEP), 4–11 April 2014, ICES Headquarters, Copenhagen. ICES CM 2014/ACOM:17.

Table 9.3.22.3.1 Red (= blackspot) seabream in Subarea X. ICES advice, management, and landings.

Year	ICES Advice	Predicted catch corresp. to advice	TAC EU Subarea X	ICES landings Subarea X
2003	¹	-	1.136	1.1
2004	¹	-	1.136	1.1
2005	¹	-	1.136	1.1
2006	¹	-	1.136	1.0
2007	¹	-	1.136	1.1
2008	¹	-	1.136	1.0
2009	Constrain catches to average catches 2003–2007	1.05	1.136	1.0
2010	Biennial	1.05	1.136	0.67
2011	Less than 1050 t and a reduction in catches should be considered	1.05	1.136	0.62
2012	No new advice, same as 2011	1.05	1.136	0.61
2013	Reduce catches by 40%	0.4	1.022	0.69
2014	No new advice, same as 2013	0.4	0.922	
2015	Same catch advice as 2013	0.4		
2016	No new advice, same as 2015	0.4		

Weights in thousand tonnes.

¹ Advice prior to 2008 included for all areas (see Table 9.4.22.1).

Table 9.3.22.3.2

Red (= blackspot) seabream in Subarea X. ICES estimates of catches by country (tonnes).

Year	Azores (Xa2)	Total
1980	415	415
1981	407	407
1982	369	369
1983	520	520
1984	700	700
1985	672	672
1986	730	730
1987	631	631
1988	637	637
1989	924	924
1990	889	889
1991	874	874
1992	1090	1090
1993	830	830
1994	989	989
1995	1115	1115
1996	1052	1052
1997	1012	1012
1998	1119	1119
1999	1222	1222
2000	947	924
2001	1034	1034
2002	1193	1193
2003	1068	1068
2004	1075	1075
2005	1113	1113
2006	958	958
2007	1063	1070
2008	1089	1089
2009	1042	1042
2010	687	687
2011	624	624
2012	613	613
2013	692	692

Table 9.3.22.3.3 Red (= blackspot) seabream in Subarea X. Longline survey abundance index of *Pagellus bogaraveo*.

Year	Relative abundance index
1995	127.03
1996	41.74
1997	62.13
1998	
1999	141.52
2000	68.93
2001	84.29
2002	151.89
2003	97.52
2004	106.19
2005	186.73
2006	
2007	93.19
2008	101.68
2009	
2010	82.66
2011	87.89
2012	83.80
2013	61.05