

ECOREGION Widely distributed and migratory stocks
STOCK Red (=blackspot) seabream (*Pagellus bogaraveo*) in Subarea X (Azores region)

Advice Summary for 2011 and 2012

Less than 1050 t and a reduction in catches should be considered in order to be consistent with the MSY (see section [1.2.4 of ICES Advisory Report](#)).

Stock status

Fishing mortality	2007	2008	2009
F_{MSY}	Unknown	Unknown	Unknown
F_{PA}/F_{lim}	Unknown	Unknown	Unknown
Spawning Stock Biomass (SSB)	2008	2009	2010
$MSY B_{trigger}$	Unknown	Unknown	Unknown
B_{PA}/B_{lim}	Unknown	Unknown	Unknown

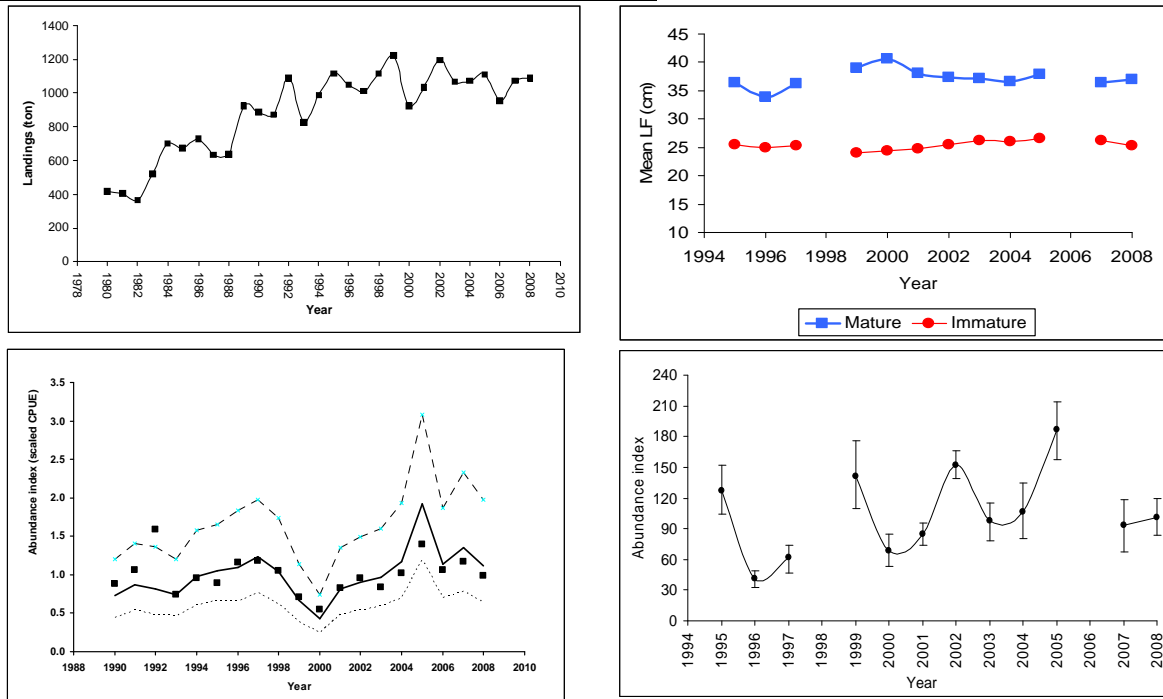


Figure 9.4.19.3.1 Red (=blackspot) seabream in Subarea X. Total landings from Subdivision Xa₂ (Azores); longline survey mean length; annual standardized longline fishery cpue and 95% confidence interval, survey longline abundance indices in number and 95% confidence interval in Subdivision Xa₂.

Management plans

No specific management objectives are known to ICES.

In the light of the EU policy paper on fisheries management (17 May 2010, [COM\(2010\) 241](#)) this assessment unit is classified under category 6. The resulting TAC would be 1050 t.

Biology

Red seabream have a low productivity and they change sex as they age, starting as males and becoming females between ages 4 and 6. Measures to ensure balanced exploitation between younger fish (males) and older fish (females) are essential.

The fisheries

Red seabream have been caught in hook and line fisheries off the Azores since the 16th Century. There are now directed artisanal handline as well as longline fisheries in Subdivision Xa₂. Historically, improvements in fishing technology have taken place in the directed handline and longline fisheries. These include the introduction of bottom longlines and bigger fishing vessels.

Measures to conserve the proportion of females in the populations should be implemented. This would imply that either the gear or the spatial distribution of the fishery need to be adapted so that small fish are not caught.

Scientific basis

Assessment type	Cpue of fisheries dependent and independent trends based assessment
Input data	Landings, longline fishery standardized cpue, longline survey abundance indices and survey length frequencies
Discards and bycatch	-
Other information	This stock was benchmarked by WKDEEP 2010
Working group report	WGDEEP

ECOREGION **Widely distributed and migratory stocks**
STOCK **Red (=blackspot) seabream (*Pagellus bogaraveo*) in Subarea X (Azores region)**

Reference points

No reference points have been defined.

Outlook for 2011

No reliable assessment can be presented for this stock and fishing possibilities cannot be projected.

The 2008-2009 data (landings) for this stock give no reason to change the advice from that given in 2008: "... *should be constrained to recent average catches of [...] 1050 t*", and a reduction in catches should be considered in order to be consistent with the MSY (see section [1.2.4 of ICES Advisory Report](#)).

Additional considerations

In Subarea X, more detailed information of the spatial and temporal distribution of catches is required so that areas which may show evidence of sequential depletion can be better managed.

In Subarea X multispecies and multigear fisheries are operating in an area regarded as vulnerable and which is protected by EU regulations banning bottom trawls and bottom gillnets. Local technical regulations are also in force (minimum landing size, hook size regulation, licensing, size restrictions by zone for gears and vessels, and a quota system by island and vessel).

Sources

ICES. 2010. Report of the Working Group on the Biology and Assessment of Deep-Sea Fisheries Resources, 7–13 April 2010, ICES Headquarters, Copenhagen. ICES CM 2010/ACOM:17

Table 9.4.19.3.1 Red (=blackspot) seabream in Subarea X. Advice, management, and landings.

Year	ICES Advice	Predicted catch corresp. to advice	TAC EU Subarea X	ICES Landings Subarea X
2003	¹	-	1.136	1.1
2004	¹	-	1.136	1.1
2005	¹	-	1.136	1.1
2006	¹	-	1.136	1.0
2007	¹	-	1.136	1.1
2008	¹	-	1.136	1.0
2009	Constrain catches to average catches 2003-07	1.05	1.136	1.0
2010	Biennial	1.05	1.136	
2011	Less than 1050 t and a reduction in catches should be considered	1.05		

Weights in '000 t.

¹ Advice prior to 2008 included for all areas (see Table 9.4.19.1).

Table 9.4.19.3.2 Red (=blackspot) seabream in Subarea X. Working group estimates of landings by country (tonnes).

Year	Azores (Xa2)	Total
1980	415	415
1981	407	407
1982	369	369
1983	520	520
1984	700	700
1985	672	672
1986	730	730
1987	631	631
1988	637	637
1989	924	924
1990	889	889
1991	874	874
1992	1090	1090
1993	830	830
1994	989	989
1995	1115	1115
1996	1052	1052
1997	1012	1012
1998	1119	1119
1999	1222	1222
2000	924	924
2001	1034	1034
2002	1193	1193
2003	1068	1068
2004	1075	1075
2005	1113	1113
2006	958	958
2007	1063	1070
2008	1089	1089
2009	1042	1042