

# Vessel Monitoring System (VMS) and Catch Data in the North East Atlantic Fisheries Commission (NEAFC) regulatory area

Volume 1 : Edition 1 | June 2020

ICES DATA FLOW  
SCHEMATICS



## International Council for the Exploration of the Sea Conseil International pour l'Exploration de la Mer

H. C. Andersens Boulevard 44–46  
DK-1553 Copenhagen V  
Denmark  
Telephone (+45) 33 38 67 00  
Telefax (+45) 33 93 42 15  
[www.ices.dk](https://www.ices.dk)

### Recommended format for purpose of citation:

ICES. 2020. Vessel Monitoring System (VMS) and Catch Data in the North East Atlantic Fisheries Commission (NEAFC) regulatory area. ICES Data Flow Schematics, Vol. 1.: Ed. 1. 8 pp. <https://10.17895/ices.advice.6101>

The material in this report may be reused for non-commercial purposes using the recommended citation. ICES may only grant usage rights of information, data, images, graphs, etc. of which it has ownership. For other third-party material cited in this report, you must contact the original copyright holder for permission. For citation of datasets or use of data to be included in other databases, please refer to the latest ICES data policy on the ICES website. All extracts must be acknowledged. For other reproduction requests please contact the General Secretary.

This document is approved by the ICES Advisory Committee and produced under the auspices of the International Council for the Exploration of the Sea.

Cover Image: Simon Cooper for International Council for the Exploration of the Sea

© 2020 International Council for the Exploration of the Sea

# Contents

Foreword ..... 1

1    Meta-information for this data flow..... 2

2    Data flow schematic..... 3

3    Symbology ..... 5

Version History..... 6

References ..... 7

Author contact information..... 8

## Foreword

Delivering high quality advice is essential to ICES success. To this end, quality assurance of the entire process from data collection to the publication of objective advice is the first priority in the ICES Advisory plan. ICES aims to provide quality control and assurance processes in an end-to-end quality assurance framework that will encompass best practice in data management, data integration, and translation into advice. This series focusses on one aspect of this framework, which is to have well described and standard schematics of each of the data flows coming through the ICES data management systems.

This document focusses on one data flow into the ICES data management systems originating from the North East Atlantic Fisheries Commission (NEAFC) control regulation for its contracting parties. The data are provided under a specific data provision agreement within the overall context of the memorandum of understanding between NEAFC and ICES. These data are not considered as publically accessible (under the general ICES Data Policy), as they contain detailed vessel movements and commercial information about catches.

# 1 Meta-information for this data flow

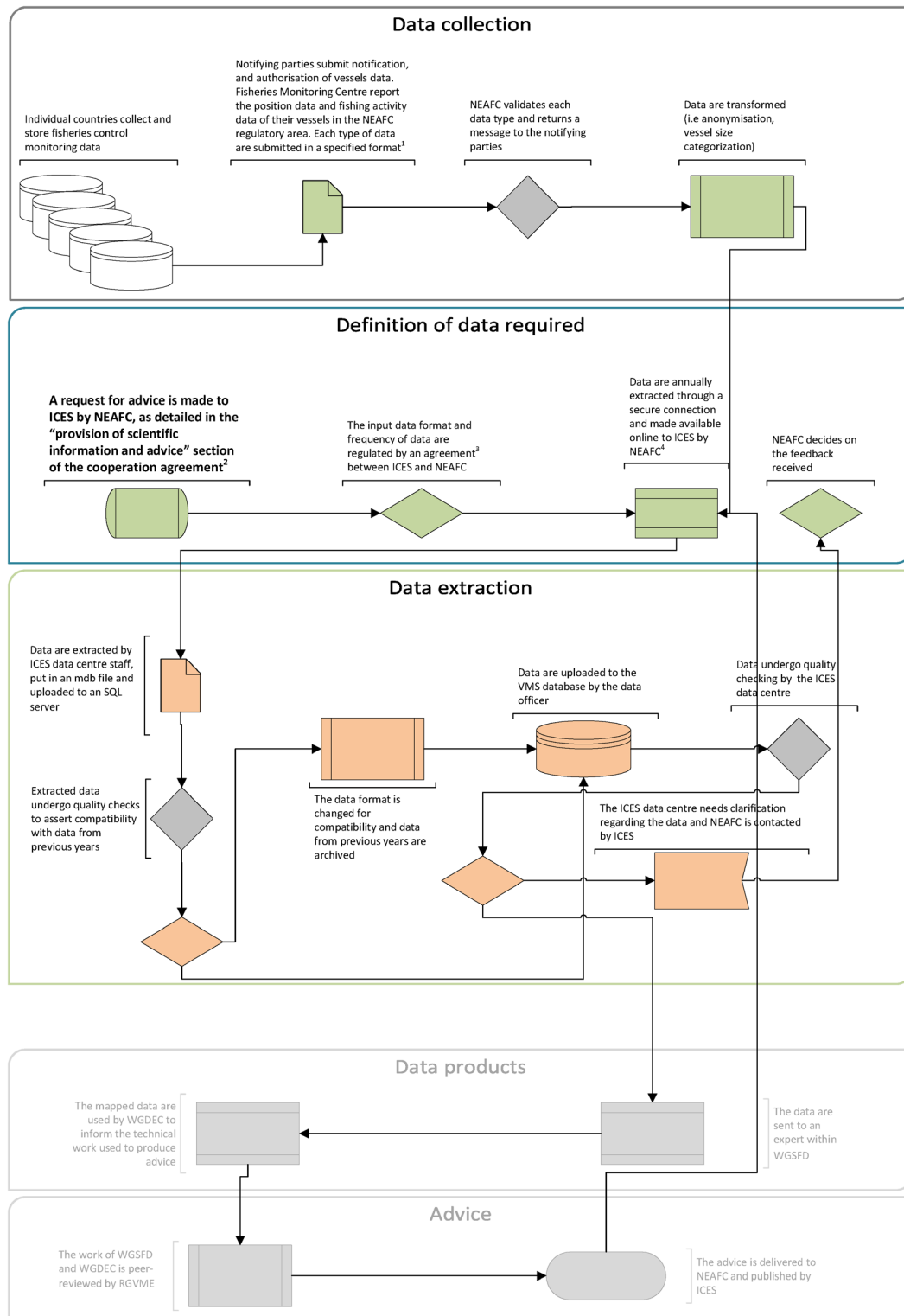
This summary information is gathered by the ICES Data Centre.

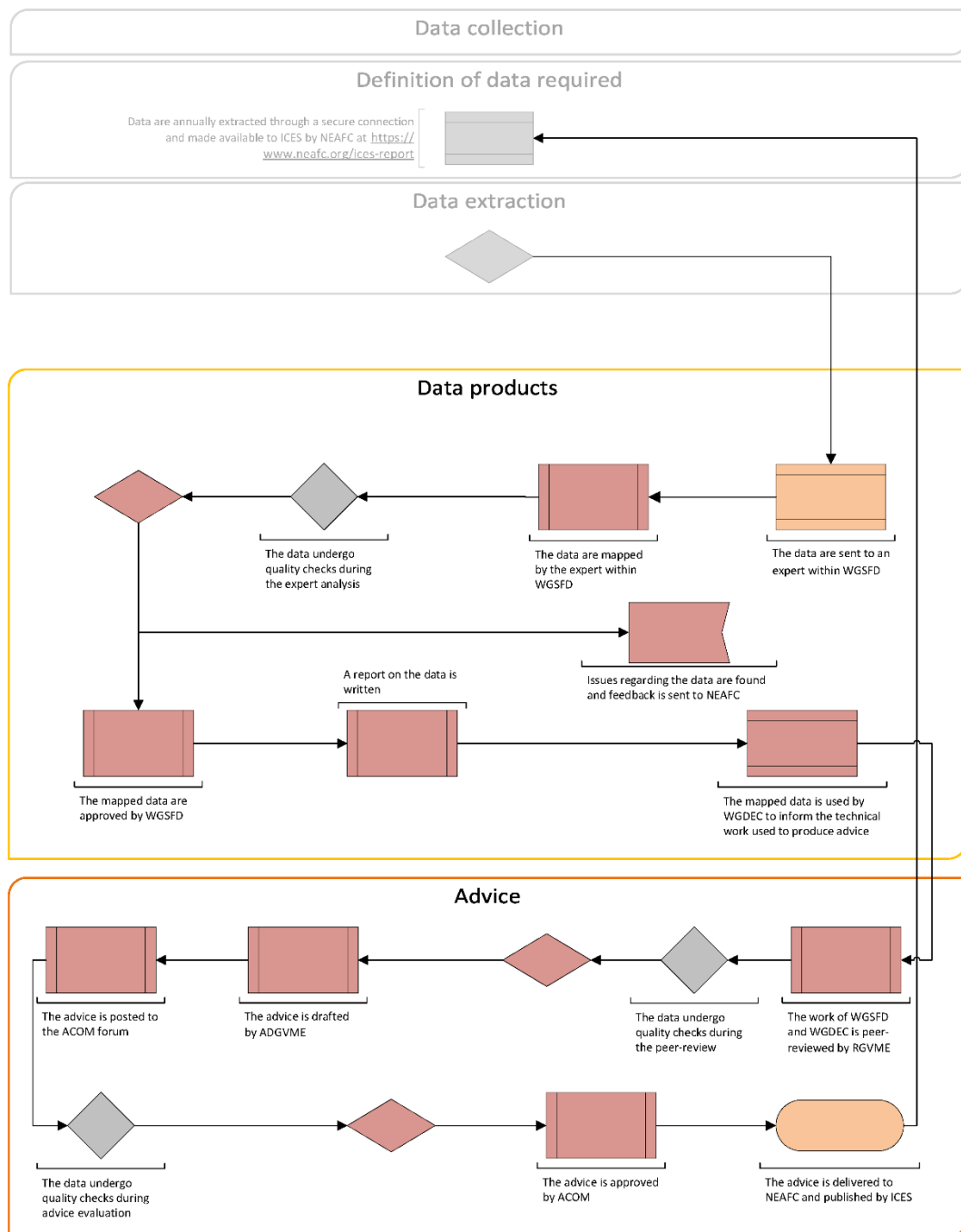
Data portal	Data flow	Purpose	Data Centre staff	Data customers
None	Vessel Monitoring System (VMS) - NEAFC data call	Support assessment and ICES advice products (e.g VME advice)	Carlos Pinto; Joana Ribeiro	Working Group on Deep-water Ecology (WGDEC); North East Atlantic Fisheries Commission (NEAFC); European Commission (EC)

Linked Data flow(s)	Linkage Direction (Linked dataflow <b>Requires</b> this dataflow, or linked dataflow is <b>Required</b> by this dataflow)
Vulnerable Marine Ecosystems data	Requires (this dataflow)

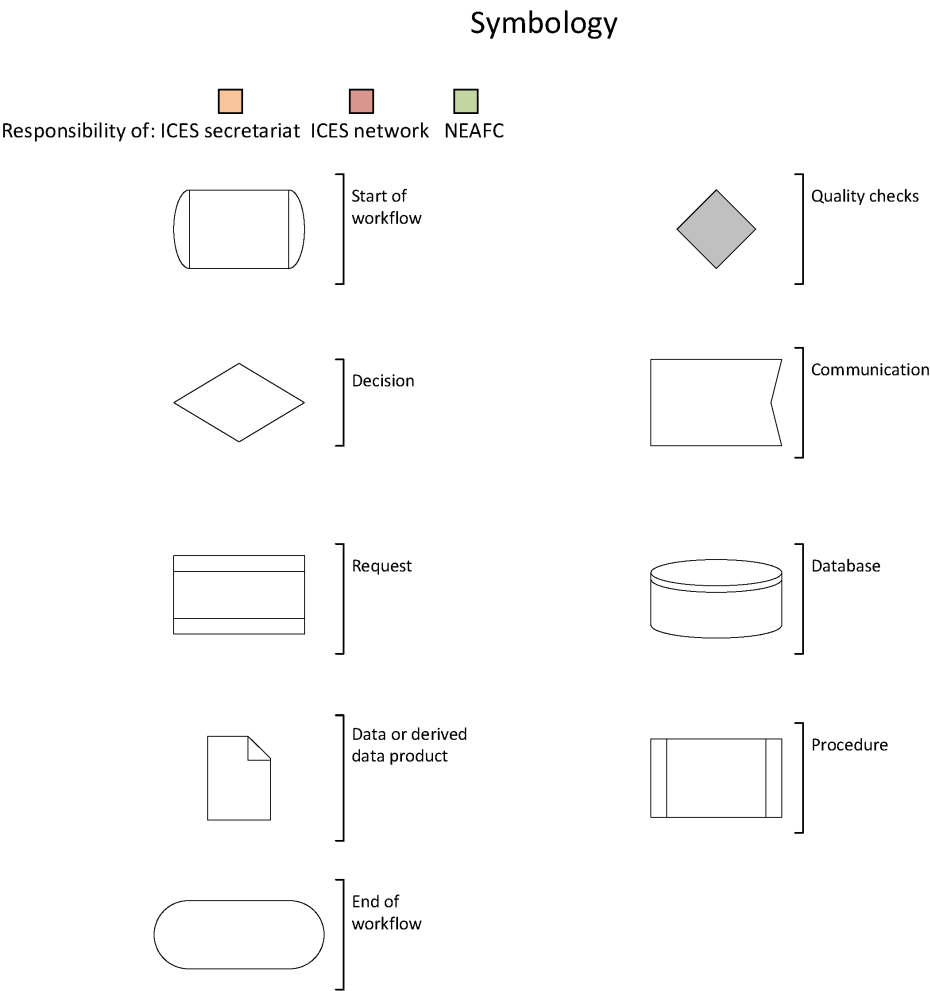
## 2 Data flow schematic

Figure 1 Schematic and explanation of symbols (superscript numbers in diagram refer to URL's provided in the references section)





### 3    **Symbology**





## 4 Version History

Date	Change	Prepared by
June 2020	Initial version created	Joana Ribeiro, ICES and Neil Holdsworth, ICES

## 5 References

ICES. 2019. Advisory Plan. <http://doi.org/10.17895/ices.pub.5468>

ICES. 2019. Agreement on VMS and Catch Data. [http://ices.dk/about-ICES/Documents/Cooperation%20agreements/NEAFC/20190201-NEAFC-ICES-agreement-VMS-Logbook\\_2019.pdf](http://ices.dk/about-ICES/Documents/Cooperation%20agreements/NEAFC/20190201-NEAFC-ICES-agreement-VMS-Logbook_2019.pdf)

*Cited as superscript numbers in dataflow schematic:*

- (1) NEAFC. 2020. Data Exchange Format and Data Communication Systems <https://www.neafc.org/scheme/Annex9>
- (2) ICES. 2019. Memorandum of Understanding between NEAFC and ICES. [http://ices.dk/explore-us/Documents/Cooperation%20agreements/NEAFC/20191113\\_MoU\\_ICES\\_NEAFC\\_signed.pdf](http://ices.dk/explore-us/Documents/Cooperation%20agreements/NEAFC/20191113_MoU_ICES_NEAFC_signed.pdf)
- (3) ICES. 2019. Agreement on VMS and catch data. [http://ices.dk/explore-us/Documents/Cooperation%20agreements/NEAFC/20190201-NEAFC-ICES-agreement-VMS-Logbook\\_2019.pdf](http://ices.dk/explore-us/Documents/Cooperation%20agreements/NEAFC/20190201-NEAFC-ICES-agreement-VMS-Logbook_2019.pdf)
- (4) URL not public

## Author contact information

**Joana Ribeiro, [joana.ribeiro@ices.dk](mailto:joana.ribeiro@ices.dk)**

International Council for the Exploration of the Sea.

H. C. Andersens Boulevard 44-46, DK 1553 Copenhagen V, Denmark ·

Tel: +45 3338 6700 · Fax: +45 3393 4215

**Neil Holdsworth, [neilh@ices.dk](mailto:neilh@ices.dk)**

International Council for the Exploration of the Sea.

H. C. Andersens Boulevard 44-46, DK 1553 Copenhagen V, Denmark ·

Tel: +45 3338 6700 · Fax: +45 3393 4215