

Outdated
See ICES library for latest version



USER MANUAL

April 2020

Version 4



Technical
University of
Denmark



Outdated

See ICES library for latest version

International Council for the Exploration of the Sea Conseil International pour l'Exploration de la Mer

H. C. Andersens Boulevard 44–46
DK-1553 Copenhagen V
Denmark
Telephone (+45) 33 38 67 00
Telefax (+45) 33 93 42 15
www.ices.dk
info@ices.dk

Recommended format for purposes of citation:

ICES. 2020. SmartDots User manual. 19pp. <http://doi.org/10.17895/ices.pub.6000>

The material in this report may be reused using the recommended citation. ICES may only grant usage rights of information, data, images, graphs, etc. of which it has ownership. For other third-party material cited in this report, you must contact the original copyright holder for permission. For citation of datasets or use of data to be included in other databases, please refer to the latest ICES data policy on the ICES website. All extracts must be acknowledged. For other reproduction requests please contact the General Secretary.

This document is the product of an Expert Group under the auspices of the International Council for the Exploration of the Sea and does not necessarily represent the view of the Council.

See ICES library for latest version

Contents

1	Login.....	3
2	Event screen	4
3	Age reading.....	5
3.1	Title	5
3.2	Files.....	5
3.3	Annotations	6
3.4	Sample	10
3.5	Graphs	10
3.5.1	Brightness	10
3.5.2	Redness	11
3.5.3	Growth.....	11
3.6	Editor.....	12
3.7	Toolbar	15
4	Video tutorials.....	17
5	Contacts	18
6	Change log.....	19

Outdated

See ICES library for latest version

1 Login

You need to connect to the ICES Web API using the Token authentication. A token can be obtained here <http://ices.dk/marine-data/tools/Pages/smartdots>. The token provided should be copied and pasted into the login screen shown in the image below. Press connect to continue.

In case users don't have an ICES login they can request a guest token. With a guest token the users can only view published events. To create a guest token, the user should click on the "Get guest token" button.

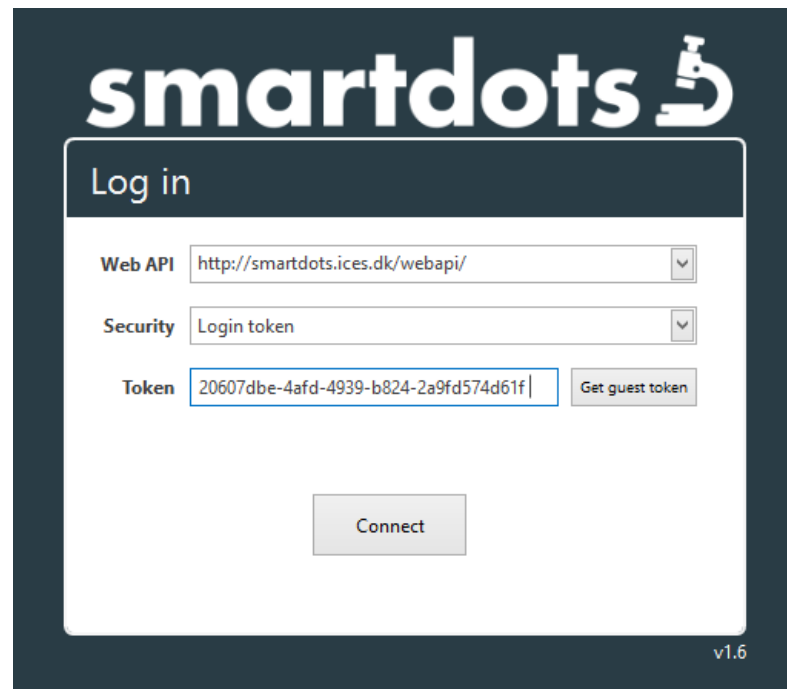
The image shows the SmartDots login interface. At the top, the 'smartdots' logo is displayed in white on a dark blue background, accompanied by a microscope icon. Below the logo is a white box with a dark blue header labeled 'Log in'. Inside this box, there are three input fields: 'Web API' with the value 'http://smartdots.ices.dk/webapi/', 'Security' with the value 'Login token', and 'Token' with the value '20607dbe-4afd-4939-b824-2a9fd574d61f'. To the right of the 'Token' field is a button labeled 'Get guest token'. At the bottom center of the white box is a 'Connect' button. The version number 'v1.6' is visible in the bottom right corner of the dark blue background.

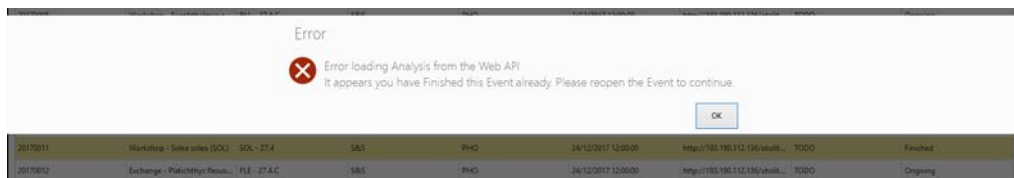
Figure 1. SmartDots login screen.

2 Event screen

smartdots		Event overview													
Purpose	Event ID	Name Of Event	Species	Start Date	End Date	Organizer Email	Institute	Event Type	Year	Closed	User Progress	Role	Progress		
Age reading	251	cod2019_3	Gadus morhua	02/06/2019	31/10/2019	Uwe.krumm@dt...		Exchange	2019	Event is closed	Ongoing	Country coordin...	380 samples / 0...		
Age reading	250	Herring_2019_BI...	Clupea harengus	01/06/2019	31/12/2019	annette.hj.vanste...		Exchange	2019	Event is closed	Ongoing	Organizer	100 samples / 0...		
Age reading	235	2019_Haddock_2...	Melanogrammus	01/06/2019	30/06/2020	jane.godisen@dt...		Exchange	2019	Event is open	Ongoing	Country coordin...	373 samples / 0...		
Age reading	225	SILDONG/VIK...	Anguilla anguilla	15/05/2019	15/07/2019	idomingo@fc.ia...		Exchange	2019	Event is open	Ongoing	Country coordin...	59 samples / 0 a...		
Age reading	224	MT training	Melanogrammus	07/05/2019	26/11/2019	xxxxxxxxxxxxxxxx...		Training	2019	Event is public	Ongoing		95 samples / 0 a...		
Age reading	221	Plaice 2019 TRG	Pleuronectes pla...	05/04/2019	26/06/2019	Karen.Belbert@dt...		Exchange	2019	Event is open	Ongoing	Country coordin...	166 samples / 0...		
Age reading	219	2019 North Sea S...	Ammodytes	02/04/2019	20/09/2019	xxxxx@aquadhu...		Exchange	2019	Event is public	Ongoing		120 samples / 0...		
Age reading	201	cod benchmark...	Gadus morhua	06/01/2019	04/02/2019	Uwe.krumm@dt...		Exchange	2019	Event is closed	Ongoing	Country coordin...	49 samples / 0 a...		
Age reading	200	hail 2019 70-48 4C	Scophthalmus l...	13/01/2019	30/04/2019	xxxxxxxxxxxxxx@...		Exchange	2019	Event is public	Ongoing		240 samples / 0...		
Age reading	199	2019 North Sea a...	Sparus smittii	05/12/2018	05/12/2019	joc@aquadhu.dk		Training	2018	Event is closed	Ongoing	Country coordin...	184 samples / 0...		
Age reading	193	2018 North Sea...	Trisopterus esm...	11/01/2018	16/03/2018	xxxxxxxxxx@ices.dk		Training	2018	Event is public	Ongoing		96 samples / 0 a...		
Age reading	192	2018 North Sea...	Trisopterus esm...	10/01/2018	16/03/2018	xxxxxxxxxx@ices.dk		Training	2018	Event is public	Ongoing		116 samples / 0...		
Age reading	159	Age Calibration...	Pleuronectes pla...	01/04/2019	08/08/2019			Exchange	2019	Event is public	Ongoing		255 samples / 0...		
Age reading	144	WIKARMAC2 cal...	Scomber scomb...	21/10/2018	31/10/2018	xxxxxxxxxxxxxxxx...		Workshop	2018	Event is public	Ongoing		143 samples / 0...		
Age reading	112	cod validation	Gadus morhua	05/06/2018	30/03/2019	francesca.vitale...		Exchange	2018	Event is closed	Ongoing	Country coordin...	102 samples / 0...		
Age reading	102	PRE-WIKARMAC...	Scomber scomb...	03/10/2018	17/10/2018	xxxxxxxxxxxxxxxx...		Workshop	2018	Event is public	Ongoing		135 samples / 0...		
Age reading	81	Anchovy Exchan...	Engraulis encras...	01/05/2018	04/09/2018	xxxxxxxxxxxxxxxx...		Exchange	2018	Event is public	Ongoing		160 samples / 0...		

There is a search field at the top of the screen. Entering text will filter the list below and will work for all fields.

There is a “Finish/Reopen”-button in the event overview screen. Clicking on the button set the status of an event for the logged in user to “open” or “finished”. The user can only perform age-readings for his open events.



A '?' is found in the title bar which opens the web browser to the user manual
<http://ices.dk/publications/library/Pages/default.aspx#k=smartdots%20handbook>

Outdated

See ICES library for latest version

3 Age reading

The age reading screen contains all the age-reading information. This screen consists of multiple components numbered 1-7 in Figure 3.

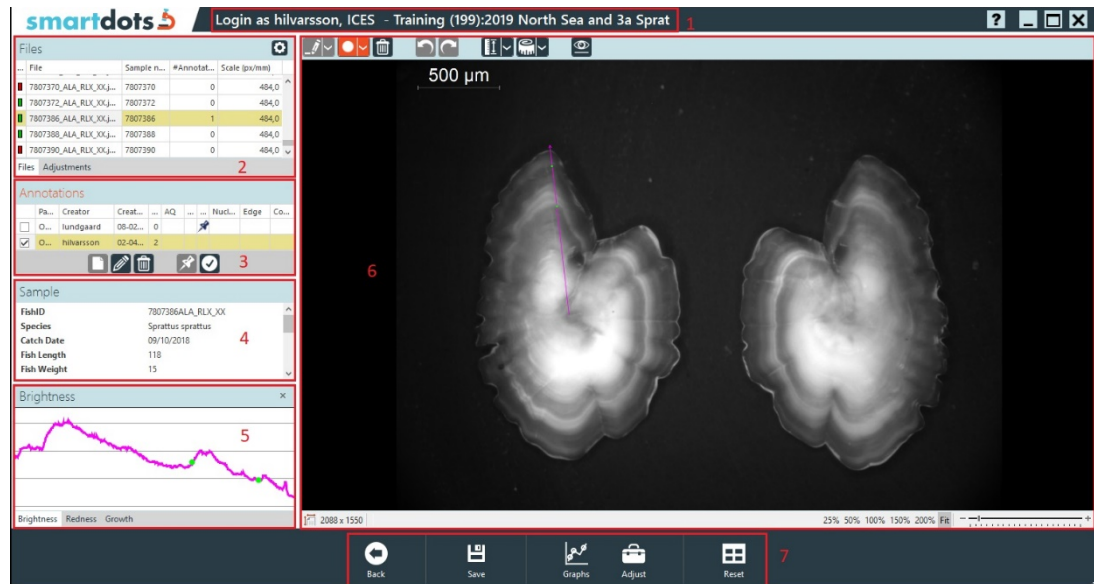


Figure 3. Age reading screen.

3.1 Title

Shows information about the logged in user and the current workshop/exchange he/she is working on.

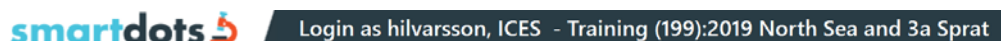


Figure 4. Title bar

3.2 Files

Contains information about all loaded image files. All columns can be sorted by clicking in the header row. When closing SmartDots and opening it again, the sorting changes back to default, which is sorting by file name.

By right-clicking in the header row and selecting the option "Show search panel", a search input box will be shown and can be used to filter the file list.

The first column indicates the file's status. Hovering over this shows more information. *Red – no annotation; Orange – annotation not approved; Green – approved annotation.* The file name is the physical file name the image has. The sample number is the link between the image and the sample (= fish) the otolith originates from. The #Annotations

See ICES library for latest version

is the number of readings the user can see. The scale is the amount of pixels that represent the length of the scale bar converted to 1 millimeter when the image is zoomed 100%.

It is possible to navigate through files with next and previous buttons. It is optional and can be turned on by clicking on the cog symbol in the upper right corner. A popup will appear with the option to turn this feature on or off. Your choice will be saved and remembered for the next time you use SmartDots.







Files 				
@	File	Sample numb...	#Annotations	Scale (px/mm)
	7807370_ALA_RLX_XX.jpg	7807370	0	484,0
	7807372_ALA_RLX_XX.jpg	7807372	0	484,0
	7807386_ALA_RLX_XX.jpg	7807386	1	484,0
	7807388_ALA_RLX_XX.jpg	7807388	0	484,0
	7807390_ALA_RLX_XX.jpg	7807390	0	484,0
Files Adjustments				

Figure 5. Files information.

3.3 Annotations







Annotations										
	Parameter	Creator	Created	Age	AQ	Approved	Fixed reading line	Nucleus	Edge	Comment
<input type="checkbox"/>	OWR	lundg...	08-02-19	0						
    										

Figure 6. Annotations information.

Shows information about the age readings for the selected file.

Parameter describes what type of annotations are made. This can be winter rings, summer rings, day rings etc.

Creator is the reader. This property and the creation date are automatically set.

The AQ indicates the quality of the age reading. An AQ score must be provided for each age.

- AQ1: Easy to age with high precision.
- AQ2: Difficult to age with acceptable precision.

Outdated

See ICES library for latest version

- AQ3: Rings cannot be counted, the calcified structure is considered unreadable (no age assigned).
- AQ3_QA: Rings cannot be counted, the calcified structure is considered unreadable. Age is assigned for Quality Assurance purposes only.

Annotations

	Parameter	Creator	Created	Age	AQ	Approved	Fixed reading line	Nucleus	Edge	Comment	
<input type="checkbox"/>	OWR	lundg...	08-02-19	0							
<input checked="" type="checkbox"/>	OWR	hilvars...	12-10-19	0	<input type="button" value="v"/>						
					Code						
					AQ1						
					AQ2						
					AQ3						
					AQ3_QA						
Sample											

Figure 7. AQ scores.

When “AQ3” is selected, all dots will be erased from the annotation (if there are any) and the Age field will become empty. The software will now display a warning when the user tries to assign AQ3. The user has to confirm the message.

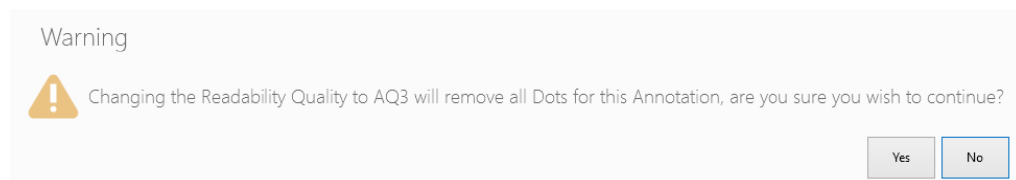


Figure 8. AQ3 warning.

Approved means the user has approved the reading so that it can be included in reporting.

The fixed reading line indicates that the line for this age reading will be used for everyone who creates an age reading. Only administrators can create fixed reading lines.

It is also possible for the organizer to add two extra columns (Nucleus and Edge) when needed. You can manage the Edge and Nucleus properties directly in the grid. The available options for both properties are: Opaque, Translucent, NA (not applicable) (Figure 9). The software will translate NA to null (nothing). The Edge and Nucleus fields are also integrated in the popup window to edit/save the annotation (Figure 10).

See ICES library for latest version

Annotations										
	Parameter	Creator	Created	Age	AQ	Approved	Fixed reading line	Nucleus	Edge	Comment ▲
<input type="checkbox"/>	OWR	lundg...	08-02-19	0						
<input checked="" type="checkbox"/>	OWR	hilvars...	12-10-19	0				<input type="button" value="v"/>		
								Code		
								Opaque		
								Translucent		
								NA		

Figure 9. Nucleus and edge columns.

EDIT ANNOTATION - user6 - 14/05/2019 10:36:31

PARAM	<input type="text"/>
AQ-code	<input type="text"/>
Approved	<input type="checkbox"/>
Edge	<input type="text" value="NA"/>
Nucleus	<input type="text" value="NA"/>
Comment	<input type="text"/>

Figure 10. Edit/save annotation popup window.

The comment is optional but can be used by the user to add remarks. If you want to add a comment about a specific annotation, hover over the annotation and at the bottom of the editor panel you will see which age it corresponds to (Figure 11) and add this to the comment.

Outdated

See ICES library for latest version

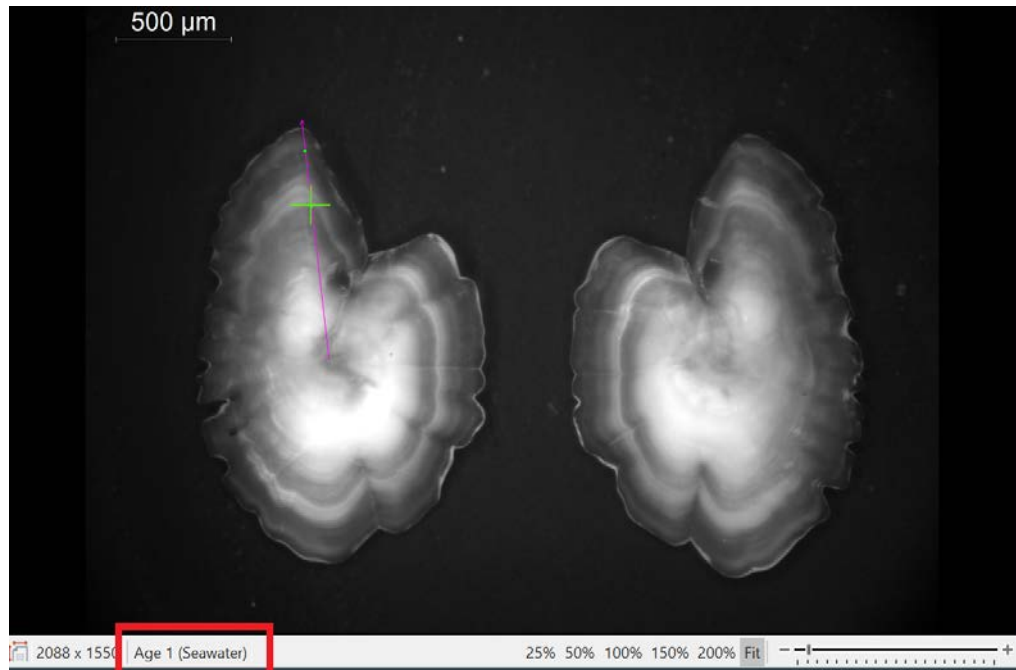


Figure 11. Editor panel with annotation and corresponding age.

There are several buttons at the bottom of the annotation component.



From left to right:

- Create: Creates a new record for age reading. The user can now start making annotations.
- Edit: A popup shows up with the properties that the user can change. Here you can also add comments.
- Delete: delete the reading.
- Pin: This is only for administrators. It creates the fixed reading line. All users will have to annotate on this line.
- Approve/Disapprove: Toggles the approval of the reading.

When the buttons are disabled, hovering over them with the cursor will display the reason.

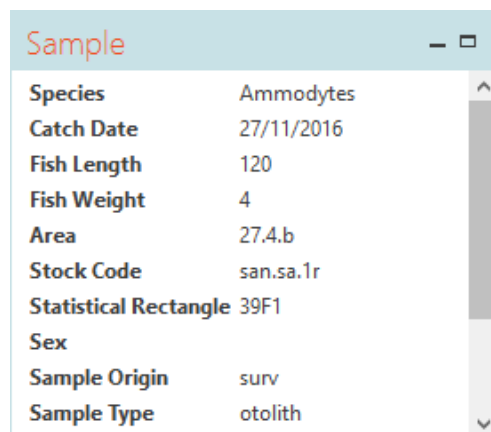
Do not annotate the centre of the otolith or the outermost edge of the otolith. Only place a dot at the end of each winter ring as these are counted when estimating the age. SmartDots will automatically give the age of the fish based on the number of annotations that you make.

The final annotation must be approved for each otolith that is to be included in the reporting. This is done in the popup window to edit /save annotations (Figure 10) or by clicking on the approve button in the annotation tool bar.

Outdated

See ICES library for latest version

3.4 Sample

A screenshot of a software window titled "Sample". It contains a list of attributes and their values. The attributes are: Species (Ammodytes), Catch Date (27/11/2016), Fish Length (120), Fish Weight (4), Area (27.4.b), Stock Code (san.sa.1r), Statistical Rectangle (39F1), Sex, Sample Origin (surv), and Sample Type (otolith). The window has a light blue header and a vertical scrollbar on the right.

Species	Ammodytes
Catch Date	27/11/2016
Fish Length	120
Fish Weight	4
Area	27.4.b
Stock Code	san.sa.1r
Statistical Rectangle	39F1
Sex	
Sample Origin	surv
Sample Type	otolith

Figure 12. Sample information.

This window shows all information about the sample fish linked with the image. This section is read-only.

3.5 Graphs

Graphs show information about the selected age reading's line and annotations. There are currently three graphs in SmartDots. Graphs will use the same line and dot colors as the annotation it displays. Dots' sizes will also be displayed in the graphs. The Graphs' background may change to black in order to have a high contrast with the line colour.

3.5.1 Brightness

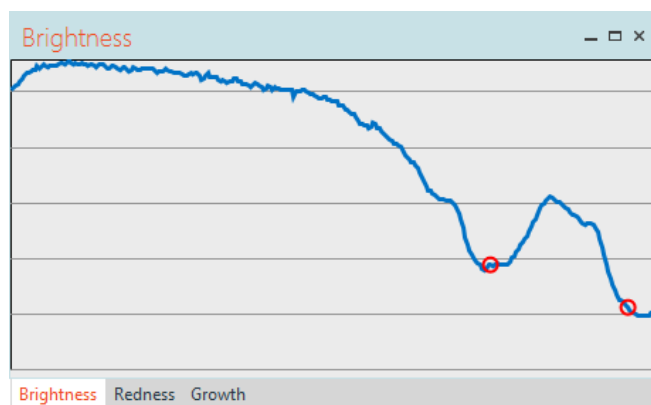


Figure 13. Brightness graph.

Displays the brightness of the image under the line from start to end. This can be used to detect rings. The graph will display the location of the cursor if hovered near the line. When Dot-mode is active, the user can click the graph on a specific location to add the dot.

Outdated

See ICES library for latest version

HINT: It is possible to zoom in in this graph as well as in the Redness graph. Zooming allows for better accuracy. To zoom in, hold the shift button while selecting (click, hold and drag the left mouse button) the area in the graph you want to see more detailed.

3.5.2 Redness

Redness operates in the same way as brightness but displays the red value as opposed to the brightness of pixels. This is only used for otoliths that are imbedded in a red colouring agent.

3.5.3 Growth

Growth shows the distance between dots.

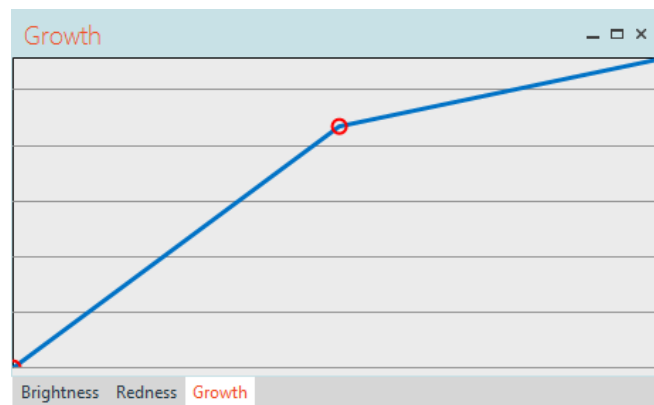
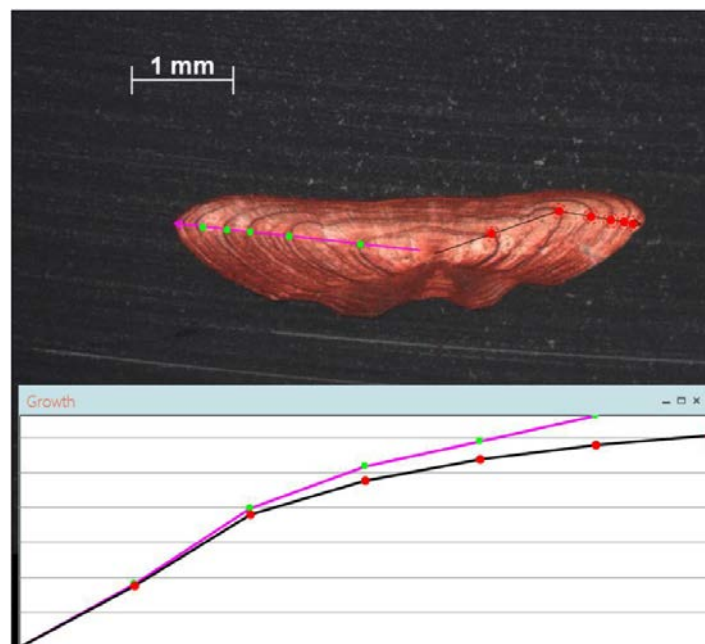


Figure 14. Growth graph.

In addition to the growth curve, all graphs can now display multiple lines. However, when displaying multiple lines, they lose their interactivity.



3.6 Editor

This is where users can draw lines and dots on the otolith image.

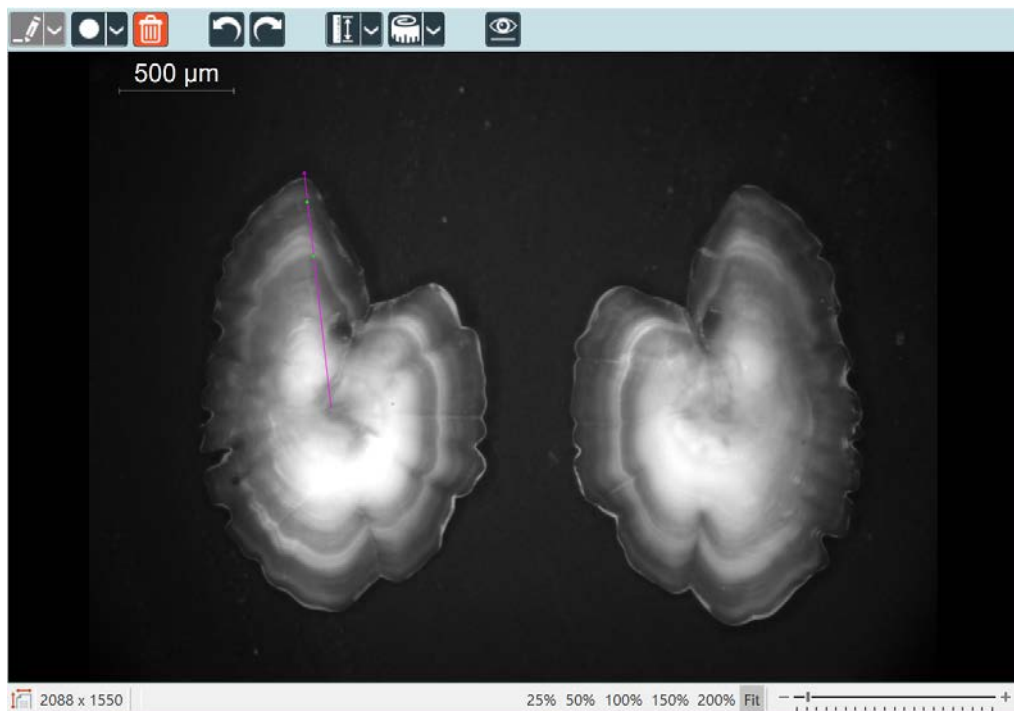


Figure 15. Editor screen with otolith image, drawing modes (top bar), and scaling options (bottom bar).

At the top, there are three modes :



- line-mode to draw lines.

When the line tool is selected the user can draw a line by clicking in the image. A line can contain multiple segments, every click adds a new segment. To end the line the user should right-click.

- dot-mode to draw dots

When the dot tool is selected the user can place dots on the line. Every click adds a new dot.

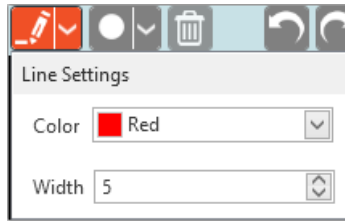
- delete-mode to delete lines and/or dots

All buttons with an arrow next to them have additional options.

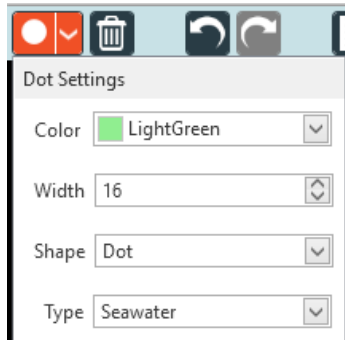
Additional line properties

Outdated

See ICES library for latest version



Addition dot properties



There are also buttons for undo/redo.



There is a button used to measure the scale shown on the image. The scale can be measured automatically by selecting the 'automatic' option. If you select 'manual' you can set the scale size manually. Therefore you have to click on the starting point and click again on the end point of the scale. You can confirm by clicking on the accept button.

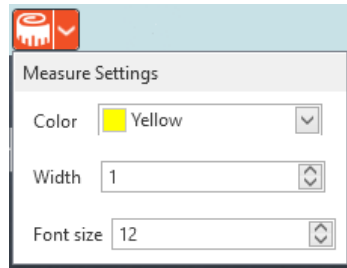


With this button the user can measure distances on the otolith image.



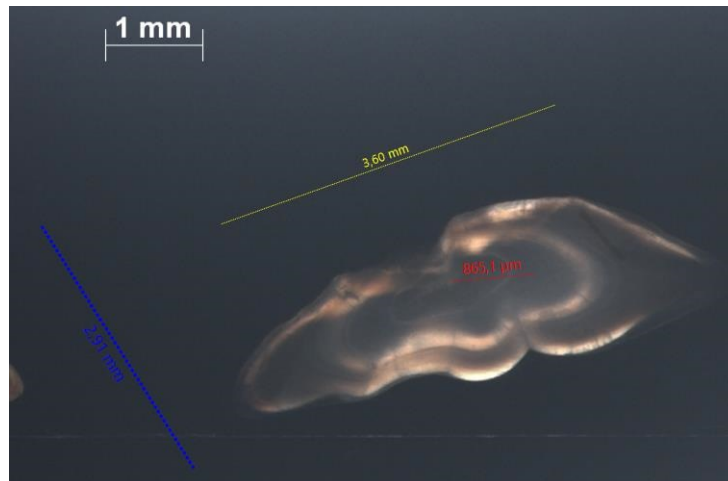
Measurements will appear as a dashed colored line with text above or below it. The line width and font size are as displayed when the image is viewed on 100% size. The user can modify the measure settings.

See ICES library for latest version



To start measuring click on the Icon (left hand side) and draw a line on the image as you would make an annotation line. As you are drawing the line, the length of it is displayed along with it in pixels (if the scale is not known) or in metric lengths (if the scale is known). To end a measurement the user should (left-)click another time.

Measuring's can only contain one line segment. You can draw as many measuring lines as wished. The measuring line settings will be remembered between sessions, *however measuring lines are temporary and are thus not saved.*



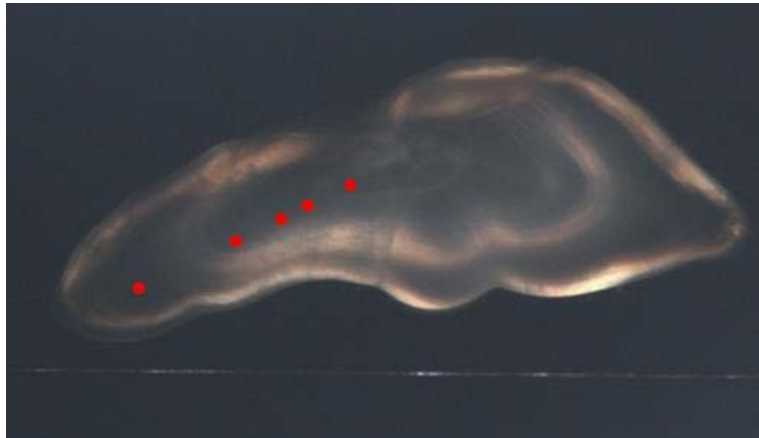
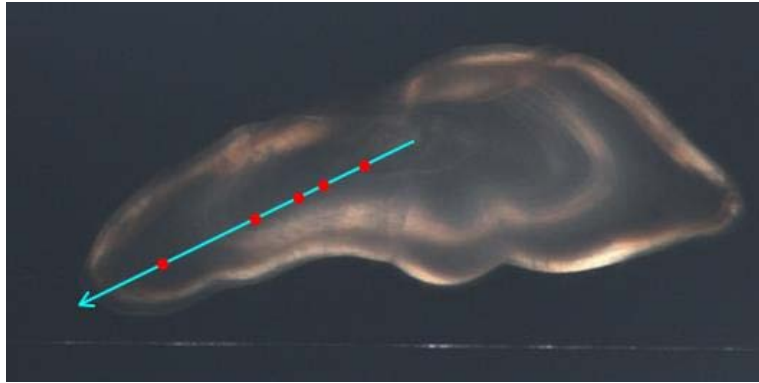
The last button in the age-reading window is a toggle button.



Clicking on this button toggles the line visibility.

Outdated

See ICES library for latest version



When the line is invisible, dots can still be added. The button also toggles on-screen measuring's.

The information bar and zoom options are shown at the bottom of the window (Figure 14). You can select a preset zoom value by clicking on the desired zoom factor. You can also zoom in or out by clicking on the '-' or '+' sign or by clicking in the slider.

3.7 Toolbar

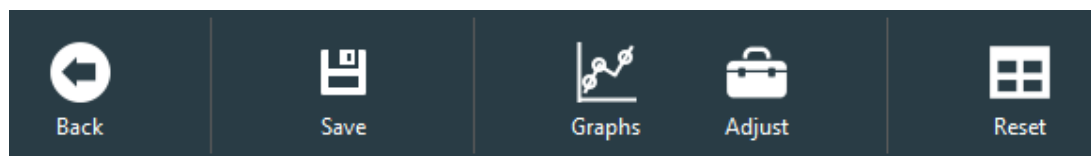


Figure 76. Toolbar buttons.

These buttons contain logic not specifically related to an age reading but can be helpful for the user.

- Back: return to the previous screen.

See ICES library for latest version

- **Save:** save current progress. By selecting a new file all data related to the previous file will be saved automatically.
- **Graphs:** show/hide the graphs.
- **Adjust:** show/hide the adjustments. Adjustments can be found as a tab under Files. It allows the user to temporarily adjust the brightness/contrast of the image (Figure 16).
- **Reset:** resets all layout.

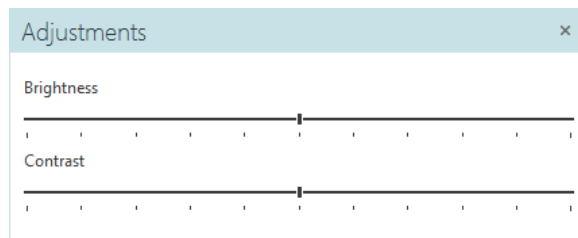


Figure 17. Adjustments panel.

Outdated

See ICES library for latest version

4 Video tutorials

Video tutorials are now available on YouTube.

<https://www.youtube.com/channel/UCa4bjXo-eBDfW0cm1oEIWeQ/playlists>

5 Contacts

The following people can be contacted about SmartDots:

- Carlos Pinto, ICES Data Centre: carlos@ices.dk
- Julie Coad Davies, DTU Aqua: joco@aqua.dtu.dk
- Kevin De Coster, ILVO: Kevin.DeCoster@ilvo.vlaanderen.be
- [Joana Ribeiro, ICES Data Centre: joana.ribeiro@ices.dk](mailto:joana.ribeiro@ices.dk)

Outdated

See ICES library for latest version

6 Change log

Date	Change	Prepared by
8 November 2018	Initial version created	Carlos Pinto, ICES; Kevin De Coster, ILVO; Julie Krogh Hallin, ICES
12 October 2019	Updated after release of version 2	Annelie Hilvarsson, SLU
14 November 2019	Updated	Carlos Pinto, ICES
3 April 2020	Updated after release of new version (2.1)	Annelie Hilvarsson, SLU