

# The Database of Trawl Surveys

Volume 3: Edition 1 | July 2023

ICES DATA FLOW  
SCHEMATICS



## International Council for the Exploration of the Sea Conseil International pour l'Exploration de la Mer

H. C. Andersens Boulevard 44–46  
DK-1553 Copenhagen V  
Denmark  
Telephone (+45) 33 38 67 00  
Telefax (+45) 33 93 42 15  
[www.ices.dk](http://www.ices.dk)  
[info@ices.dk](mailto:info@ices.dk)

### Recommended format for purpose of citation:

ICES. 2023. Database of trawl surveys. ICES Data Flow Schematics Vol. 3: Ed. 1. 9 pp.  
<https://doi.org/10.17895/ices.pub.23634315>

This document has been produced under the auspices of an ICES Expert Group or Committee.  
The contents therein do not necessarily represent the view of the Council.

Cover Image: Simon Cooper for International Council for the Exploration of the Sea

© 2023 International Council for the Exploration of the Sea.

This work is licensed under the [Creative Commons Attribution 4.0 International License](https://creativecommons.org/licenses/by/4.0/) (CC BY 4.0).  
For citation of datasets or conditions for use of data to be included in other databases, please refer to [ICES data policy](#).



# Contents

Foreword .....	1
1    Meta-information on the data flow.....	2
2    Data flow schematic .....	4
Symbology .....	7
Version History .....	8
References.....	9
Author contact information .....	10

## Foreword

Delivering high quality advice is essential to ICES success. To this end, quality assurance of the entire process, from data collection to the publication of objective advice, is the first priority in the ICES Advisory plan. ICES aims to provide quality control and assurance processes in an end-to-end quality assurance framework that will encompass best practice in data management, data integration, and translation into advice. The Data Flow Schematics series focusses on one aspect of this framework, which is to have well described and standard schematics of each of the data flows coming through the ICES data management systems.

This document focusses on the data flow into the ICES data management systems for surveys at sea, primarily those with a focus on fish species caught using bottom trawling nets. Trawl-survey data hosted at ICES are collected by research institutions in ICES member countries, and other European countries outside the ICES area. These data contain information on the distribution, abundance, and population structure of target fish species. The data are used by ICES working groups to produce single and mixed species stock assessments. In some cases data from outside the ICES areas might be requested. The data are not requested under a data call, but a timetable of deadlines are agreed on and reviewed by the ICES survey groups that coordinate the surveys, in dialogue with the ICES assessment groups that make use of the data. These deadlines are related to the advisory process. Collected data are publicly accessible under the general ICES data policy, which uses the CC BY 4.0 license.



# 1 Meta-information on the data flow

Table 1.1. Basic information on the dataflow.

Data portal	Data flow	Purpose	Data centre staff	Data Customers
DATRAS	Database of trawl surveys (DATRAS)	Support assessment and ICES advice products	Adriana Villamor; Laura Andreea Petre; Vaishav Soni	<b>Data input</b> International Bottom Trawl Survey Working Group (IBTSWG), Working Group on Beam Trawl Surveys (WGBEAM), and Baltic International Fish Survey Working Group (WGBIFS) <b>Data output</b> Herring Assessment Working Group for the Area South of 62° N (HAWG), Working Group on the Assessment of Demersal Stocks in the North Sea and Skagerrak (WGNSSK), Northwestern Working Group (NWWG), Baltic Fisheries Assessment Working Group (WGBFAS), Working Group for the Celtic Seas Ecoregion (WGCSE), Working Group for the Bay of Biscay and the Iberian Waters Ecoregion (WGBIE), Arctic Fisheries Working Group (AFWG), Working Group on Widely Distributed Stocks (WGWIDE), and Working Group on Southern Horse Mackerel, Anchovy, and Sardine (WGHANSA)

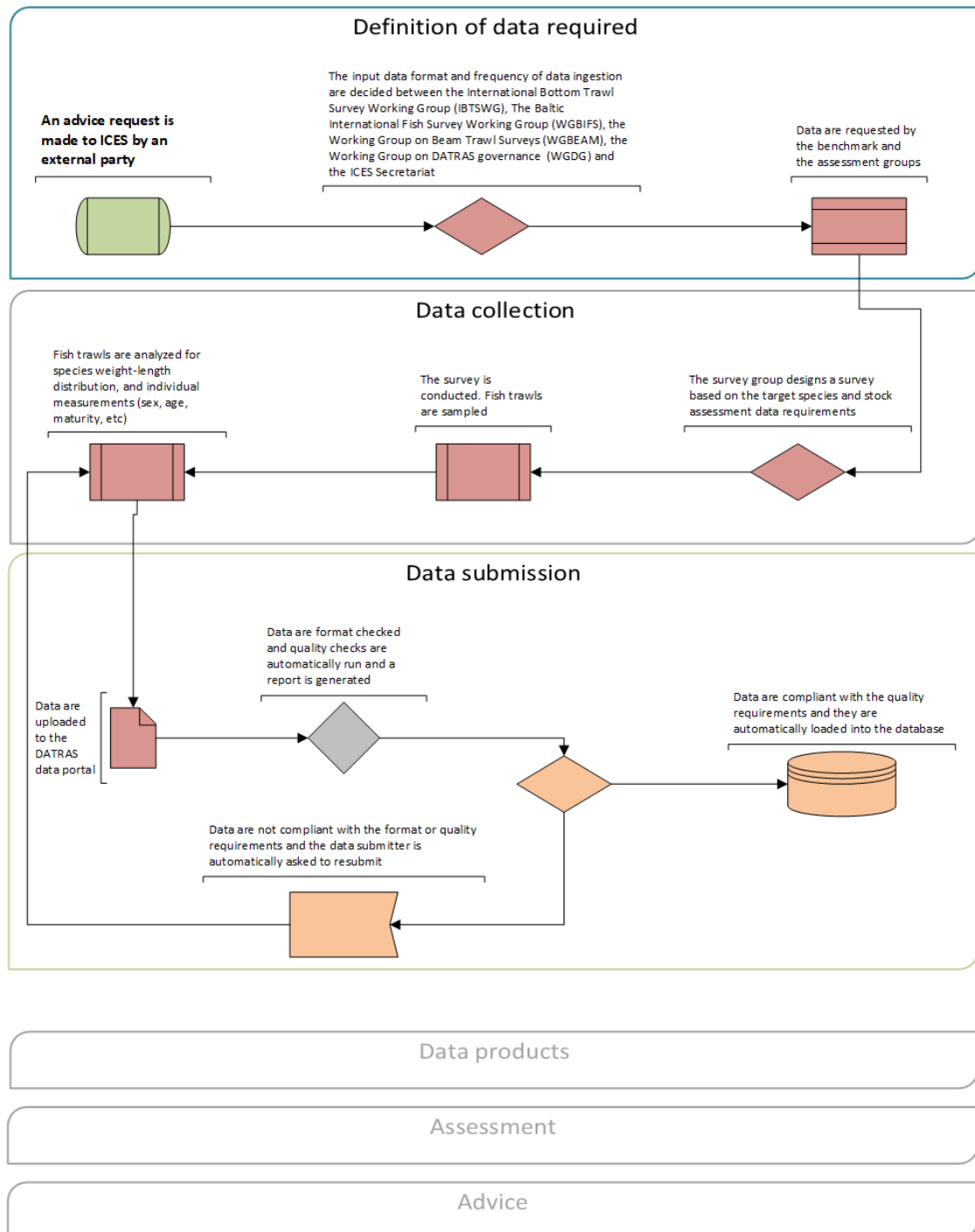
**Table 1.2. Data flow linkages**

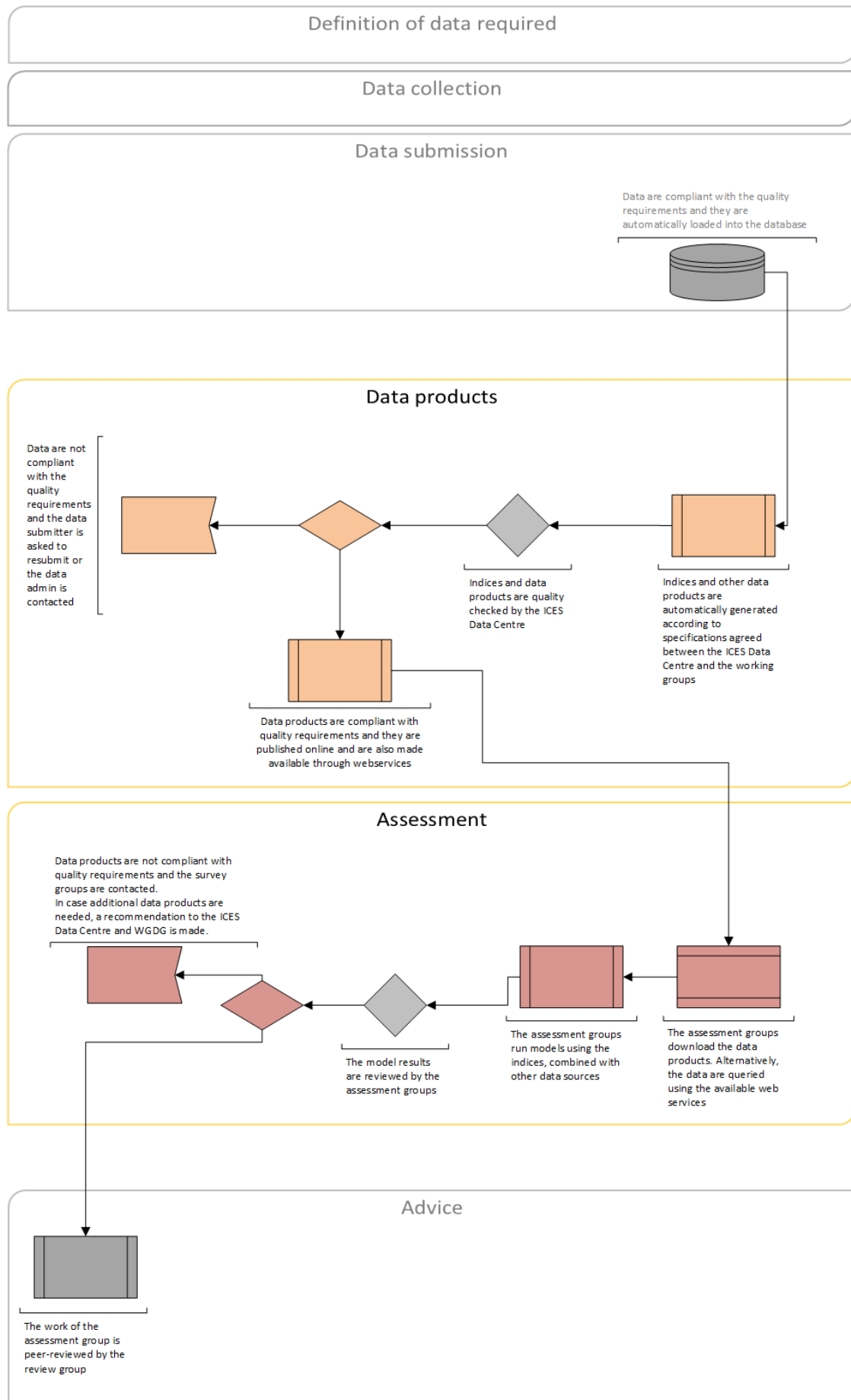
Linked data flow(s)	Linkage direction (linked dataflow requires this dataflow, or linked dataflow is required by this dataflow)
Oceanography data	Hydrographic data collected during DATRAS surveys are uploaded to the oceanography database

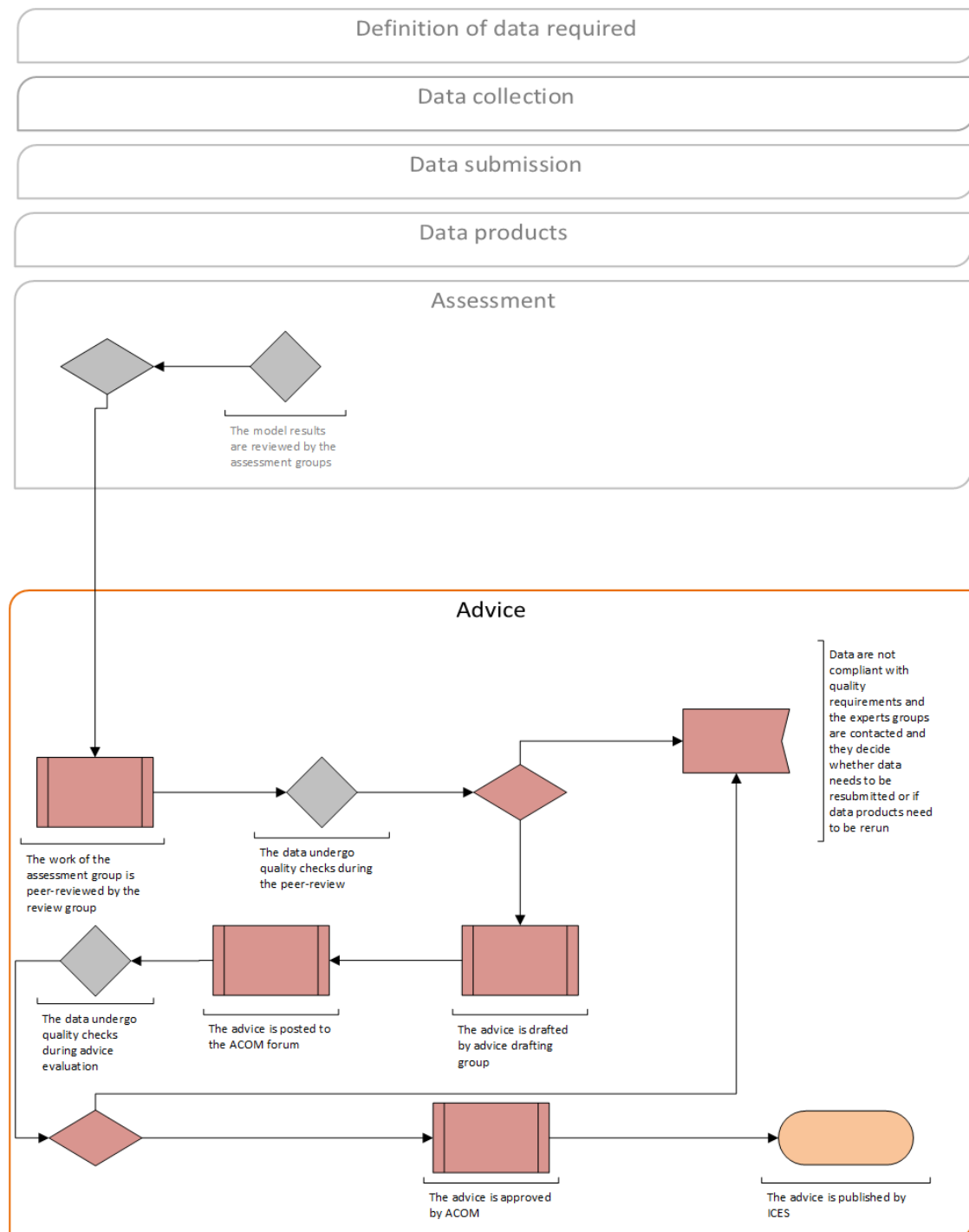
**Table 1.3. Recurring advice products using DATRAS data, and corresponding review groups. It is possible that special advice is requested, in which case a temporary review group is formed.**

Advice	Review group
Single stock advice	Stock dependent
Ecosystem Overview	Advice drafting group to finalize draft Ecosystem Overviews (ADGEO)

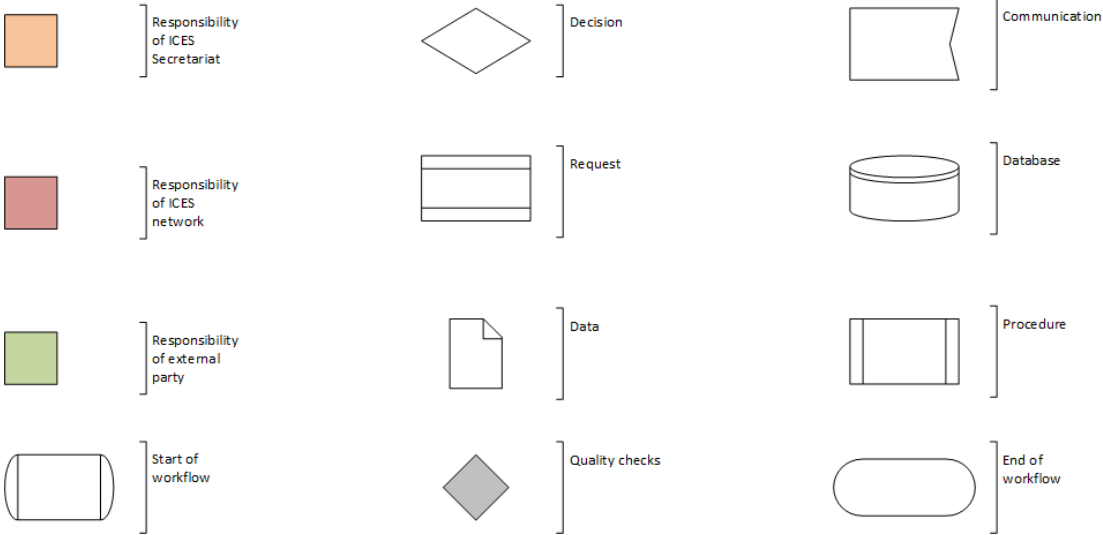
## 2 Data flow schematic







Symbology



Version History

Date	Change	Prepared by
June 2023	First version published	Joana Ribeiro, ICES

## References

ICES Database on trawl surveys (DATRAS). 2023. ICES, Copenhagen, Denmark. <https://datras.ices.dk>

ICES Oceanography database. 2023. ICES, Copenhagen, Denmark. <https://www.ices.dk/data/data-portals/Pages/ocean.aspx>

ICES Quality control checks. Dataset: Fish trawl survey. 2023. ICES, Copenhagen, Denmark. <https://www.ices.dk/data/tools/Pages/quality-control.aspx>



## **Author contact information**

Joana Ribeiro

[joana.ribeiro@ices.dk](mailto:joana.ribeiro@ices.dk)

International Council for the Exploration of the Sea

H. C. Andersens Boulevard 44-46

DK 1553 Copenhagen V

Denmark