

Acoustic trawl surveys: Processed acoustic and biotic data collected on acoustic trawl surveys in the Northeast Atlantic

Volume 4: Edition 1 | September 2023

ICES DATA FLOW
SCHEMATICS



International Council for the Exploration of the Sea Conseil International pour l'Exploration de la Mer

H. C. Andersens Boulevard 44–46
DK-1553 Copenhagen V
Denmark
Telephone (+45) 33 38 67 00
Telefax (+45) 33 93 42 15
www.ices.dk
info@ices.dk

Recommended format for purpose of citation:

ICES. 2023. Acoustic Trawl Surveys: Processed Acoustic and Biotic data collected on acoustic trawl surveys in the Northeast Atlantic. ICES Data Flow Schematics Vol. 4: Ed. 1. 9 pp. 10.17895/ices.pub.23904465

This document has been produced under the auspices of an ICES Expert Group or Committee. The contents therein do not necessarily represent the view of the Council.

Cover Image: Simon Cooper for International Council for the Exploration of the Sea

© 2023 International Council for the Exploration of the Sea.

This work is licensed under the [Creative Commons Attribution 4.0 International License](https://creativecommons.org/licenses/by/4.0/) (CC BY 4.0). For citation of datasets or conditions for use of data to be included in other databases, please refer to [ICES data policy](#).



Contents

Foreword 1

1 Meta-information on this data flow 2

2 Data flow schematic 3

Symbology 6

Version History 7

References..... 8

Author contact information 9

Foreword

Delivering high quality advice is essential to ICES success. To this end, quality assurance of the entire process from data collection to the publication of objective advice is the first priority in the ICES Advisory plan. ICES aims to provide quality control and assurance processes in an end-to-end quality assurance framework that will encompass best practice in data management, data integration, and translation into advice. This series focusses on one aspect of this framework, which is to have well described and standard schematics of each of the data flows coming through the ICES data management systems.

This document focusses on the data flow into the ICES Acoustic Trawl data portal and database which host processed acoustic and biotic data collected on acoustic trawl surveys in the Northeast Atlantic and Baltic sea. The data hosted at ICES are primarily collected by research institutions within ICES member countries. Data submission deadlines for the individual surveys are related to the advice process and set by the ICES survey coordination groups in dialogue with the ICES assessment and benchmark groups who are the main users of these data. There is no dedicated data call for the submission of these data..

Data are provided under the general ICES data policy, specific access conditions are covered by the open license CC BY 4.0 (Creative Commons, International Attribution).

1 Meta-information on this data flow

Table 1.1. Dataflow basic information

Data portal	Data flow	Purpose	Data centre staff	Customers
Acoustic	Acoustic Trawl Surveys	Support assessment and ICES advice products	Adriana Villamor; Hjalt Parner; Ihtsham Ul Haq Minhas	Herring Assessment Working Group for the Area South of 62° N (HAWG) Working Group on Southern Horse Mackerel, Anchovy, and Sardine (WGHANSA) Working Group on Widely Distributed Stocks (WGWIDE)

Table 1.2. Data flow linkages

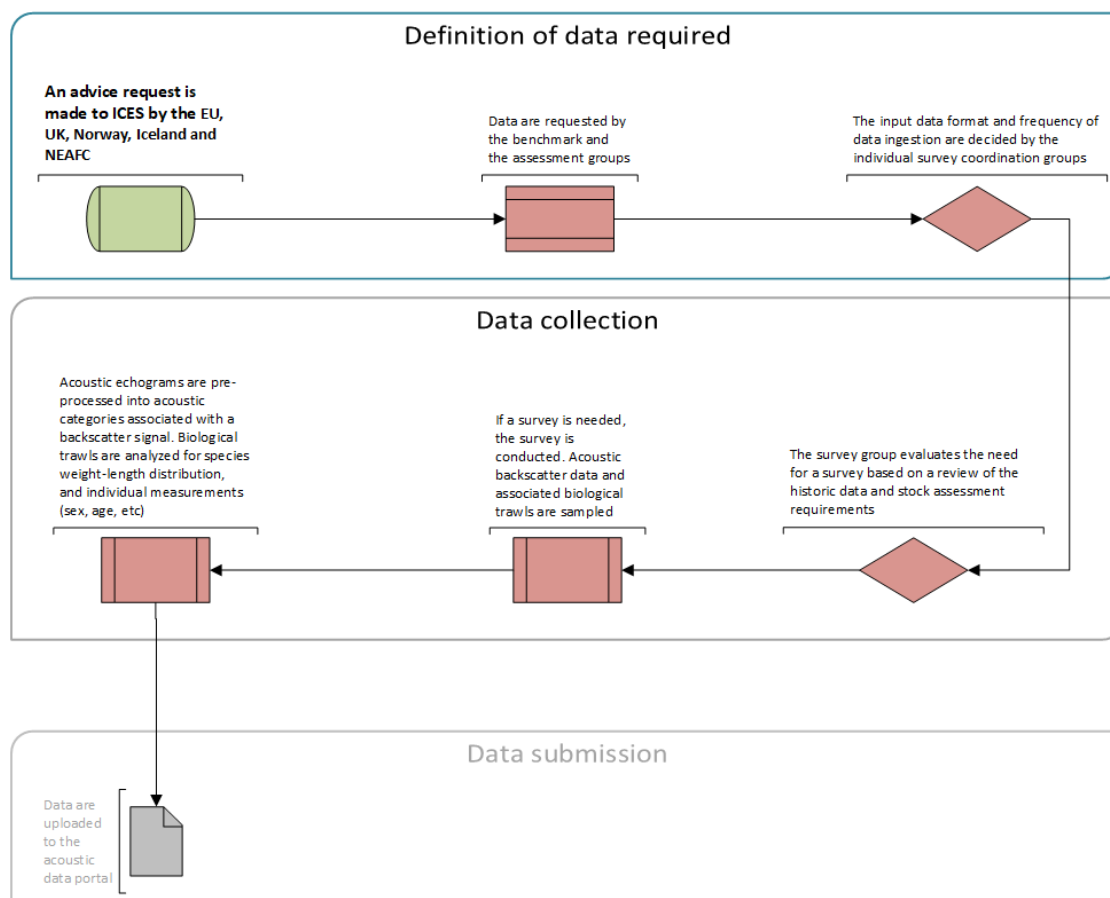
Linked data flow(s)	Linkage direction (linked dataflow requires this dataflow, or linked dataflow is required by this dataflow)
Oceanography	Conductivity, temperature, and depth (CTD) data collected in acoustic surveys is reported to the ICES Oceanography database
WGNAPES database	Zooplankton data collected in acoustic surveys in the Nordic countries is reported to the WGNAPES ¹ database , which is kept externally to ICES

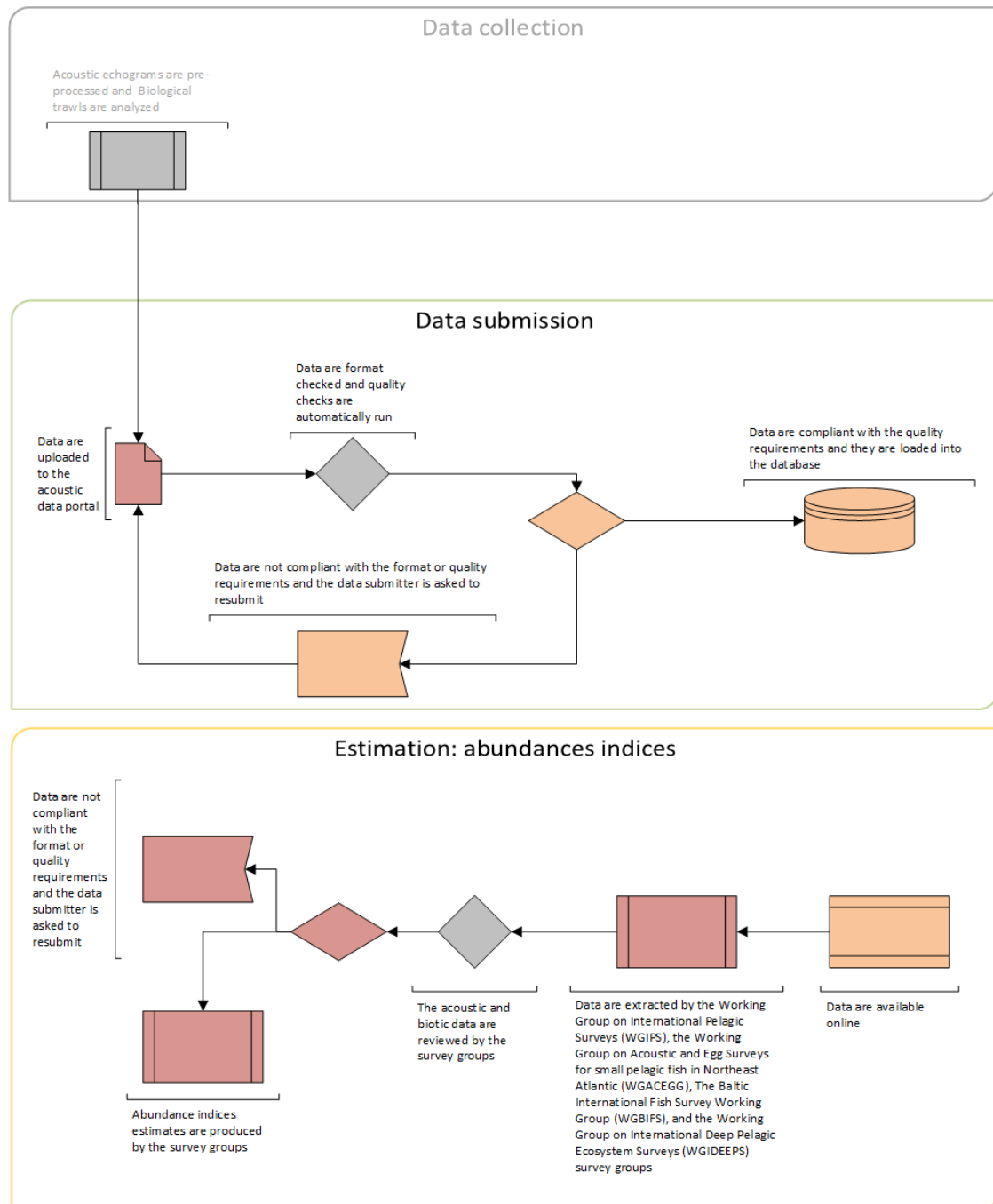
Table 1.3. Recurring advice products using Acoustic data, and corresponding review groups. It is possible that special advice is requested, in which case a temporary review group is formed.

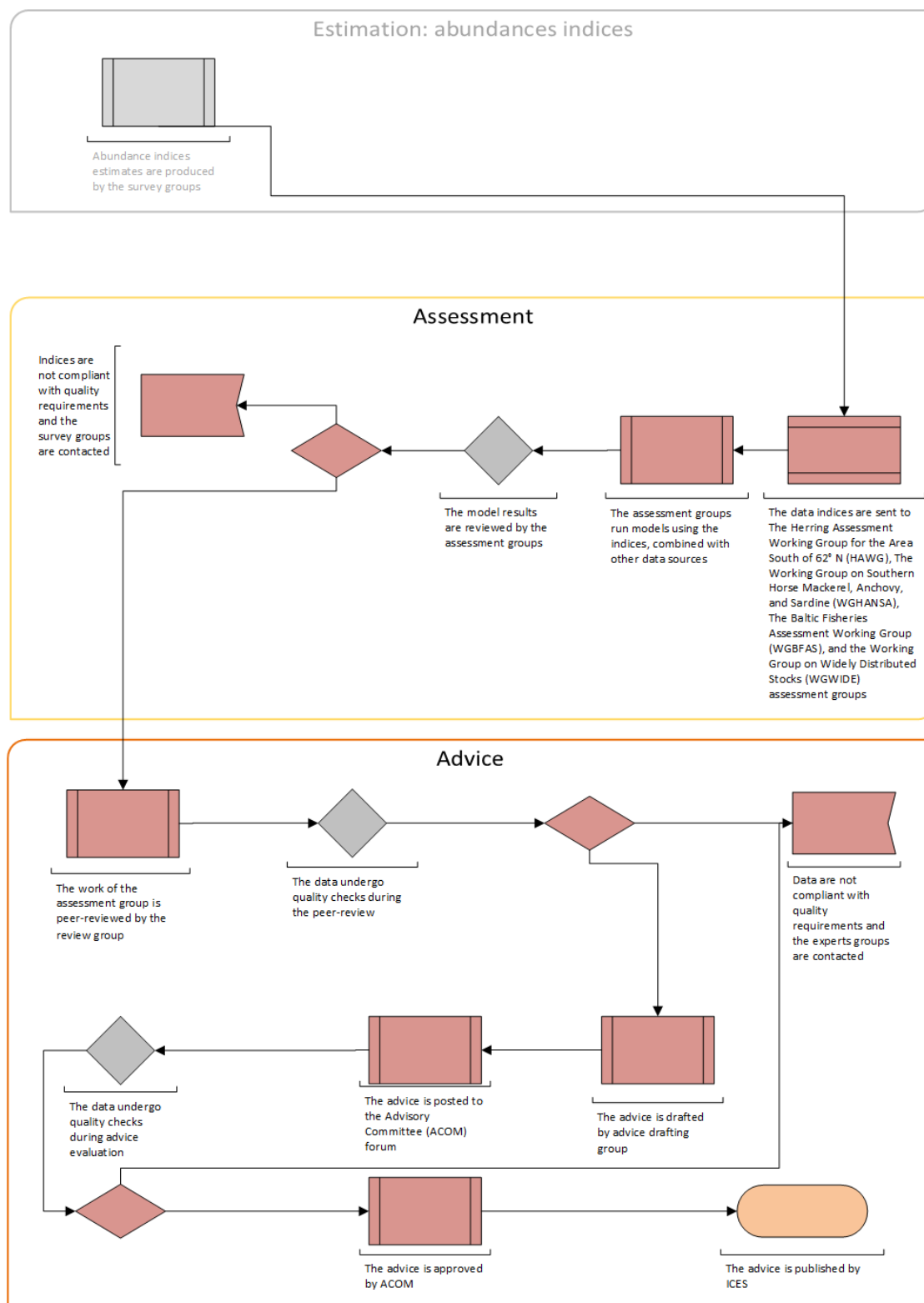
Advice	Review group
Single stock advice	Stock dependent

¹ Working Group on Northeast Atlantic Pelagic Ecosystem Surveys (WGNAPES), succeeded by WGIPS 2011/2012

2 Data flow schematic



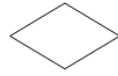




Symbology



Responsibility
of ICES
Secretariat



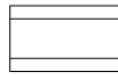
Decision



Communication



Responsibility
of ICES
network



Request



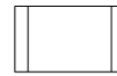
Database



Responsibility
of external
party



Data



Procedure



Start of
workflow



Quality checks



End of
workflow

Version History

Date	Change	Prepared by
August 2023	Initial version created	Joana Ribeiro, ICES

References

- Attribution 4.0 International (CC BY 4.), 2023. Creative Commons, Mountain View, United States of America. <https://creativecommons.org/licenses/by/4.0/>
- ICES Acoustic Trawl Surveys, 2023. ICES, Copenhagen, Denmark. <https://acoustic.ices.dk>
- ICES Data Policy, 2023. ICES, Copenhagen, Denmark. <https://www.ices.dk/data/guidelines-and-policy/Pages/ICES-data-policy.aspx>
- ICES Quality Control Checks, 2023. ICES, Copenhagen, Denmark. <https://www.ices.dk/data/tools/Pages/quality-control.aspx> Dataset: Acoustic surveys
- ICES. 2023. Working Group of International Pelagic Surveys (WGIPS).
- ICES Scientific Reports. 5:74. 122 pp. <https://doi.org/10.17895/ices.pub.23607303>
- Doray, M., Boyra, G., and van der Kooij, J. (Eds.). 2021. ICES Survey Protocols – Manual for acoustic surveys coordinated under ICES Working Group on Acoustic and Egg Surveys for Small Pelagic Fish (WGACEGG). 1st Edition. ICES Techniques in Marine Environmental Sciences Vol. 64. 100 pp. <https://doi.org/10.17895/ices.pub.7462>
- ICES. 2015. Manual for International Pelagic Surveys (IPS). Series of ICES Survey Protocols (SISP) 9. 92 pp. <https://doi.org/10.17895/ices.pub.3519>
- ICES. 2016. SISP 4 - A metadata convention for processed acoustic data from active acoustic systems. Version 10. Series of ICES Survey Protocols. 48 pp. <https://doi.org/10.17895/ices.pub.7434>
- ICES. 2017. Manual for the International Baltic Acoustic Surveys (IBAS). Version 2. Series of ICES Survey Protocols (SISP) 8. 47 pp. <https://doi.org/10.17895/ices.pub.7462>

Author contact information

Joana Ribeiro, joana.ribeiro@ices.dk

International Council for the Exploration of the Sea.

H. C. Andersens Boulevard 44-46, DK 1553 Copenhagen V, Denmark ·

Tel: +45 3338 6700 · Fax: +45 3393 4215