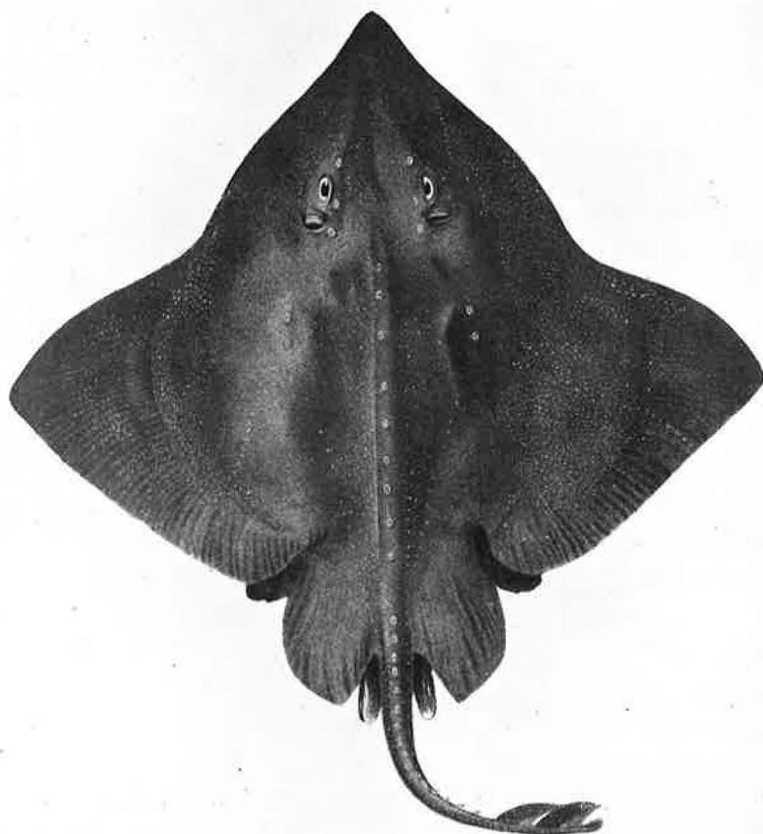


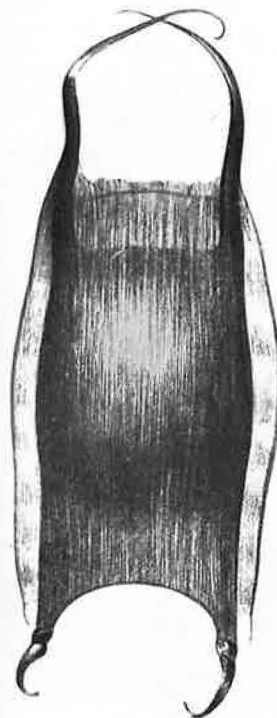
SELACHII
Hypotremata Raiaidæ

Raia hyperborea

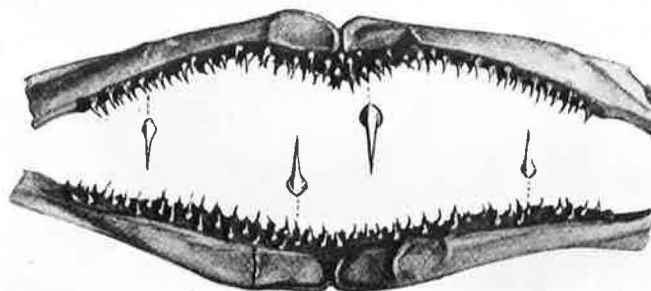
COLLETT 1878



1



2



3

EXPLANATION OF FIGURES.

1. Male from Spitsbergen. Width of disc ca. 404 mm. (after Collett).
2. Egg capsule (after Jensen). Length (without horns) 115 mm. Width 75 mm.
3. Teeth of adult male (after Jensen).

DIAGNOSIS — Maximal observed length 678 mm. and width 505 mm. *Disc.* Length 53 to 58 per cent. and width 71 to 81 per cent. in total length of fish. Anterior margin undulated; outer angle nearly a right angle. *Snout* projects as a pointed process, its length to the middle of the eyes 4.3 to 4.7 times in width of disc and 2 to 2.7 times the interorbital width which is greater than the combined length of eye and spiracle. Length of tail (from anus to tip of caudal) 40 to 48 per cent. in the total length. *Teeth* long and sharp pointed and with small bases; 40 to 44 rows in upper jaw. *Upper surface* of disc studded with spinulae (bases stellate), which are interspersed with large spines. A few medium-sized spines on the rostrum. Orbital ridge with 3 or 4 spines. A median series of 22 to 31 spines to the first dorsal, including praescapular spine and one on the scapula. A group of 3 spines on each side of the shoulder. Tail with a lateral series of small spines for part of its length proximally; the largest spines are ribbed. Colour dark blue-grey or greyish-brown, sometimes with small light or dark rounded spots. *Lower surface* entirely smooth. Colour variegated, white in young. *Egg capsule* resembles very closely that of *R. radiata* but does not show the same arrangement of cross hatching and is much larger. Length of capsule (without horns) ranges from 81 to 125 mm. and greatest breadth from 54 to 77 mm.

DISTRIBUTION — A boreal deep water species inhabiting cold water, about 0° C., from 260 to 2394 metres (Lutken). S. and W. Greenland; Faroe Channel (cold water area); E. Iceland; N. of Faroes; S. of Jan Mayen; W. Spitsbergen; W. of Romsdal; Barents Sea (cold area).

SYNONYMY — *R. borea* Garman 1913.

LITERATURE

1878. — COLLETT, R. *Forh. vid. Selsk. Christiania*. No. 13.
 1887. — GÜNTHER, A. Report on the Deep Sea Fishes. *Challenger Report. Zool.* Vol. XXII.
 1898. — LUTKEN, CHR. Ichthyolog. Results of the Ingolf Expedition. *Danish Ingolf Exped.* Vol. 2.
 1897. — SMITT, F.A. Scandinavian Fishes.
 1911. — BERG, L.S. Faune de la Russie et des Pays limitrophes. *Poissons*, Vol. 1.
 1914. — JENSEN, AD. S. Selachians of Greenland. *Mindes. Japetus Steenstrup*. XXX. *Kobenhavn*.
 1922. — THIELEMANN, M. Die Fische. *Wissensch. Meersunters. Abt. Helgoland, N. F.* Band XIII. Heft. 2.

R. S. CLARK — 1930.